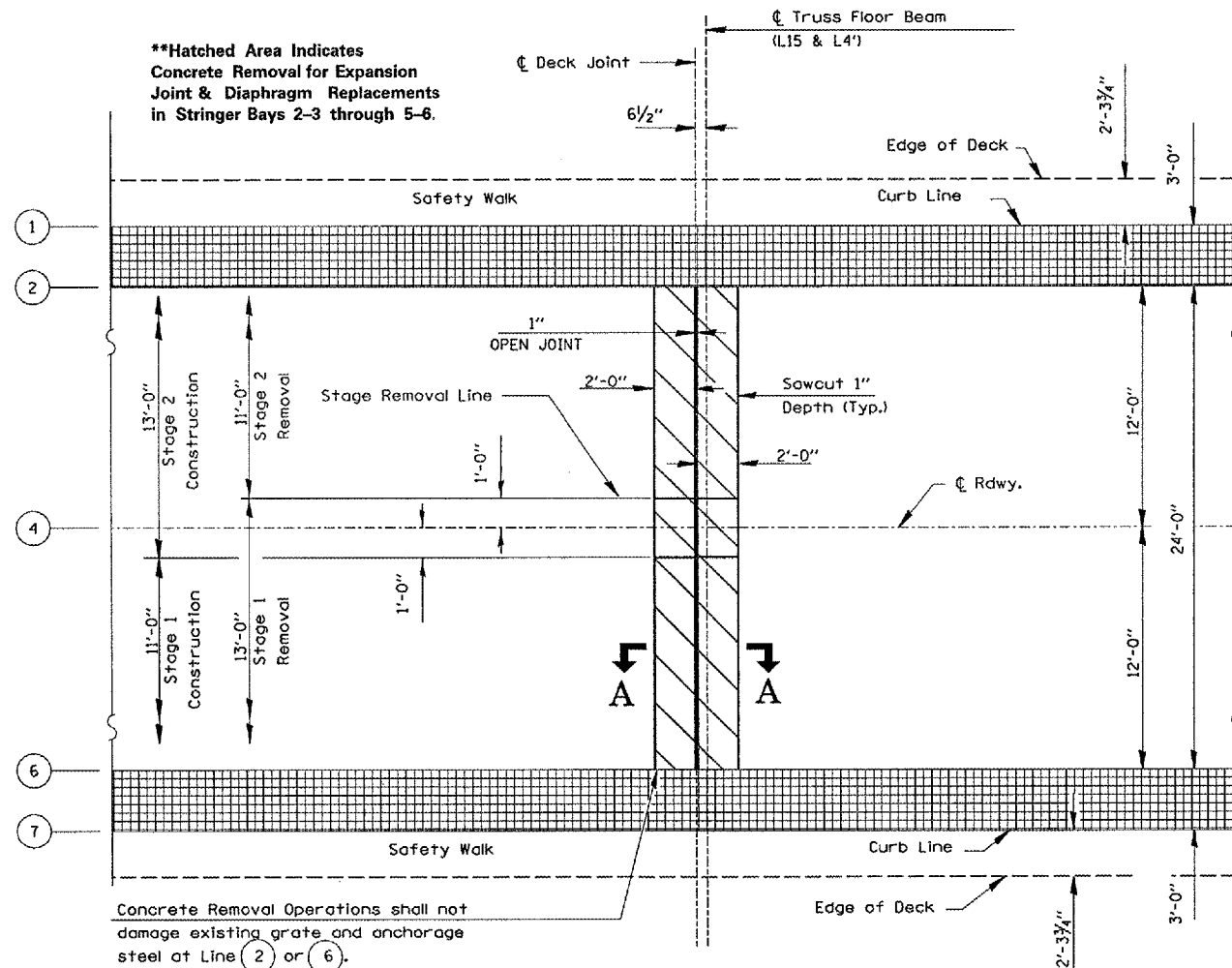


F.A.S. RTE.	SECTION	COUNTY	TOTAL SHEETS	SHEET NO.
1279	1(D,E,F,P)I-3	LASALLE	19	8
STA. 23+51		TO STA. 35+09		
FED. ROAD DIST. NO. -		ILLINOIS NON-FED. AID PROJECT		



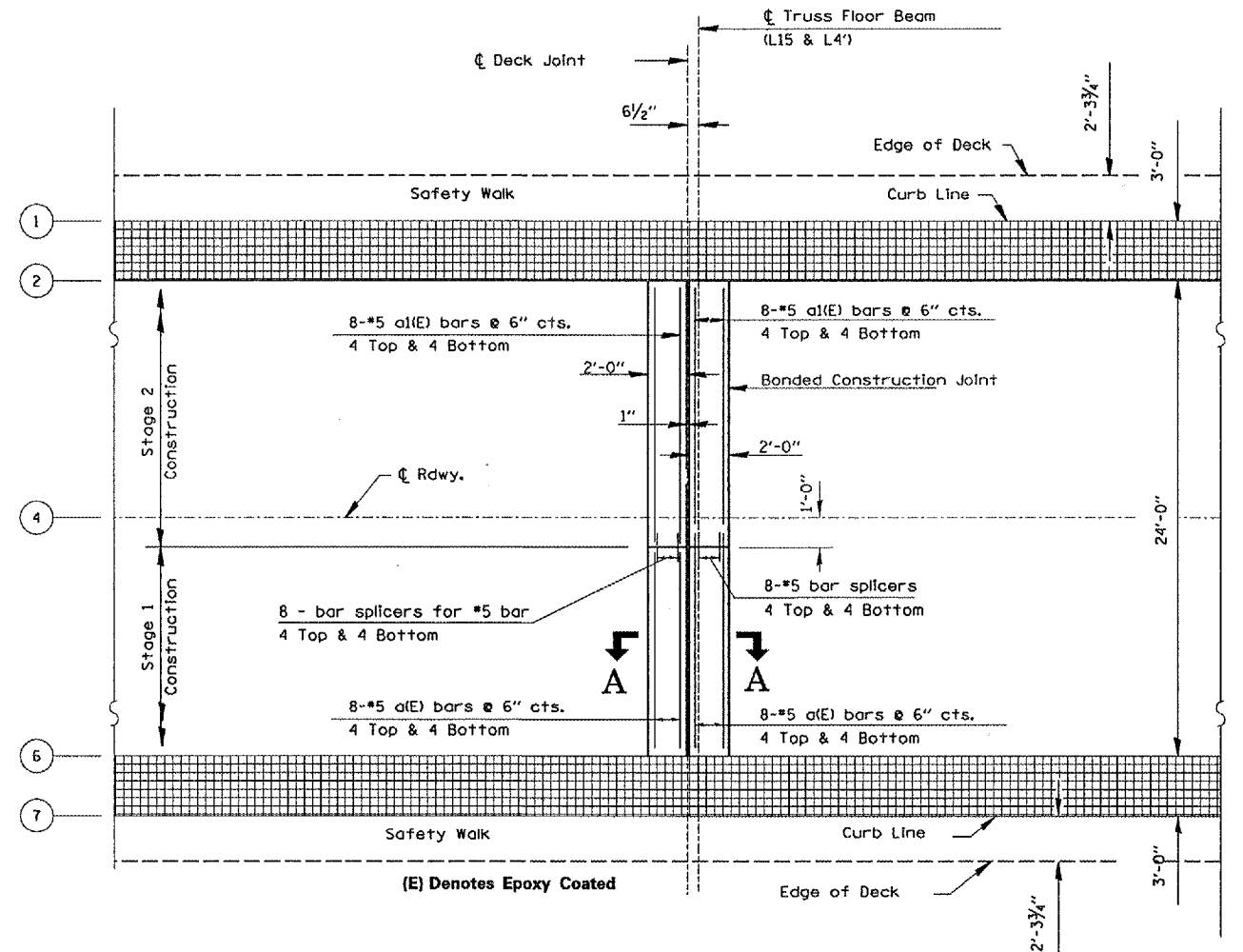
****Hatched Area Indicates Concrete Removal for Expansion Joint & Diaphragm Replacements in Stringer Bays 2-3 through 5-6.**



Concrete Removal Operations shall not damage existing grate and anchorage steel at Line (2) or (6).

EXISTING DECK PLAN

Truss Spans @ L15 & L4'



(E) Denotes Epoxy Coated

PROPOSED DECK PLAN

Truss Spans @ L15 & L4'

BILL OF MATERIAL

BAR	NO.	SIZE	LENGTH	SHAPE
a(E)	32	#5	10'-8"	—
a1(E)	32	#5	12'-8"	—
Concrete Removal				Cu. Yd. 4.3
Reinforcement Bars, Epoxy Coated				Pound 779
Bar Splicers				Each 32
Concrete Superstructure				Cu. Yd. 4.3
Silicone Joint Sealer, 1"				Foot 120
Polymer Concrete				Cu. Ft. 3.5

SEE SHEET 9 FOR SECTIONS A-A

REVISIONS	
NAME	DATE

ILLINOIS DEPARTMENT OF TRANSPORTATION
**JOINT RECONSTRUCTION
 DETAILS @ L15 & L4'**
 EXISTING S.N. 050-0088
 IL 178 OVER ILLINOIS RIVER
 STATION 29+30

SCALE: VERT. HORIZ. DATE 12/08/04 DRAWN BY RLW CHECKED BY

cmaln05/cm326/details.dgn