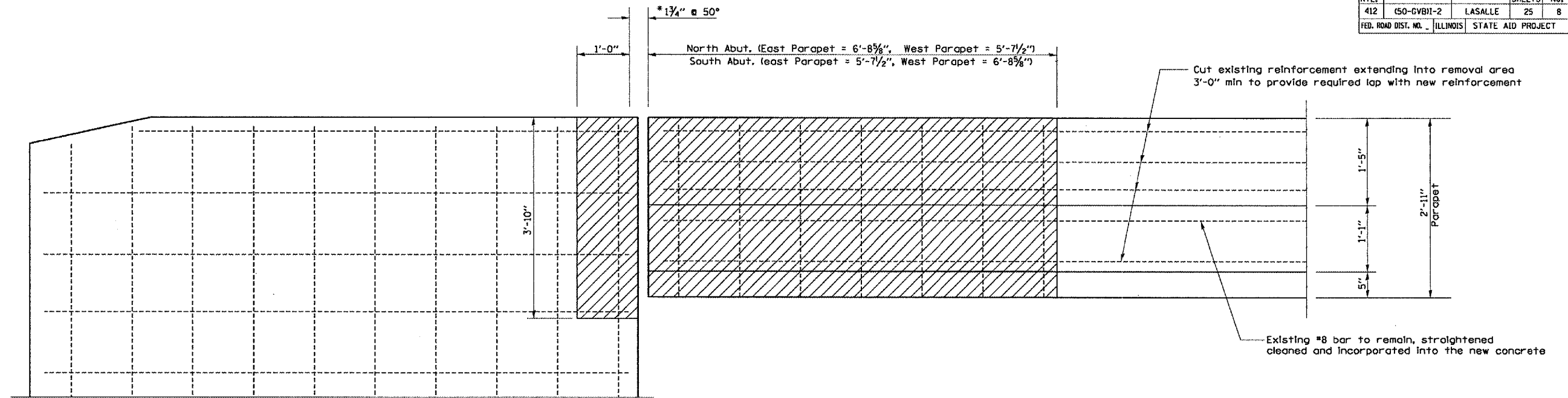
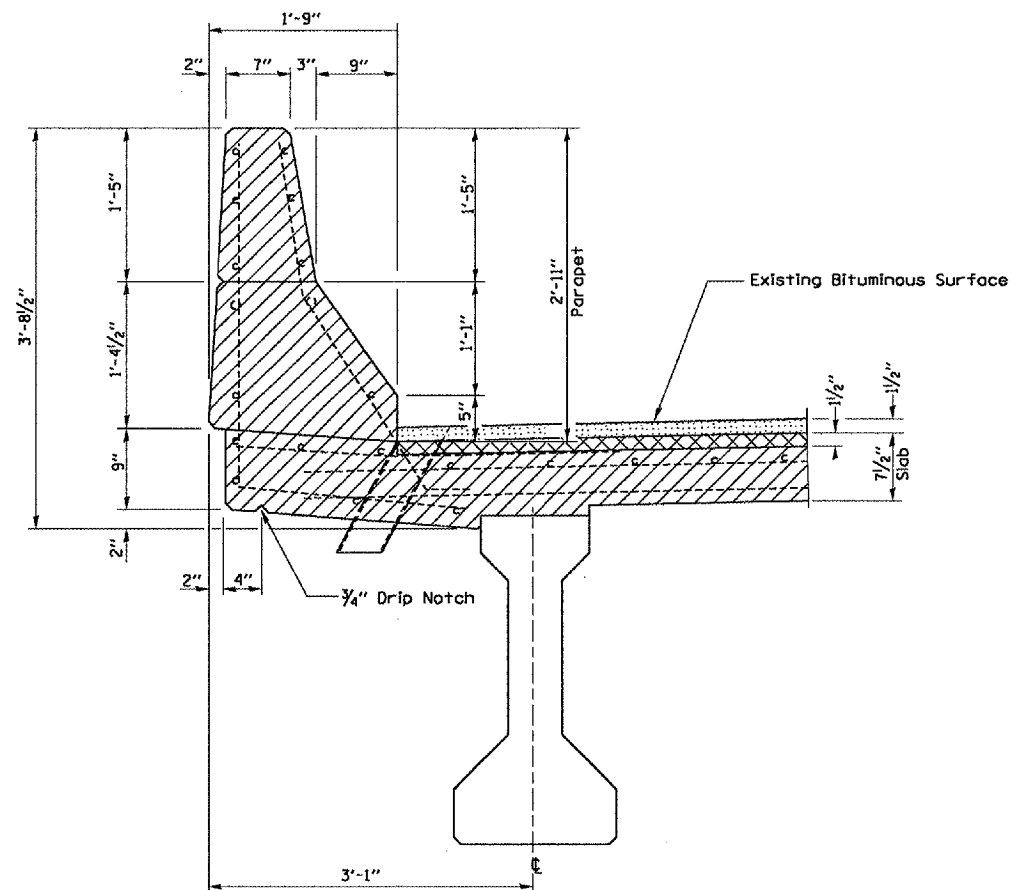


F.A.I. RTE.	SECTION	COUNTY	TOTAL SHEETS	SHEET NO.
412	(50-6VB)I-2	LASALLE	25	8
FED. ROAD DIST. NO. ILLINOIS		STATE AID PROJECT		



**ELEVATION AT PARAPET**



**SECTION AT PARAPET**

MARCH 21, 2005  
C:\PROJECTS\CMA\06\CM301\DETAILS.DGN

REVISIONS		ILLINOIS DEPARTMENT OF TRANSPORTATION <b>CONCRETE REMOVAL AT PARAPET</b> S.N. 050-0168 (NB) F.A.I. 412 OVER C. & N.W. RAILROAD SECTION (50-6VB)I-1 STA. 1429+12.74
NAME	DATE	