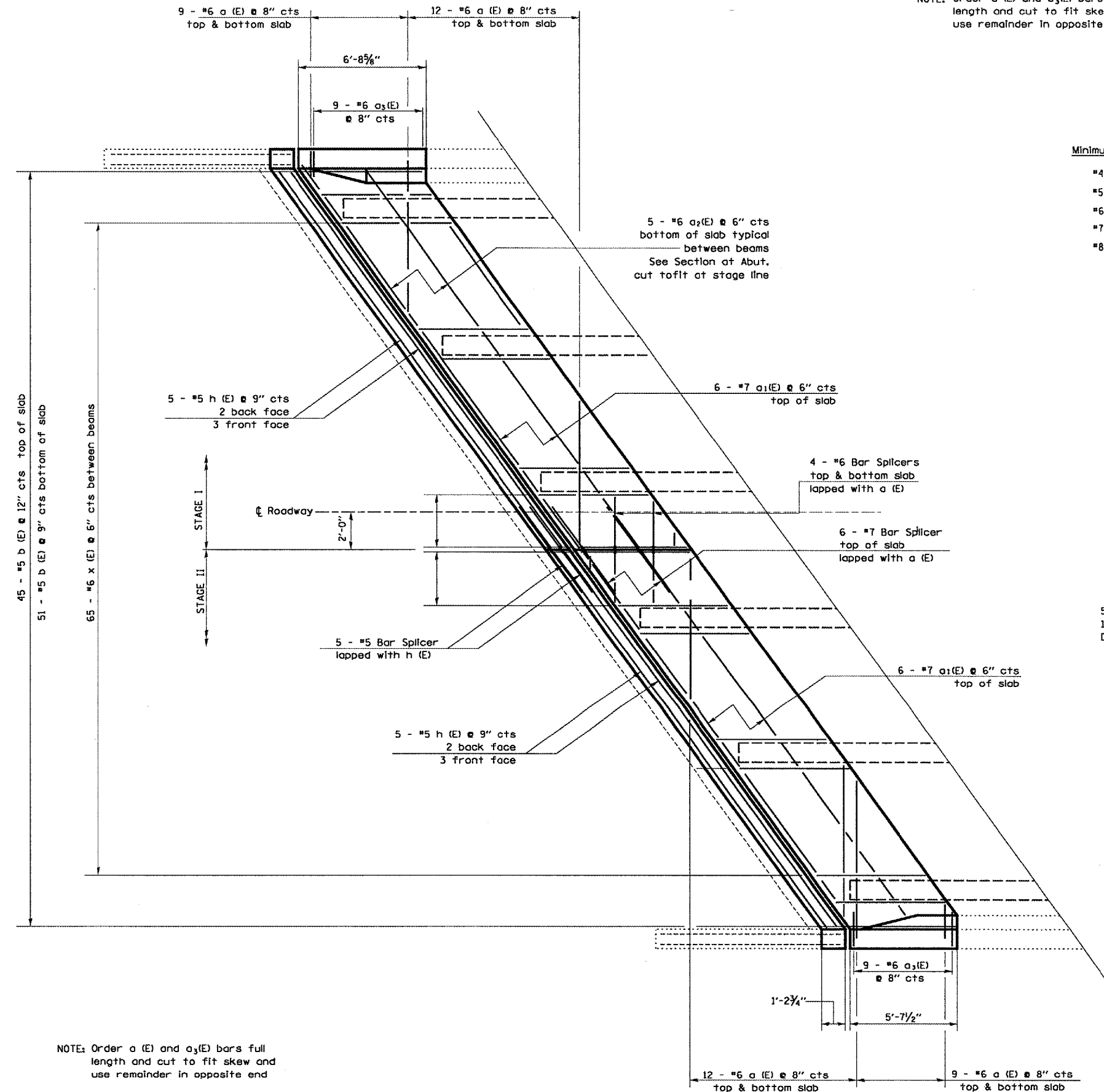


F.A.I. RTE.	SECTION	COUNTY	TOTAL SHEETS	SHEET NO.
412	(50-6VB)I-2	LASALLE	25	11
FED. ROAD DIST. NO.		ILLINOIS	STATE AID PROJECT	

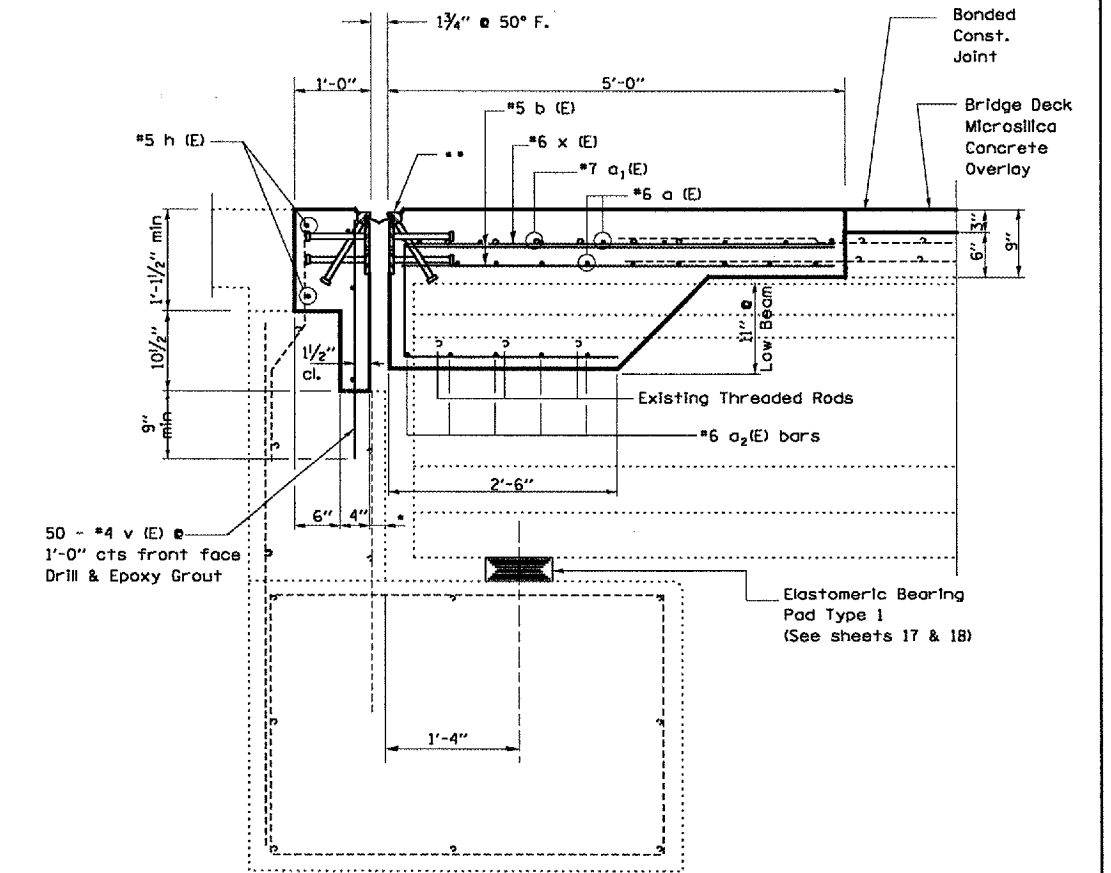
NOTE: Order a (E) and a<sub>3</sub>(E) bars full length and cut to fit skew and use remainder in opposite end



**Minimum Bar Lap**

- #4 1'-8"
- #5 2'-0"
- #6 2'-7"
- #7 3'-5"
- #8 4'-6"

\*\* Strip Seal Expansion Joint Assembly (See sheet 16 of 25)



**ABUTMENT SECTION**

@ RT <'S

NOTE: Order a (E) and a<sub>3</sub>(E) bars full length and cut to fit skew and use remainder in opposite end

REVISIONS	
NAME	DATE

ILLINOIS DEPARTMENT OF TRANSPORTATION  
**CONCRETE CONSTRUCTION**  
**SOUTH ABUTMENT**  
 S.N. 050-0168 (NB)  
 F.A.I. 412 OVER C. & N.W. RAILROAD  
 SECTION (50-6VB)I-1  
 STA. 1429+12.74

MARCH 21, 2005 C:\PROJECTS\CMA\NO6\CM301\DETAILS.DGN