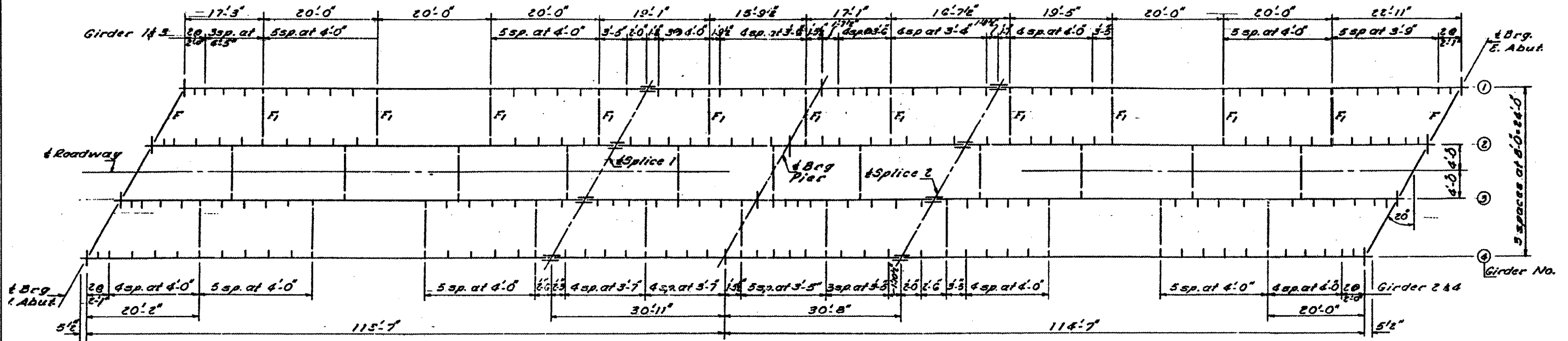
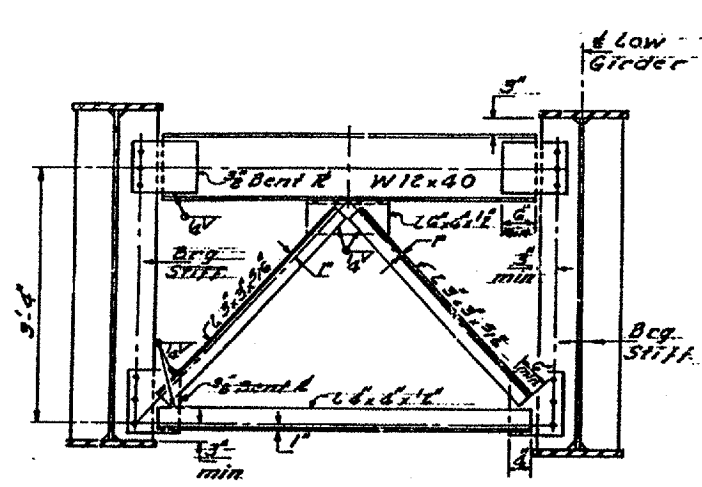


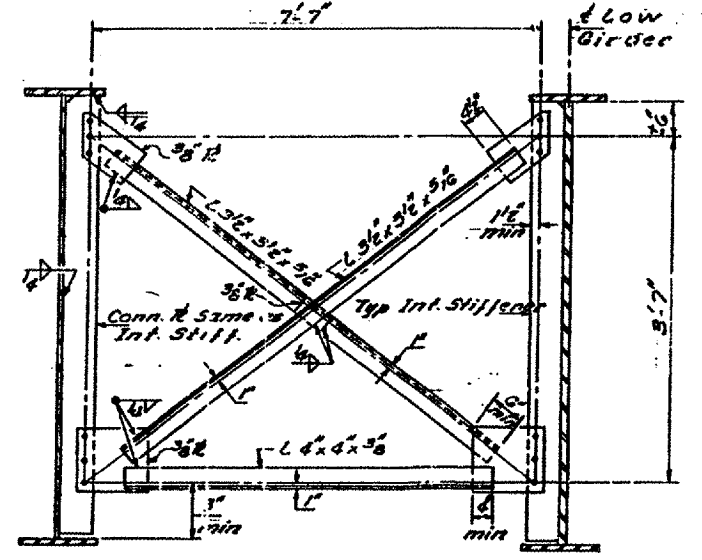
ROUTES	SECTION	COUNTY	TOTAL SHEETS	SHEET NO.
FAI 55 & FAP 673	D-3 BRIDGE PAINTING 2005-2	LIVINGSTON	17	8
ILLINOIS				



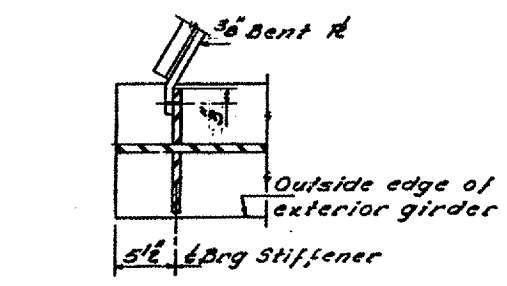
PLAN



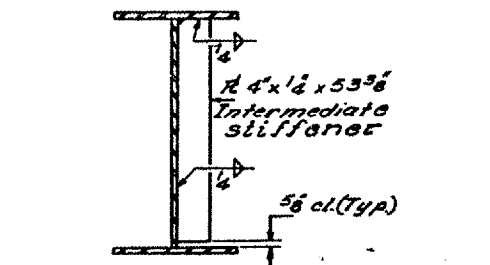
TYR END CROSS FRAME F
(No. Req'd 6)



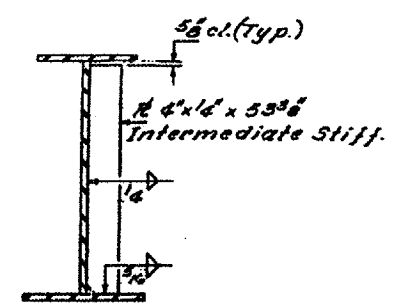
TYR INTERIOR CROSS FRAME F1
(No. Req'd 33)



CROSS FRAME CONNECTION DETAILS AT ABUTMENTS



INTERMEDIATE STIFFENER DETAIL BETWEEN SPLICE AND ABUTMENT



INTERMEDIATE STIFFENER DETAIL BETWEEN SPLICES

REVISIONS	
NAME	DATE

ILLINOIS DEPARTMENT OF TRANSPORTATION
EXISTING STRUCTURE
LOCATION #1
S.N. 053-0135

FOR INFORMATION ONLY

Date: 03/23/05
 C:\projects\bridgepoint05\bp2005-2\details.dgn