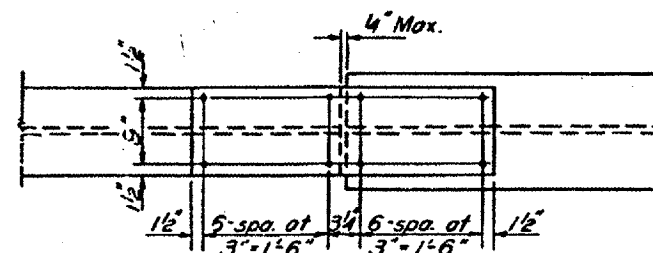
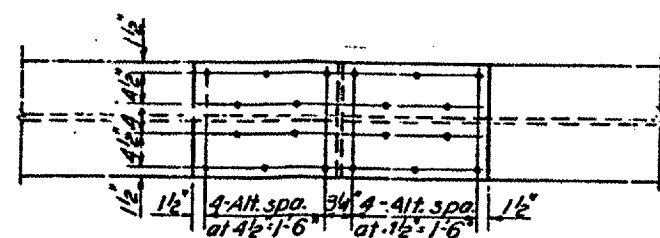
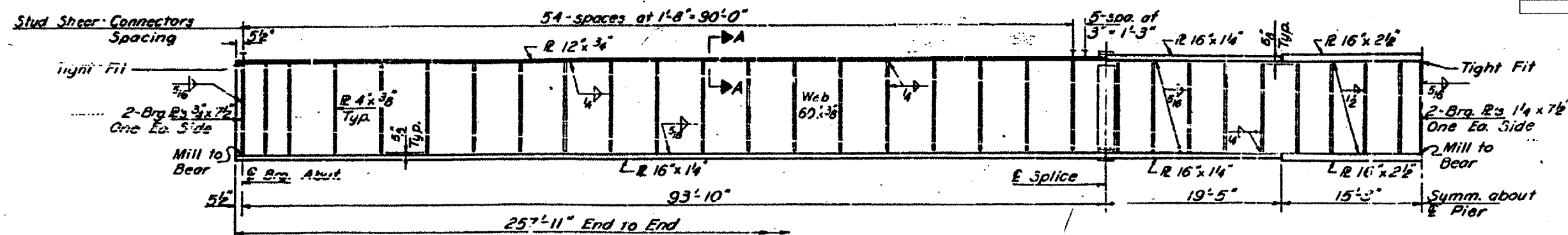
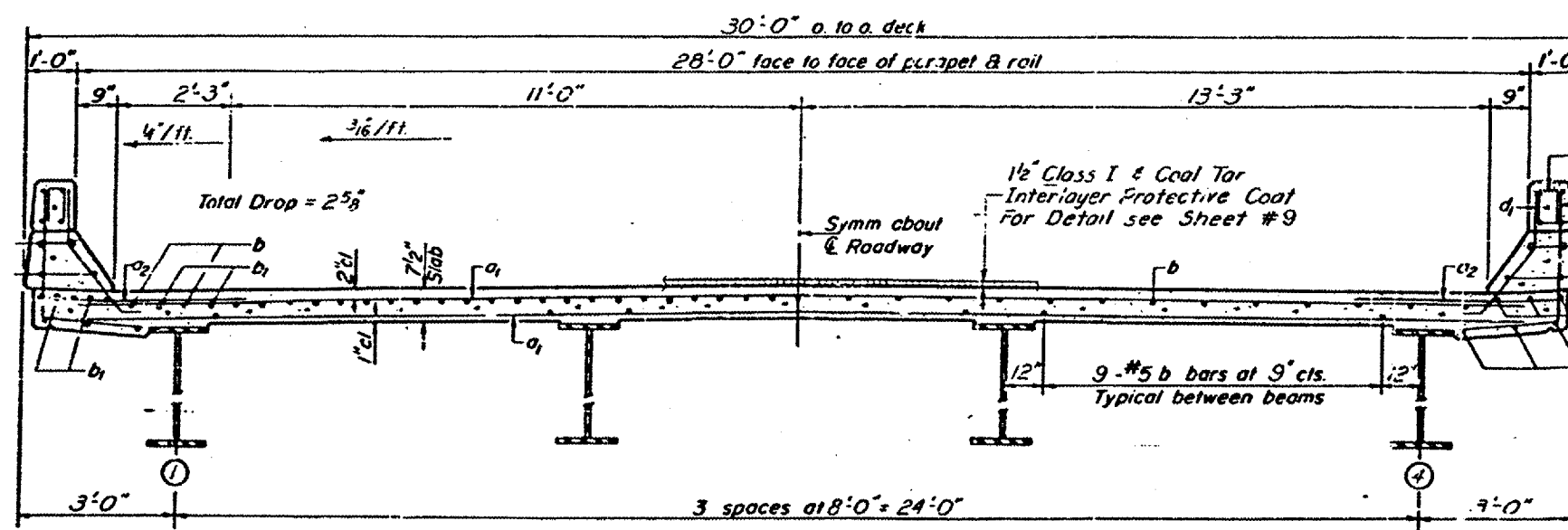
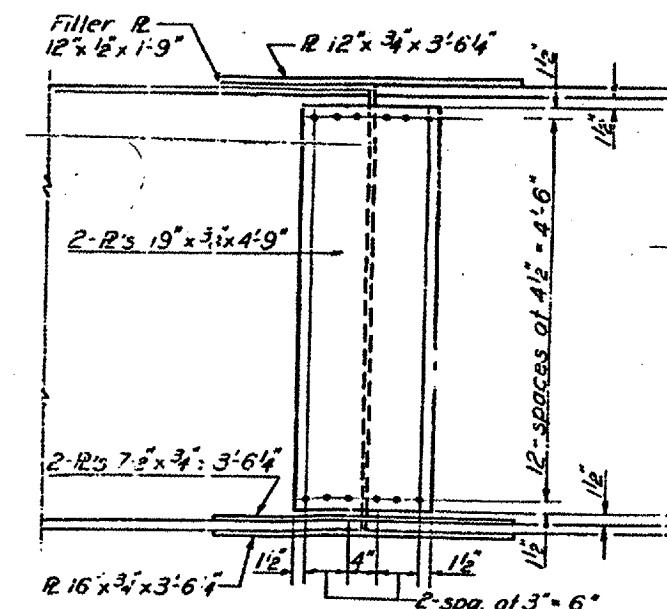


ROUTES	SECTION	COUNTY	TOTAL SHEETS	SHEET NO.
FAI 55 & FAP 673	D-3 BRIDGE PAINTING 2005-2	LIVINGSTON	17	11
ILLINOIS				



SPLICE 1 & 2



REVISIONS	
NAME	DATE

ILLINOIS DEPARTMENT OF TRANSPORTATION
EXISTING STRUCTURE
LOCATION #2
S.N. 053-0130

FOR INFORMATION ONLY

Date: 03/23/05
 c:\projects\brldgepaint\05\bp005-2\details.dgn