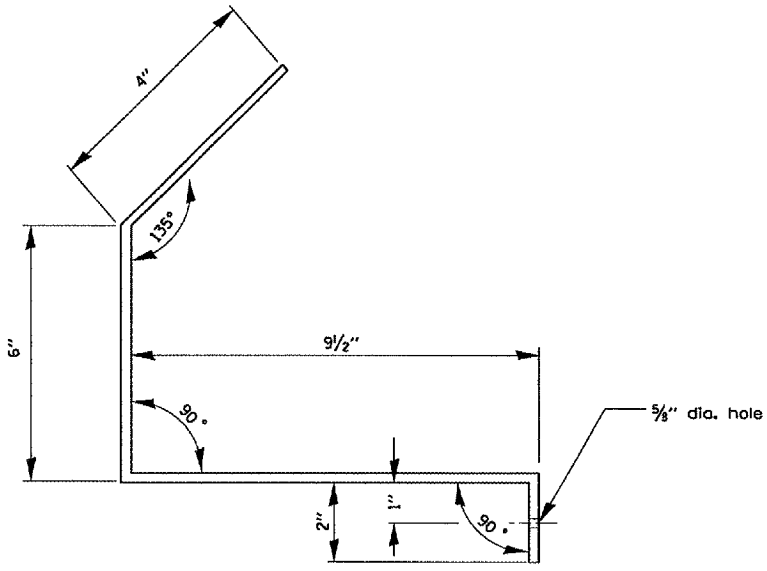
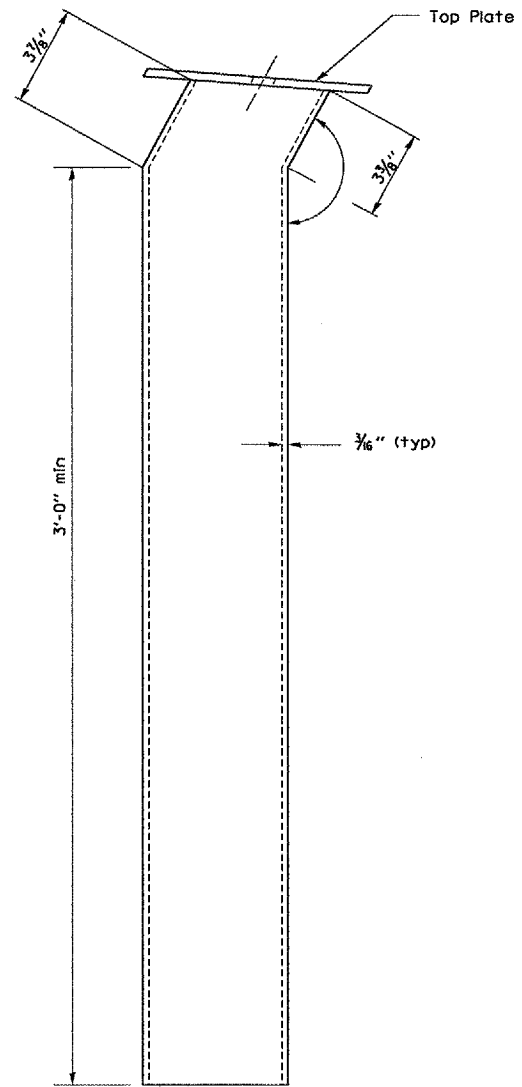
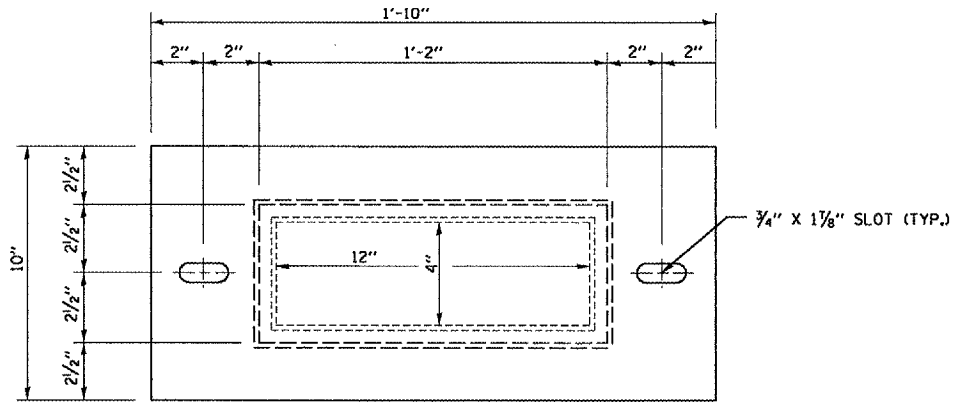
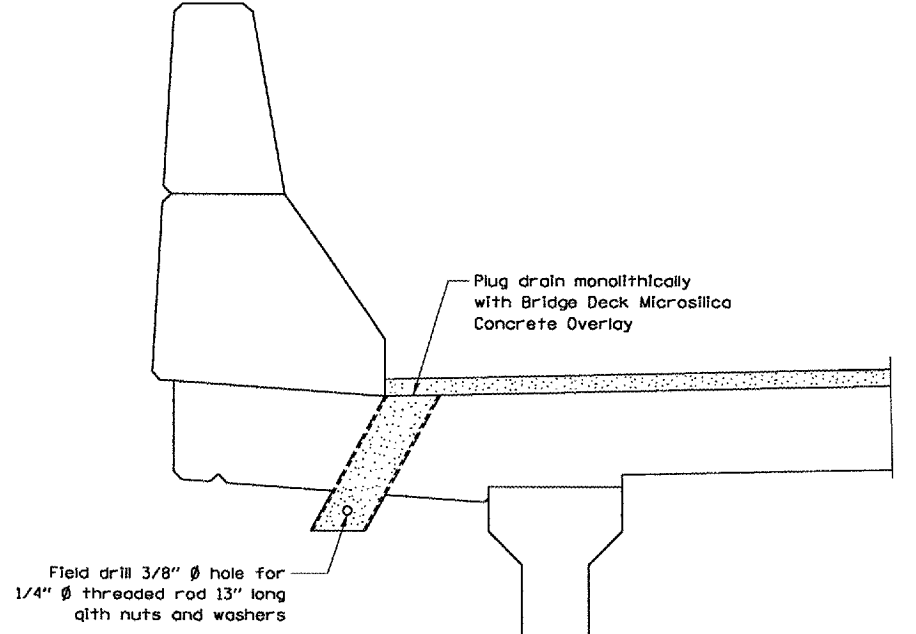
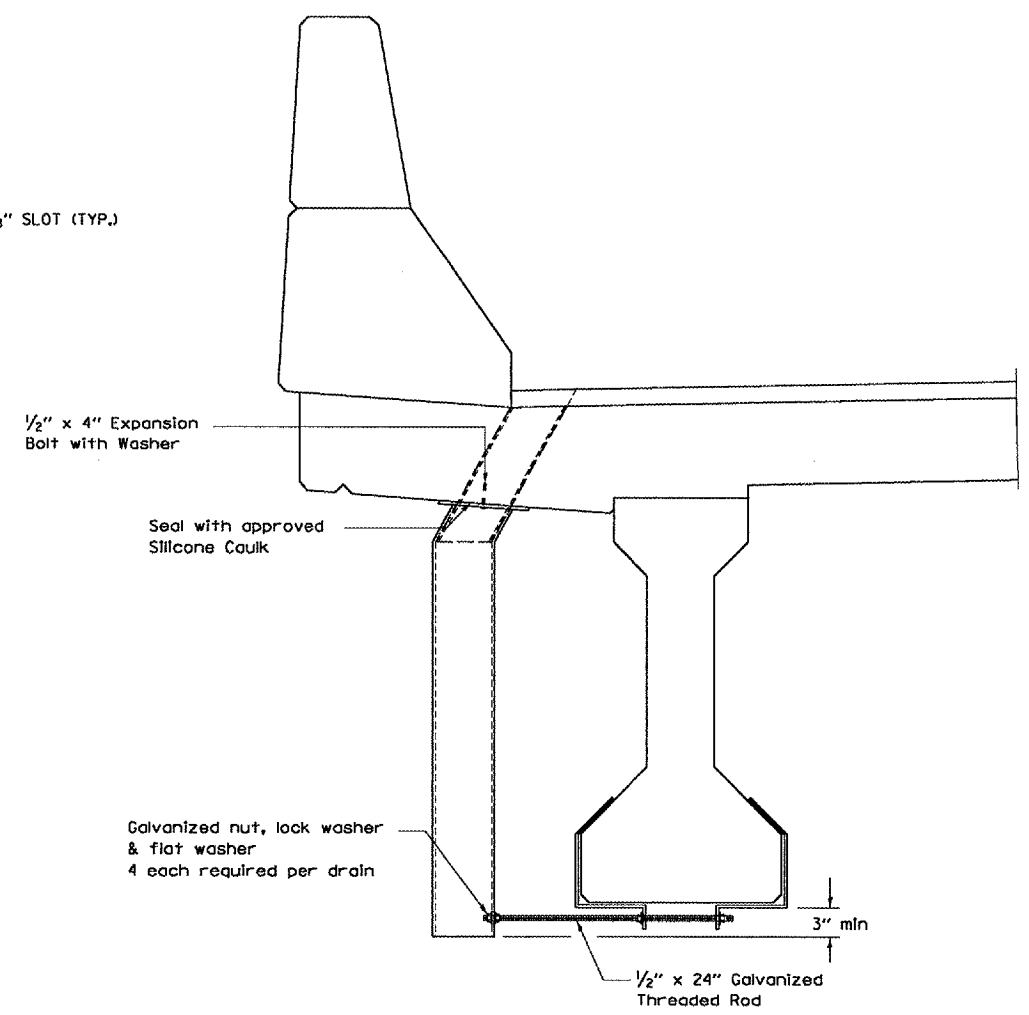


| F.A.I. RTE. | SECTION | COUNTY | TOTAL SHEETS | SHEET NO. |
|---------------------|-------------|----------|-------------------|-----------|
| 412 | (50-GVB)I-1 | LASALLE | 25 | 19 |
| FED. ROAD DIST. NO. | | ILLINOIS | STATE AID PROJECT | |



DECK DRAIN EXTENSION



PLUG DECK DRAIN

* DATE: MARCH 06, 2005
 * DGN: CM05/CM327/DETAILS.DGN

| REVISIONS | |
|-----------|------|
| NAME | DATE |
| | |
| | |
| | |
| | |
| | |
| | |
| | |
| | |
| | |
| | |

ILLINOIS DEPARTMENT OF TRANSPORTATION
DECK DRAIN DETAILS
 S.N. 050-0167 (SB)
 F.A.I. 412 OVER C. & N.W. RAILROAD
 SECTION (50-GVB)I-1
 STA. 1429+12.74