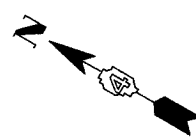
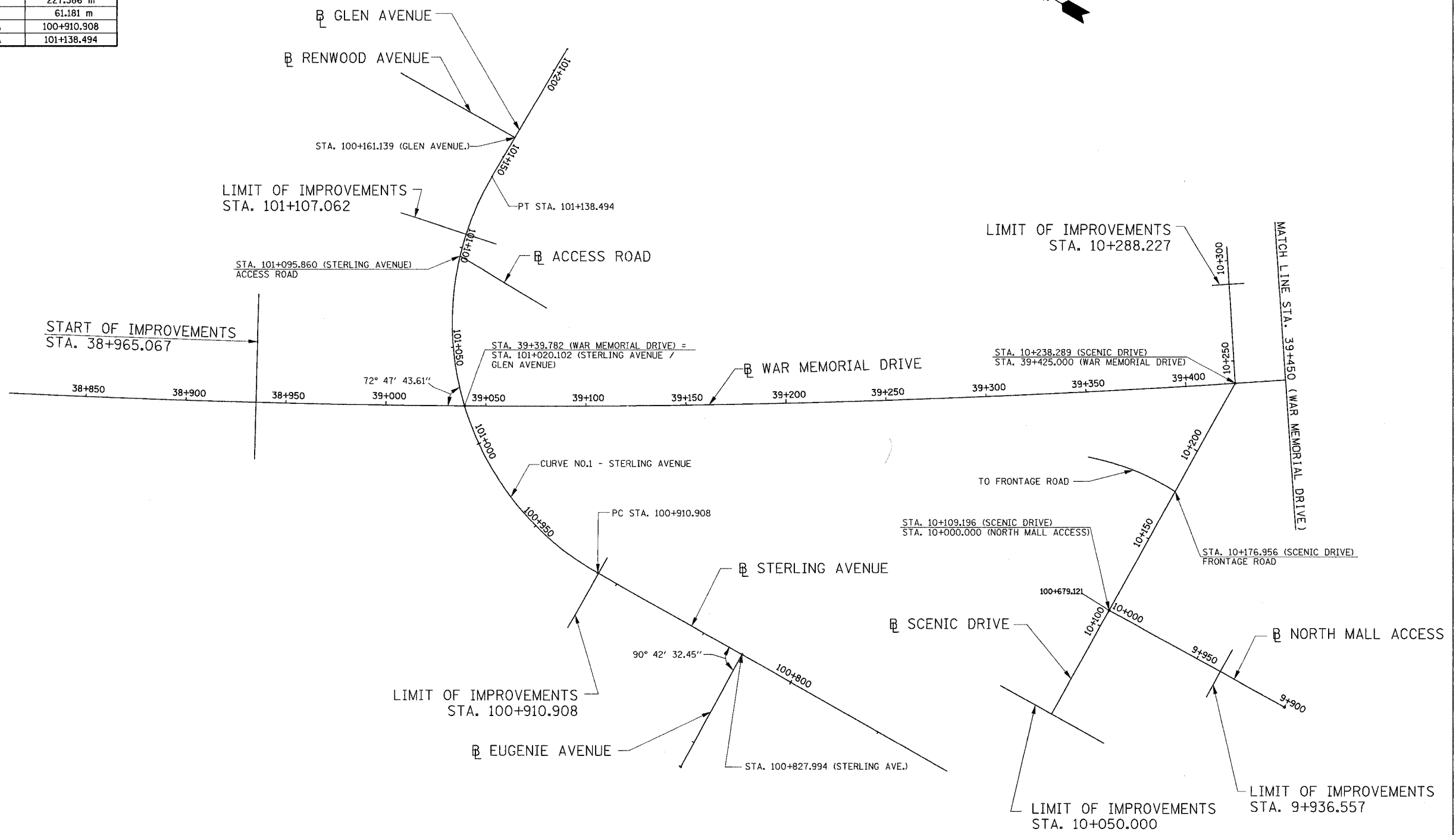


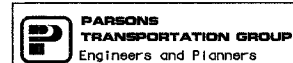
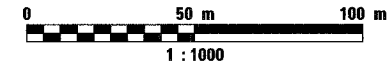
STERLING AVENUE

PROPOSED CURVE DATA	
P.I. STA	101+056.754
R	143.245 m
T	145.845 m
L	227.586 m
E	61.181 m
P.C. STA	100+910.908
P.T. STA	101+138.494

F.A. RTE.	SECTION	COUNTY	TOTAL SHEETS	SHEET NO.
74	(72-7)R-3	PEORIA	1360	115
STA. 38+965.067		TO STA. 39+450.000		
FED. ROAD DIST. NO.		ILLINOIS FED. AID PROJECT		



LIMIT OF IMPROVEMENTS
STA. 100+910.908



REVISIONS	
NAME	DATE

ILLINOIS DEPARTMENT OF TRANSPORTATION
SCHEMATIC DRAWING
 WAR MEMORIAL DRIVE
 STA. 38+965.067 TO STA. 39+450
 DATE 11/12/04
 DRAWN BY CADD
 CHECKED BY KJW