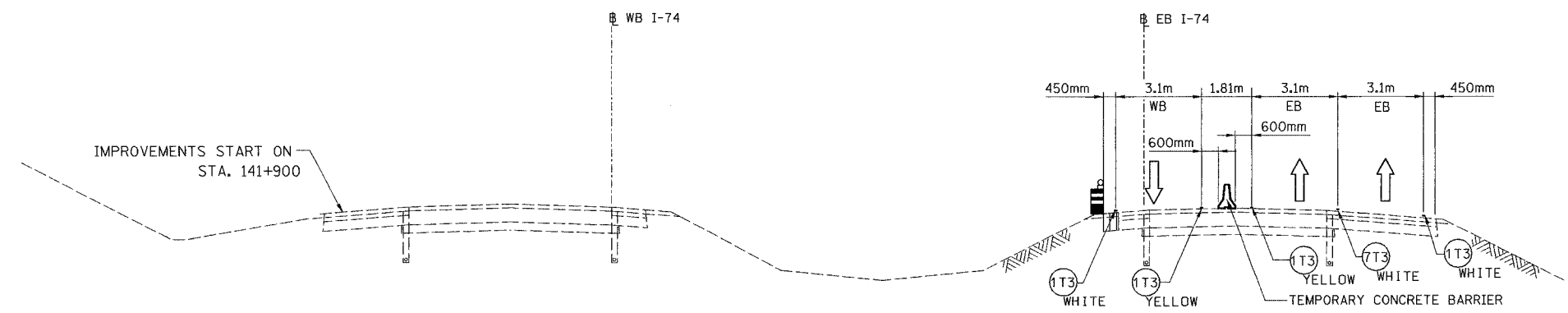


F.A. RTE.	SECTION	COUNTY	TOTAL SHEETS	SHEET NO.
74	(72-7)R-3	PEORIA	1360	121
STA.		TO STA.		
FED. ROAD DIST. NO.		ILLINOIS	FED. AID PROJECT	



TYPICAL SECTION-01  
FAI ROUTE 74  
STA. 141+650 TO STA. 142+200 WB

Note:  
Existing temporary pavement along both outside and inside roadway shoulders between Sta. 141+450.00 to Sta. 141+900.00

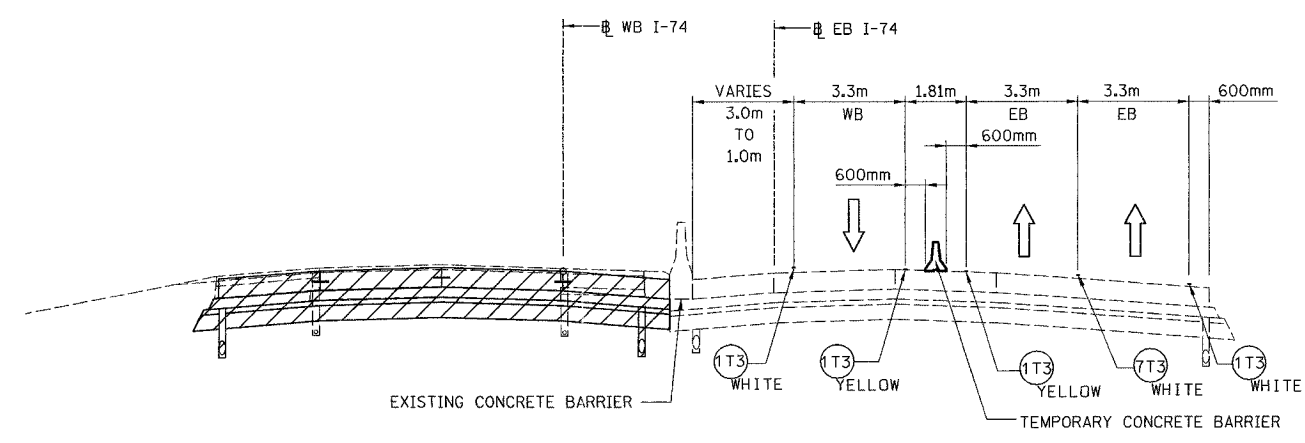
LEGEND

- TEMPORARY PAVEMENT
- CONSTRUCTION THIS STAGE
- CONSTRUCTION IN PROCEEDING STAGES
- DIRECTION OF TRAFFIC
- PLASTIC DRUM LIGHTED WITH STEADY BURNING MONODIRECTIONAL LIGHT AT 15.0m O.C. (TYP)
- TEMPORARY CONCRETE BARRIER

TEMPORARY PAVEMENT MARKING TAPE, TYPE III

- 100 mm SOLID
- 100 mm SOLID, WET
- 100 mm SKIP DASH

Note:  
Outside EB lane exits to Ramp A-1 at Sta. 142+326.000 (not shown).



TYPICAL SECTION-02  
FAI ROUTE 74  
STA. 142+200 WB TO 142+326 WB

REVISIONS	
NAME	DATE

ILLINOIS DEPARTMENT OF TRANSPORTATION  
MOT TYPICAL SECTIONS  
FAI ROUTE 74 (I-74) (WB)  
STAGE 3-1  
SCALE N.T.S. DRAWN BY CADD  
DATE 11/12/04 CHECKED BY KJW

