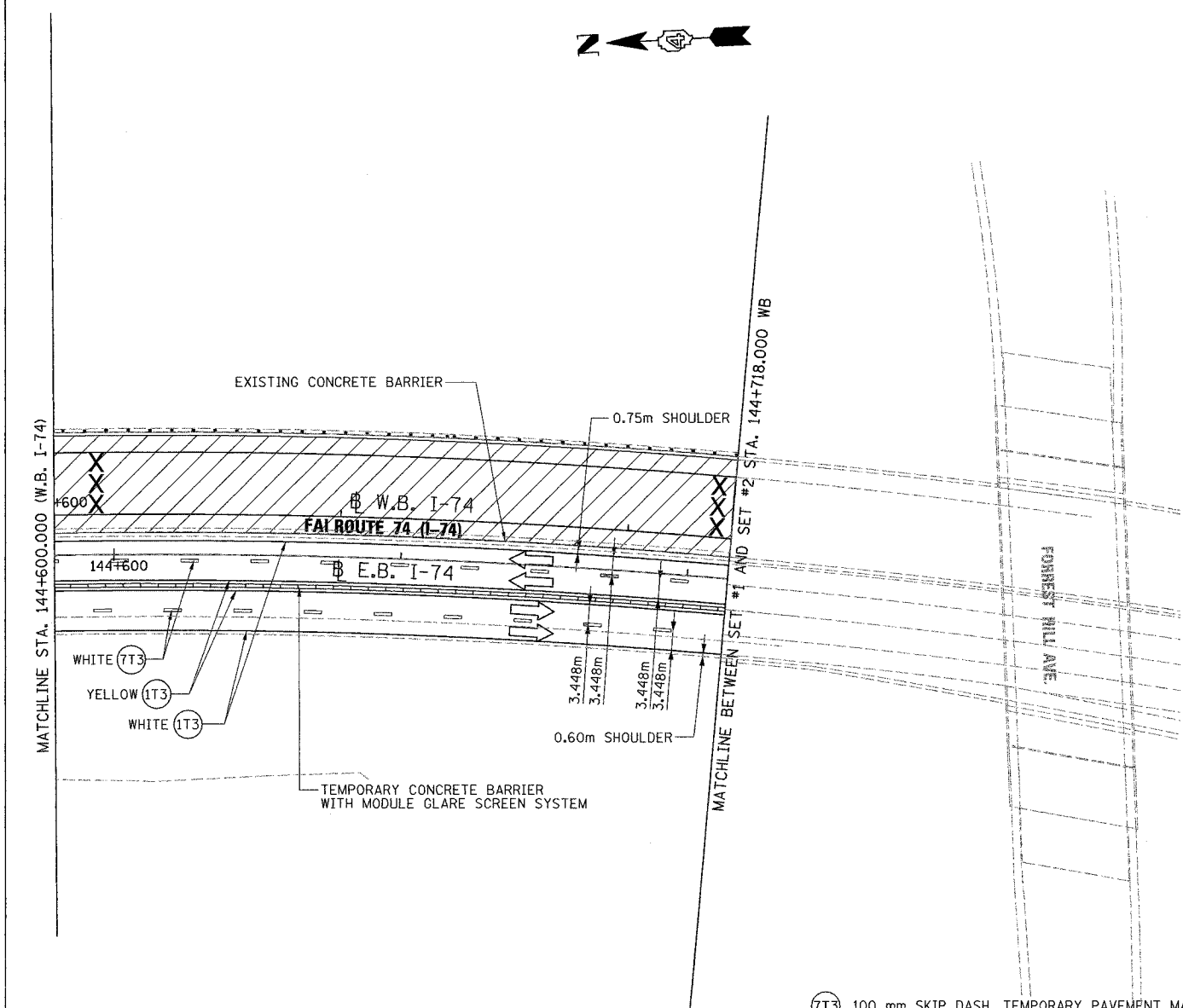


F.A. RTE.	SECTION	COUNTY	TOTAL SHEETS	SHEET NO.
74	(72-7)R-3	PEORIA	1360	138
STA. 144+600.000 TO STA. 144+718.000			ILLINOIS FED. AID PROJECT	



LEGEND

	CONSTRUCTED THIS STAGE		TYPE III BARRICADE WITH FLASHING LIGHTS (ROAD CLOSED)
	TEMPORARY PAVEMENT		SIGN
	DIRECTION OF TRAFFIC		LANE(S) CLOSED
	TEMPORARY CONCRETE BARRIER		PLASTIC DRUM

PAVEMENT MARKING LEGEND

- (1X) 100 (4) SOLID
- (2X) 150 (6) SOLID
- (3X) 200 (8) SOLID
- (4X) 300 (12) SOLID
- (5X) 600 (24) SOLID
- (6X) 100 (4) DOUBLE SOLID
- (7X) 100 (4) SKIP DASH
- (8X) 150 (6) SKIP DASH
- (9X) 200 (8) SKIP DASH
- (10X) 200 (8) DOTTED
- (11X) LETTERS AND ARROWS

RAISED REFLECTIVE PAVEMENT MARKERS

- 1 ◀ ONE-WAY CRYSTAL MARKER AT 24.38 m(80') CENTERS
- 2 ◀ ONE-WAY CRYSTAL MARKER AT 12.19 m(40') CENTERS
- 3 ◀ ONE-WAY CRYSTAL MARKER AT 6.10 m(20') CENTERS
- 4 ◀ ONE-WAY AMBER MARKER AT 12.19 m(40') CENTERS
- 5 ◆ TWO-WAY AMBER MARKER AT 12.19 m(40') CENTERS FOR SPEEDS LESS THAN 45 MPH
- 6 ◆ TWO-WAY AMBER MARKER AT 24.38 m(80') CENTERS FOR SPEEDS GREATER THAN 45 MPH

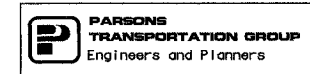
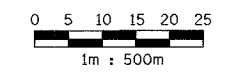
WHERE "X" DESIGNATES:
 E = EPOXY
 P = PAINT
 T = THERMOPLASTIC
 TP= TEMPORARY PAVEMENT MARKING TAPE
 T3= PAVEMENT MARKING TAPE, TYPE III
 W3= WET TEMPORARY PAVEMENT MARKING TAPE, TYPE III

All dimensions are in millimeters (inches) unless otherwise shown.

- (7T3) 100 mm SKIP DASH, TEMPORARY PAVEMENT MARKING TAPE (WHITE)
 WB RT STA. 144+600 TO STA. 144+718
 WB RT STA. 144+600 TO STA. 144+718
- (1T3) 100 mm SOLID, TEMPORARY PAVEMENT MARKING TAPE (WHITE)
 WB RT STA. 144+600 TO STA. 144+718
 WB RT STA. 144+600 TO STA. 144+718
- (1Y3) 100 mm SOLID, TEMPORARY PAVEMENT MARKING TAPE (YELLOW)
 WB RT STA. 144+600 TO STA. 144+718
 WB RT STA. 144+600 TO STA. 144+718

NOTES:

1. REMOVE EXISTING TEMPORARY CONCRETE BARRIERS DURING THIS STAGE - LT STA 144+100 TO LT STA 144+718
2. OUTSIDE SHOULDER ALONG WB TRAFFIC NARROWS TO 0.60 METERS AT LOCATIONS OF EXISTING LIGHT POLE LOCATIONS.



REVISIONS	
NAME	DATE

ILLINOIS DEPARTMENT OF TRANSPORTATION
 MAINTENANCE OF TRAFFIC
 FAI ROUTE 74 (I-74 WB)
 STAGE 3-1
 STA. 144+600.000 - STA. 144+718.000
 DATE 11/12/04
 DRAWN BY CADD
 CHECKED BY KJW