

F.A. RTE.	SECTION	COUNTY	TOTAL SHEETS	SHEET NO.
74	(72-7)R-3	PEORIA	1360	155
STA. 142+300.000 TO STA. 142+650.000			ILLINOIS FED. AID PROJECT	

PAVEMENT MARKING LEGEND

- (1X) 100 (4) SOLID
- (2X) 150 (6) SOLID
- (3X) 200 (8) SOLID
- (4X) 300 (12) SOLID
- (5X) 600 (24) SOLID
- (6X) 100 (4) DOUBLE SOLID
- (7X) 100 (4) SKIP DASH
- (8X) 150 (6) SKIP DASH
- (9X) 200 (8) SKIP DASH
- (10X) 200 (8) DOTTED
- (11X) LETTERS AND ARROWS

RAISED REFLECTIVE PAVEMENT MARKERS

- 1 ONE-WAY CRYSTAL MARKER AT 24.38 m(80') CENTERS
- 2 ONE-WAY CRYSTAL MARKER AT 12.19 m(40') CENTERS
- 3 ONE-WAY CRYSTAL MARKER AT 6.10 m(20') CENTERS
- 4 ONE-WAY AMBER MARKER AT 12.19 m(40') CENTERS
- 5 TWO-WAY AMBER MARKER AT 12.19 m(40') CENTERS FOR SPEEDS LESS THAN 45 MPH
- 6 TWO-WAY AMBER MARKER AT 24.38 m(80') CENTERS FOR SPEEDS GREATER THAN 45 MPH

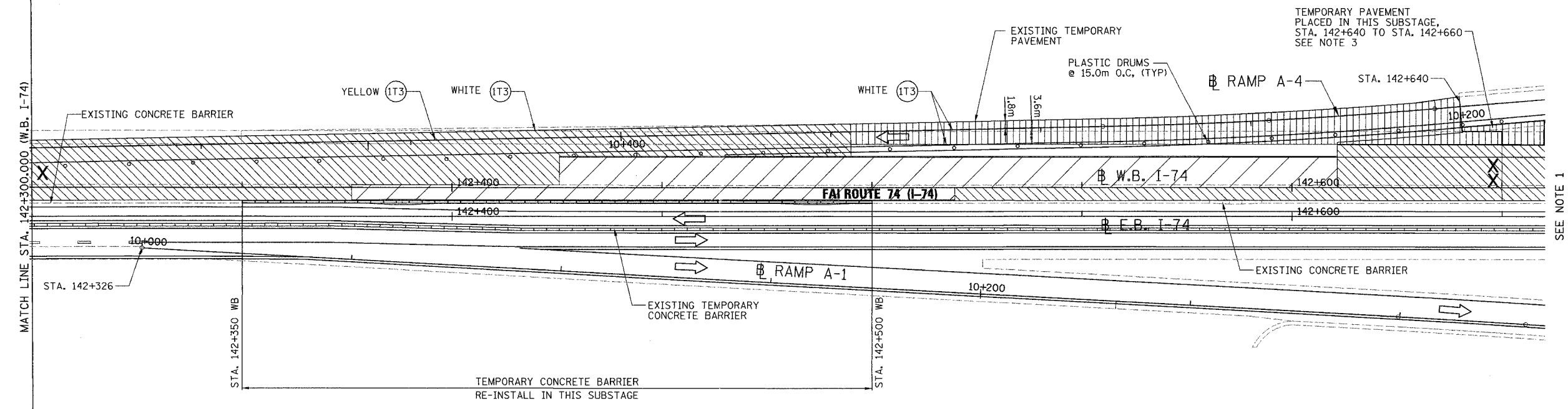
WHERE "X" DESIGNATES:
E = EPOXY
P = PAINT
T = THERMOPLASTIC
TP= TEMPORARY PAVEMENT MARKING TAPE
T3= PAVEMENT MARKING TAPE, TYPE III

— WHITE
— YELLOW

All dimensions are in millimeters (Inches) unless otherwise shown.

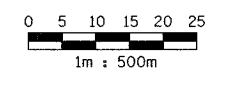
LEGEND

	CONSTRUCTED THIS STAGE		TYPE III BARRICADE WITH FLASHING LIGHTS (ROAD CLOSED)
	CONSTRUCTED IN PRECEDING STAGES		SIGN
	TEMPORARY PAVEMENT		LANE(S) CLOSED
	DIRECTION OF TRAFFIC		
	TEMPORARY CONCRETE BARRIER		
	PLASTIC DRUM		



- (1T3) 100 mm SOLID, PAVEMENT MARKING TAPE, TYPE III (WHITE)
WB LT STA. 142+300 TO STA. 142+640
- (1T3) 100 mm SOLID, PAVEMENT MARKING TAPE, TYPE III (YELLOW)
WB LT STA. 142+300 TO STA. 142+640

- NOTE:**
1. MOT FOR THIS SUBSTAGE BEYOND STA.142+660 SIMILAR TO PREVIOUS STAGE.
 2. STRIPING ON EB PAVEMENT PLACED IN PREVIOUS STAGE.
 3. PLACE TEMPORARY PAVEMENT TO MATCH INTO RAMP A-4 AND WB OUTSIDE SHOULDER FOR USE IN NEXT SUBSTAGE



PARSONS TRANSPORTATION GROUP
Engineers and Planners

REVISIONS	
NAME	DATE

ILLINOIS DEPARTMENT OF TRANSPORTATION
MAINTENANCE OF TRAFFIC
FAI ROUTE 74 (I-74 WB)
STAGE 3-2; SUBSTAGE 1
STA. 142+300.000 - STA. 142+650.000

DATE 11/12/04
DRAWN BY CADD
CHECKED BY KJW