

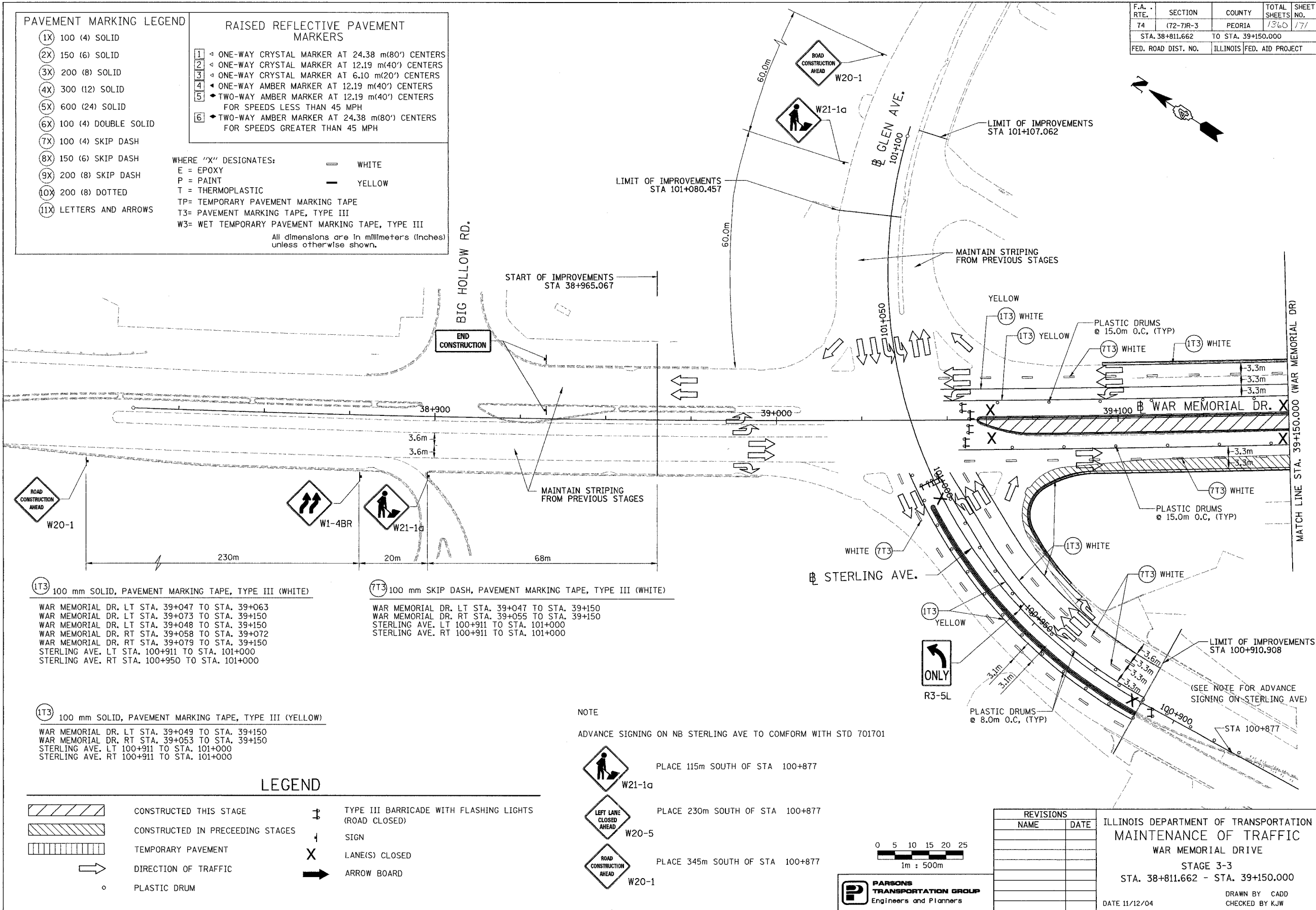
F.A. RTE.	SECTION	COUNTY	TOTAL SHEETS NO.	SHEET NO.
74	(72-77R-3)	PEORIA	1360	177
STA. 38+811.662		TO STA. 39+150.000		
FED. ROAD DIST. NO.		ILLINOIS FED. AID PROJECT		

PAVEMENT MARKING LEGEND		RAISED REFLECTIVE PAVEMENT MARKERS	
(1X)	100 (4) SOLID	1	ONE-WAY CRYSTAL MARKER AT 24.38 m(80') CENTERS
(2X)	150 (6) SOLID	2	ONE-WAY CRYSTAL MARKER AT 12.19 m(40') CENTERS
(3X)	200 (8) SOLID	3	ONE-WAY CRYSTAL MARKER AT 6.10 m(20') CENTERS
(4X)	300 (12) SOLID	4	ONE-WAY AMBER MARKER AT 12.19 m(40') CENTERS
(5X)	600 (24) SOLID	5	TWO-WAY AMBER MARKER AT 12.19 m(40') CENTERS FOR SPEEDS LESS THAN 45 MPH
(6X)	100 (4) DOUBLE SOLID	6	TWO-WAY AMBER MARKER AT 24.38 m(80') CENTERS FOR SPEEDS GREATER THAN 45 MPH
(7X)	100 (4) SKIP DASH		
(8X)	150 (6) SKIP DASH		
(9X)	200 (8) SKIP DASH		
(10X)	200 (8) DOTTED		
(11X)	LETTERS AND ARROWS		

WHERE "X" DESIGNATES:
 E = EPOXY
 P = PAINT
 T = THERMOPLASTIC
 TP= TEMPORARY PAVEMENT MARKING TAPE
 T3= PAVEMENT MARKING TAPE, TYPE III
 W3= WET TEMPORARY PAVEMENT MARKING TAPE, TYPE III

— WHITE
 — YELLOW

All dimensions are in millimeters (Inches) unless otherwise shown.



(1T3) 100 mm SOLID, PAVEMENT MARKING TAPE, TYPE III (WHITE)
 WAR MEMORIAL DR. LT STA. 39+047 TO STA. 39+063
 WAR MEMORIAL DR. LT STA. 39+073 TO STA. 39+150
 WAR MEMORIAL DR. LT STA. 39+048 TO STA. 39+150
 WAR MEMORIAL DR. RT STA. 39+058 TO STA. 39+072
 WAR MEMORIAL DR. RT STA. 39+079 TO STA. 39+150
 STERLING AVE. LT STA. 100+911 TO STA. 101+000
 STERLING AVE. RT STA. 100+950 TO STA. 101+000

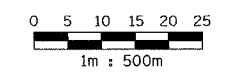
(7T3) 100 mm SKIP DASH, PAVEMENT MARKING TAPE, TYPE III (WHITE)
 WAR MEMORIAL DR. LT STA. 39+047 TO STA. 39+150
 WAR MEMORIAL DR. RT STA. 39+055 TO STA. 39+150
 STERLING AVE. LT 100+911 TO STA. 101+000
 STERLING AVE. RT 100+911 TO STA. 101+000

(1T3) 100 mm SOLID, PAVEMENT MARKING TAPE, TYPE III (YELLOW)
 WAR MEMORIAL DR. LT STA. 39+049 TO STA. 39+150
 WAR MEMORIAL DR. RT STA. 39+053 TO STA. 39+150
 STERLING AVE. LT 100+911 TO STA. 101+000
 STERLING AVE. RT 100+911 TO STA. 101+000

NOTE
 ADVANCE SIGNING ON NB STERLING AVE TO COMFORM WITH STD 701701

- PLACE 115m SOUTH OF STA 100+877
- PLACE 230m SOUTH OF STA 100+877
- PLACE 345m SOUTH OF STA 100+877

LEGEND	
	CONSTRUCTED THIS STAGE
	CONSTRUCTED IN PRECEEDING STAGES
	TEMPORARY PAVEMENT
	DIRECTION OF TRAFFIC
	PLASTIC DRUM
	TYPE III BARRICADE WITH FLASHING LIGHTS (ROAD CLOSED)
	SIGN
	LANE(S) CLOSED
	ARROW BOARD



PARSONS TRANSPORTATION GROUP
 Engineers and Planners

REVISIONS	
NAME	DATE

ILLINOIS DEPARTMENT OF TRANSPORTATION
 MAINTENANCE OF TRAFFIC
 WAR MEMORIAL DRIVE
 STAGE 3-3
 STA. 38+811.662 - STA. 39+150.000
 DATE 11/12/04
 DRAWN BY CADD
 CHECKED BY KJW