

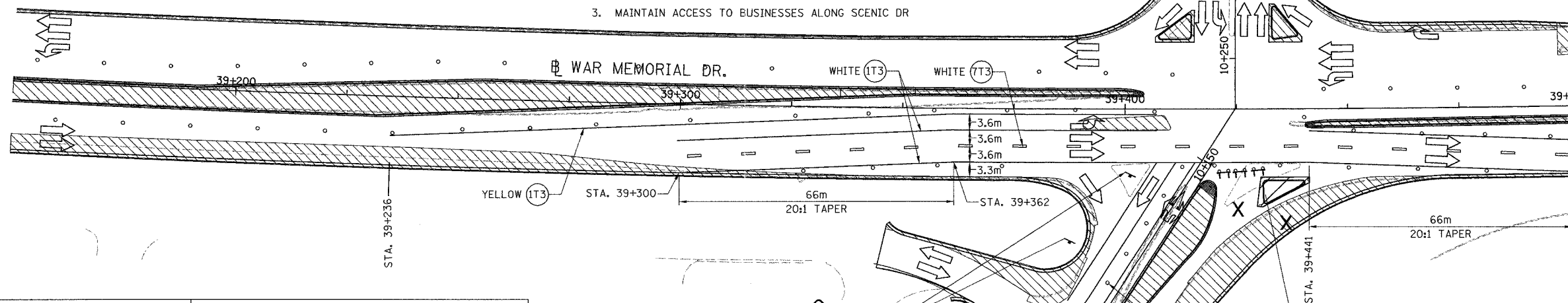
| | | | | |
|---------------------|-----------|---------------------------|--------------|-----------|
| F.A. RTE. | SECTION | COUNTY | TOTAL SHEETS | SHEET NO. |
| 74 | (72-7)R-3 | PEORIA | 1360 | 173 |
| STA. 39+150.000 | | TO STA. 39+500.000 | | |
| FED. ROAD DIST. NO. | | ILLINOIS FED. AID PROJECT | | |

LEGEND

- | | | | |
|--|---------------------------------|--|---|
| | CONSTRUCTED THIS STAGE | | TYPE III BARRICADE WITH FLASHING LIGHTS (ROAD CLOSED) |
| | CONSTRUCTED IN PRECEDING STAGES | | SIGN |
| | TEMPORARY PAVEMENT | | LANE(S) CLOSED |
| | DIRECTION OF TRAFFIC | | ARROW BOARD |
| | PLASTIC DRUM | | |

NOTES

1. MAINTAIN STRIPING FROM SUBSTAGE 1 UNLESS OTHERWISE SHOWN
2. MAINTAIN SIGNS ALONG STERLING AVE AND SCENIC DRIVE IN ADVANCE OF THE WORK AS INDICATED IN THE PREVIOUS STAGES
3. MAINTAIN ACCESS TO BUSINESSES ALONG SCENIC DR

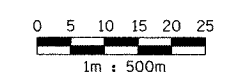
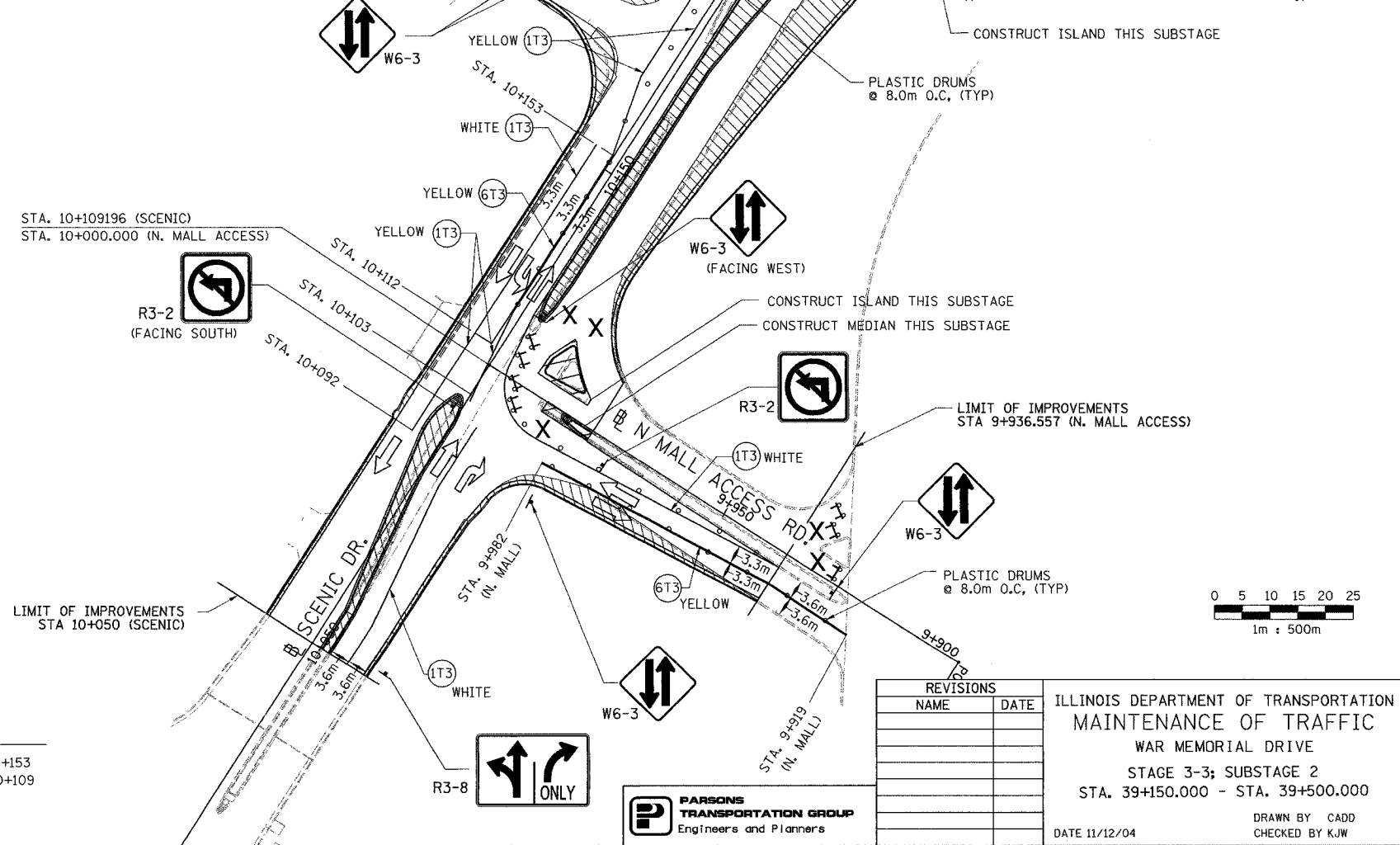


| PAVEMENT MARKING LEGEND | | RAISED REFLECTIVE PAVEMENT MARKERS | |
|---------------------------|--|------------------------------------|---|
| (1X) 100 (4) SOLID | | 1 | ONE-WAY CRYSTAL MARKER AT 24.38 m(80') CENTERS |
| (2X) 150 (6) SOLID | | 2 | ONE-WAY CRYSTAL MARKER AT 12.19 m(40') CENTERS |
| (3X) 200 (8) SOLID | | 3 | ONE-WAY CRYSTAL MARKER AT 6.10 m(20') CENTERS |
| (4X) 300 (12) SOLID | | 4 | ONE-WAY AMBER MARKER AT 12.19 m(40') CENTERS |
| (5X) 600 (24) SOLID | | 5 | TWO-WAY AMBER MARKER AT 12.19 m(40') CENTERS FOR SPEEDS LESS THAN 45 MPH |
| (6X) 100 (4) DOUBLE SOLID | | 6 | TWO-WAY AMBER MARKER AT 24.38 m(80') CENTERS FOR SPEEDS GREATER THAN 45 MPH |
| (7X) 100 (4) SKIP DASH | | | |
| (8X) 150 (6) SKIP DASH | | | |
| (9X) 200 (8) SKIP DASH | | | |
| (10X) 200 (8) DOTTED | | | |
| (11X) LETTERS AND ARROWS | | | |

WHERE "X" DESIGNATES: = WHITE
E = EPOXY - YELLOW
P = PAINT
T = THERMOPLASTIC
TP= TEMPORARY PAVEMENT MARKING TAPE
T3= PAVEMENT MARKING TAPE, TYPE III
W3= WET TEMPORARY PAVEMENT MARKING TAPE, TYPE III

All dimensions are in millimeters (inches) unless otherwise shown.

- (IT3) 100 mm SOLID, PAVEMENT MARKING TAPE, TYPE III (WHITE)
- WAR MEMORIAL DR. RT STA. 39+300 TO STA. 39+500
WAR MEMORIAL DR. RT STA. 39+300 TO STA. 39+410
SCENIC DR. LT STA. 10+092 TO STA. 10+153
SCENIC DR. RT STA. 10+050 TO STA. 10+098
SCENIC DR. RT STA. 10+103 TO STA. 10+225
N. MALL ACCESS LT STA. 10+254 TO STA. 10+289
- (7T3) 100 mm SKIP DASH, PAVEMENT MARKING TAPE, TYPE III (WHITE)
- WAR MEMORIAL DR. RT STA. 39+300 TO STA. 39+500
- (6T3) 100 mm DOUBLE SOLID, PAVEMENT MARKING TAPE, TYPE III (YELLOW)
- SCENIC DR. LT STA. 10+112 TO STA. 10+153
N. MALL ACCESS LT STA. 9+936 TO STA. 9+981
- (IT3) 100 mm SOLID, PAVEMENT MARKING TAPE, TYPE III (YELLOW)
- WAR MEMORIAL DR. RT STA. 39+230 TO STA. 39+410 SCENIC DR. LT STA. 10+109 TO STA. 10+153
WAR MEMORIAL DR. RT STA. 39+441 TO STA. 39+500 SCENIC DR. LT STA. 10+050 TO STA. 10+109
SCENIC DR. LT STA. 10+153 TO STA. 10+219
SCENIC DR. LT STA. 10+153 TO STA. 10+219



| REVISIONS | |
|-----------|------|
| NAME | DATE |
| | |
| | |
| | |
| | |
| | |

ILLINOIS DEPARTMENT OF TRANSPORTATION
MAINTENANCE OF TRAFFIC
WAR MEMORIAL DRIVE
STAGE 3-3; SUBSTAGE 2
STA. 39+150.000 - STA. 39+500.000

DATE 11/12/04 DRAWN BY CADD
CHECKED BY KJW