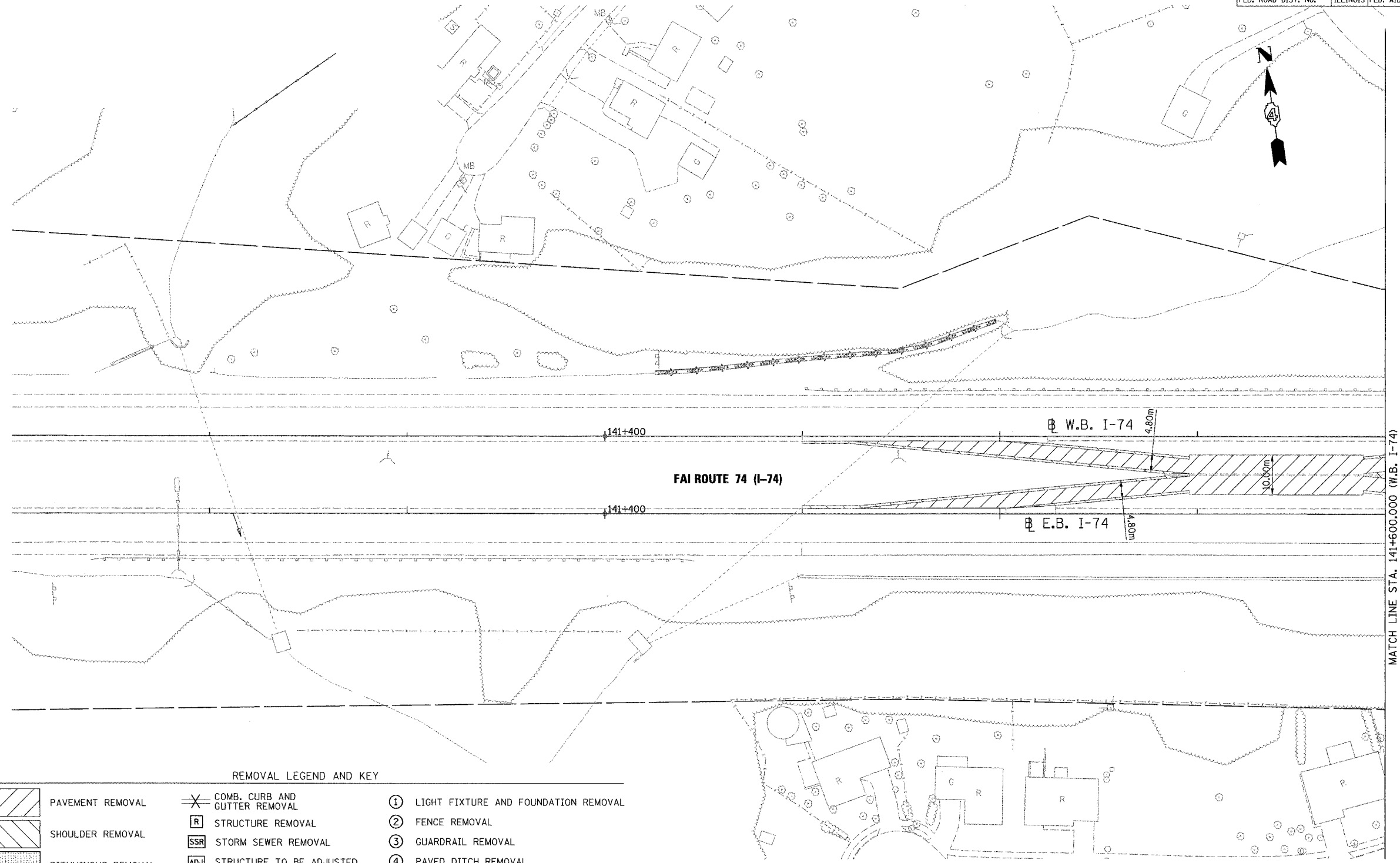


|                     |           |                     |                  |           |
|---------------------|-----------|---------------------|------------------|-----------|
| F.A. - RTE.         | SECTION   | COUNTY              | TOTAL SHEETS     | SHEET NO. |
| 74                  | (72-7)R-3 | PEORIA              | 1340             | 234       |
| STA. 141+250.000    |           | TO STA. 141+600.000 |                  |           |
| FED. ROAD DIST. NO. | ILLINOIS  |                     | FED. AID PROJECT |           |

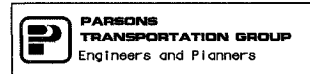
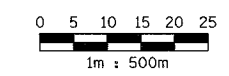


MATCH LINE STA. 141+600.000 (W.B. I-74)

REMOVAL LEGEND AND KEY

|  |                                  |  |                               |   |                                      |
|--|----------------------------------|--|-------------------------------|---|--------------------------------------|
|  | PAVEMENT REMOVAL                 |  | COMB. CURB AND GUTTER REMOVAL | ① | LIGHT FIXTURE AND FOUNDATION REMOVAL |
|  | SHOULDER REMOVAL                 |  | STRUCTURE REMOVAL             | ② | FENCE REMOVAL                        |
|  | BITUMINOUS REMOVAL               |  | STORM SEWER REMOVAL           | ③ | GUARDRAIL REMOVAL                    |
|  | MEDIAN REMOVAL                   |  | STRUCTURE TO BE ADJUSTED      | ④ | PAVED DITCH REMOVAL                  |
|  | SIDEWALK REMOVAL                 |  | ITEM TO BE RELOCATED          | ⑤ | FULL DEPTH SAWCUT                    |
|  | PAVEMENT REMOVAL AND REPLACEMENT |  | VALVE BOX TO BE ADJUSTED      |   |                                      |
|  |                                  |  | ADJUST FRAME AND GRATE        |   |                                      |
|  |                                  |  | STRUCTURE TO BE CLEANED       |   |                                      |
|  |                                  |  | TREE REMOVAL                  |   |                                      |
|  |                                  |  | TREE REMOVAL - HECTARES       |   |                                      |

NOTES:  
 1. EXISTING UNDERDRAINS SHALL BE REMOVED AND INCLUDED IN THE COST OF PAVEMENT REMOVAL.



| REVISIONS |      |
|-----------|------|
| NAME      | DATE |
|           |      |
|           |      |
|           |      |
|           |      |
|           |      |
|           |      |

ILLINOIS DEPARTMENT OF TRANSPORTATION  
 EXISTING ROADWAY PLAN  
 FAI ROUTE 74 (I-74) (WB)  
 STA. 141+250.000 - STA. 141+600.000  
 DRAWN BY CADD  
 CHECKED BY KJW  
 DATE 11/12/04