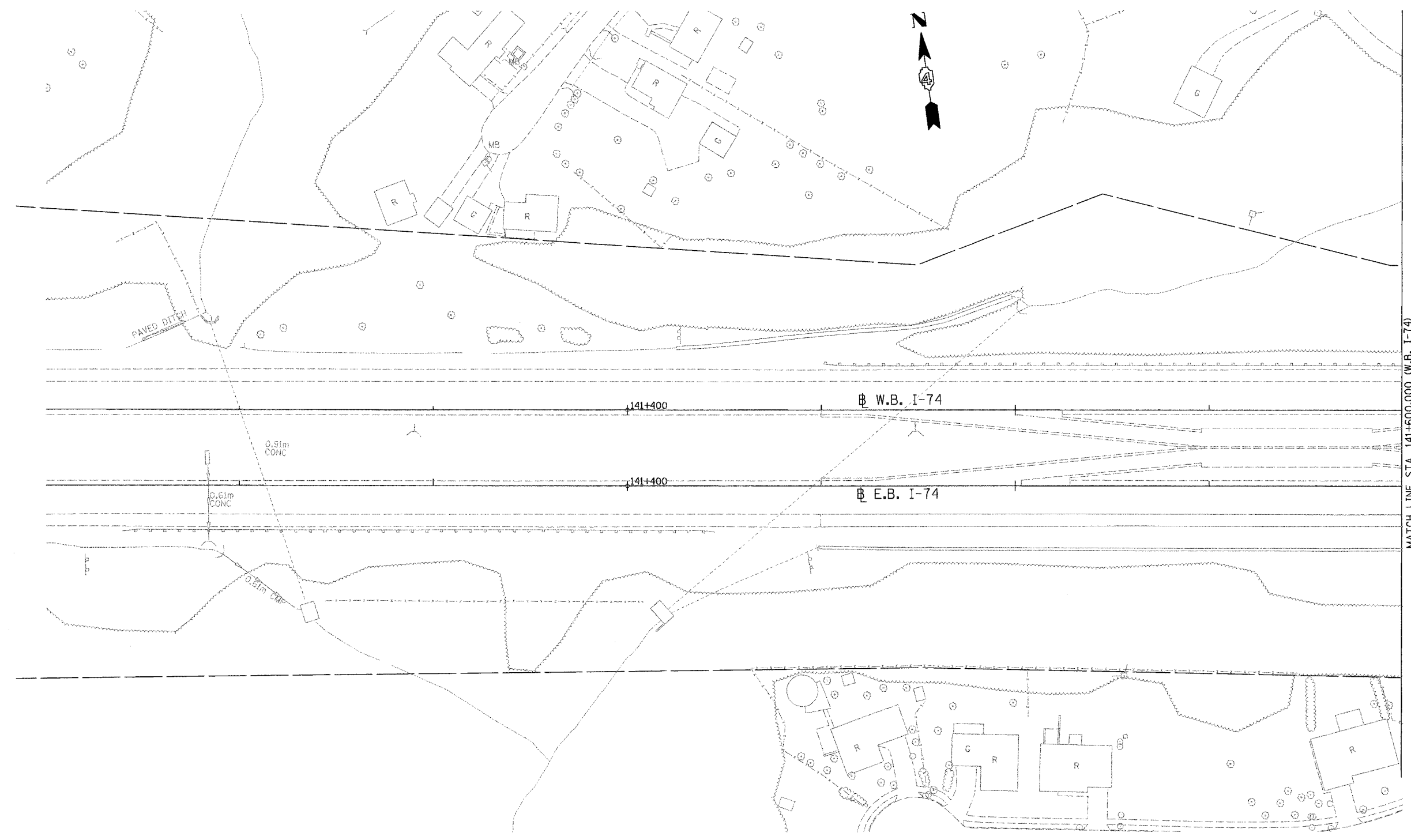
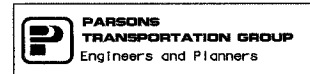
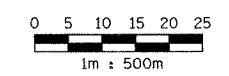


F.A. RTE.	SECTION	COUNTY	TOTAL SHEETS	SHEET NO.
74	(72-7)R-3	PEORIA	1360	225
STA. 141+250.000		TO STA. 141+600.000		
FED. ROAD DIST. NO.	ILLINOIS		FED. AID PROJECT	



MATCH LINE STA. 141+600.000 (W.B. I-74)



REVISIONS	
NAME	DATE

ILLINOIS DEPARTMENT OF TRANSPORTATION  
**PROPOSED ROADWAY PLAN**  
 FAI ROUTE 74 (I-74) (WB)  
 STA. 141+250.000 - STA. 141+600.000  
 DRAWN BY CADD  
 DATE 11/12/04  
 CHECKED BY KJW