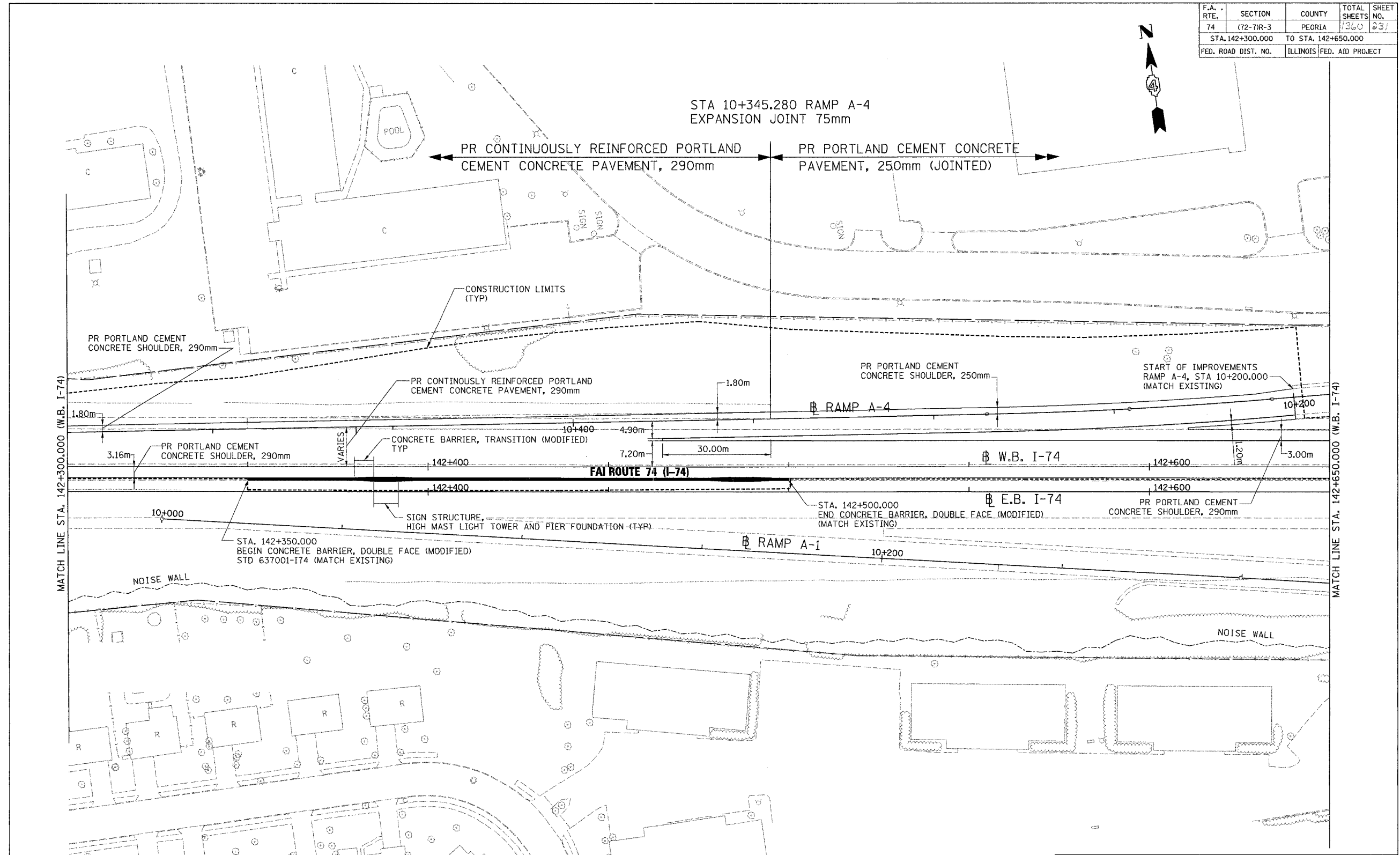
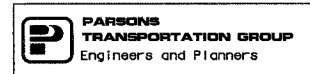
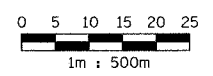


| | | | |
|---------------------|-----------|---------------------|------------------|
| F.A. RTE. | SECTION | COUNTY | TOTAL SHEETS NO. |
| 74 | (72-7)R-3 | PEORIA | 1360 231 |
| STA. 142+300.000 | | TO STA. 142+650.000 | |
| FED. ROAD DIST. NO. | ILLINOIS | | FED. AID PROJECT |



MATCH LINE STA. 142+300.000 (W.B. I-74)

MATCH LINE STA. 142+650.000 (W.B. I-74)



| REVISIONS | |
|-----------|------|
| NAME | DATE |
| | |
| | |
| | |
| | |
| | |
| | |

ILLINOIS DEPARTMENT OF TRANSPORTATION
PROPOSED ROADWAY PLAN
 FAI ROUTE 74 (I-74) (WB)
 STA. 142+300.000 - STA. 142+650.000
 DRAWN BY CADD
 CHECKED BY KJW
 DATE 11/12/04