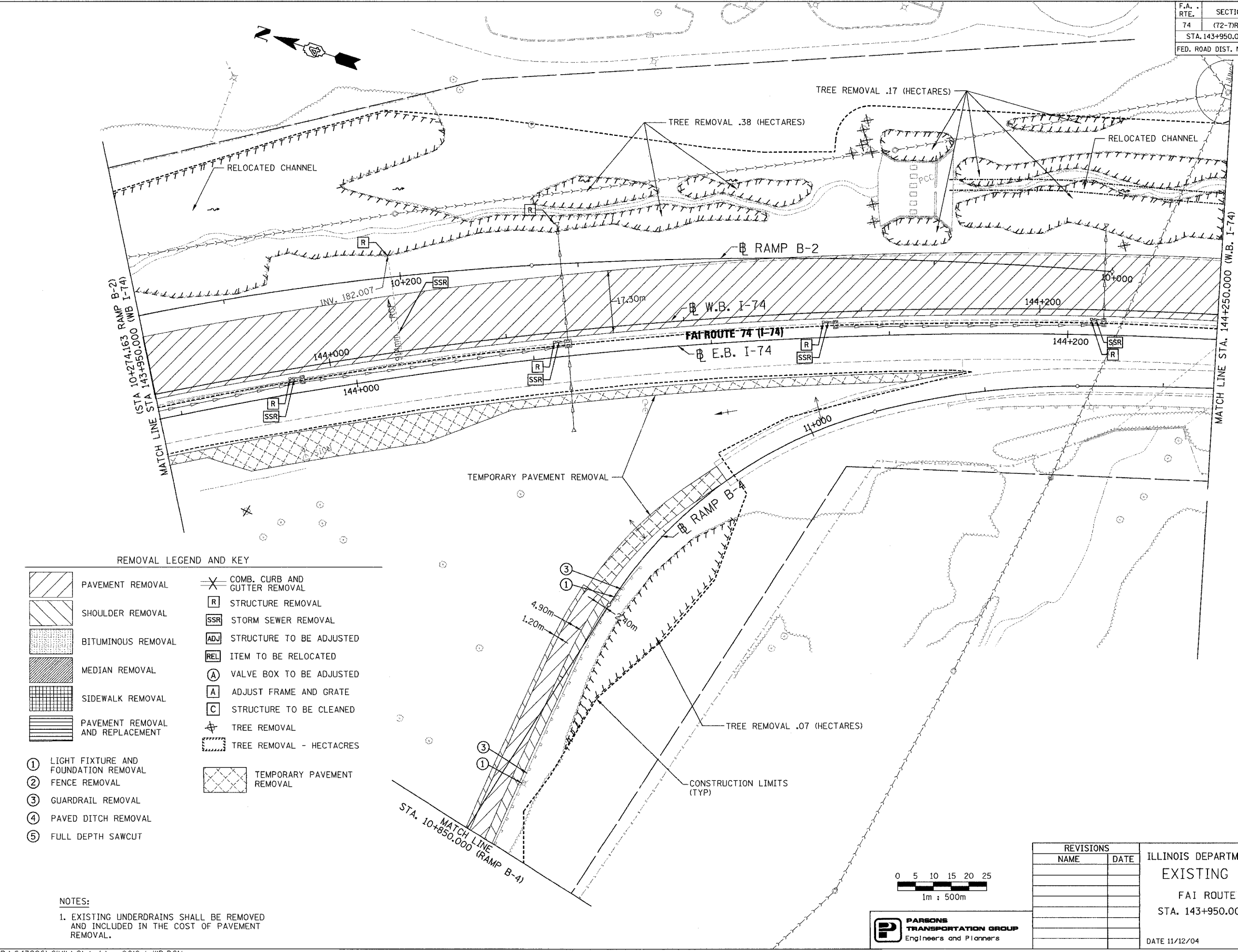


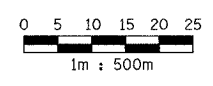
|                     |            |                     |                  |           |
|---------------------|------------|---------------------|------------------|-----------|
| F.A. RTE.           | SECTION    | COUNTY              | TOTAL SHEETS     | SHEET NO. |
| 74                  | (72-71R-3) | PEORIA              | 1360             | 242       |
| STA. 143+950.000    |            | TO STA. 144+250.000 |                  |           |
| FED. ROAD DIST. NO. | ILLINOIS   |                     | FED. AID PROJECT |           |



REMOVAL LEGEND AND KEY

- |  |                                      |  |                               |
|--|--------------------------------------|--|-------------------------------|
|  | PAVEMENT REMOVAL                     |  | COMB. CURB AND GUTTER REMOVAL |
|  | SHOULDER REMOVAL                     |  | STRUCTURE REMOVAL             |
|  | BITUMINOUS REMOVAL                   |  | STORM SEWER REMOVAL           |
|  | MEDIAN REMOVAL                       |  | STRUCTURE TO BE ADJUSTED      |
|  | SIDEWALK REMOVAL                     |  | ITEM TO BE RELOCATED          |
|  | PAVEMENT REMOVAL AND REPLACEMENT     |  | VALVE BOX TO BE ADJUSTED      |
|  | LIGHT FIXTURE AND FOUNDATION REMOVAL |  | ADJUST FRAME AND GRATE        |
|  | FENCE REMOVAL                        |  | STRUCTURE TO BE CLEANED       |
|  | GUARDRAIL REMOVAL                    |  | TREE REMOVAL                  |
|  | PAVED DITCH REMOVAL                  |  | TREE REMOVAL - HECTARES       |
|  | FULL DEPTH SAWCUT                    |  | TEMPORARY PAVEMENT REMOVAL    |

NOTES:  
 1. EXISTING UNDERDRAINS SHALL BE REMOVED AND INCLUDED IN THE COST OF PAVEMENT REMOVAL.



**PARSONS**  
 TRANSPORTATION GROUP  
 Engineers and Planners

| REVISIONS |      |
|-----------|------|
| NAME      | DATE |
|           |      |
|           |      |
|           |      |
|           |      |
|           |      |
|           |      |

ILLINOIS DEPARTMENT OF TRANSPORTATION  
 EXISTING ROADWAY PLAN  
 FAI ROUTE 74 (I-74) (WB)  
 STA. 143+950.000 - STA. 144+250.000  
 DATE 11/12/04  
 DRAWN BY CADD  
 CHECKED BY KJW