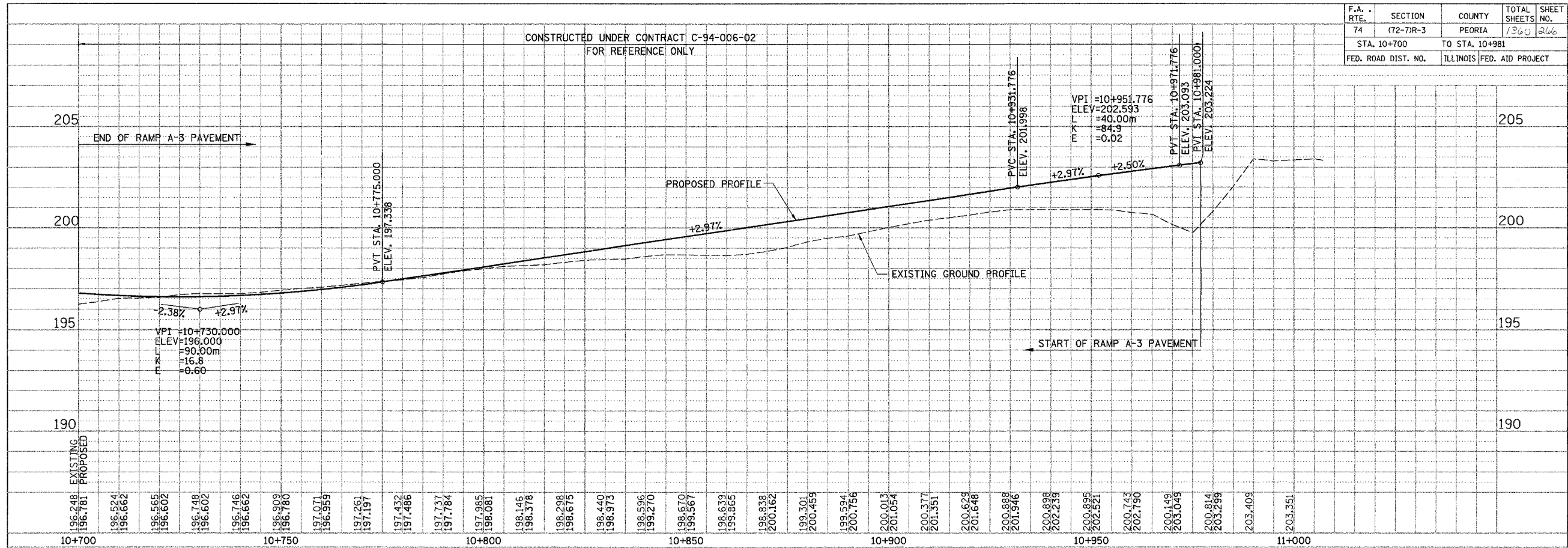


F.A. RTE.	SECTION	COUNTY	TOTAL SHEETS	SHEET NO.
74	(72-7)R-3	PEORIA	1360	266
STA. 10+700		TO STA. 10+981		
FED. ROAD DIST. NO.	ILLINOIS	FED. AID PROJECT		

CONSTRUCTED UNDER CONTRACT C-94-006-02
FOR REFERENCE ONLY

FINAL SURVEY PLOTTED	BY	DATE
NOTE BOOK TEMPLATE AREAS CHECKED		
NO.		

ORIGINAL SURVEY PLOTTED	BY	DATE
NOTE BOOK TEMPLATE AREAS CHECKED		
NO.		



ILLINOIS DEPARTMENT OF TRANSPORTATION
ROADWAY PROFILE RAMP A-3
WAR MEMORIAL DRIVE & I-74 (WB)
STA. 10+700 TO STA. 10+981
SCALE= 1:500 H
1:100 V
DATE 11/12/04
DRAWN BY CADD
CHECKED BY KJW