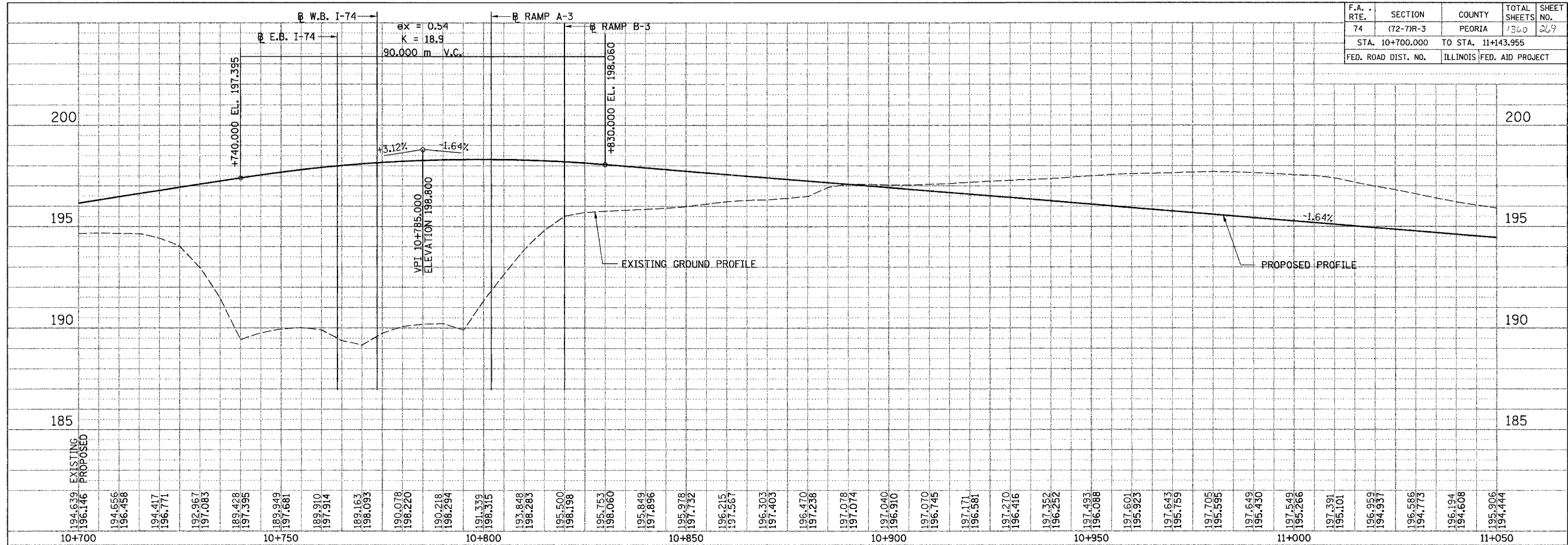
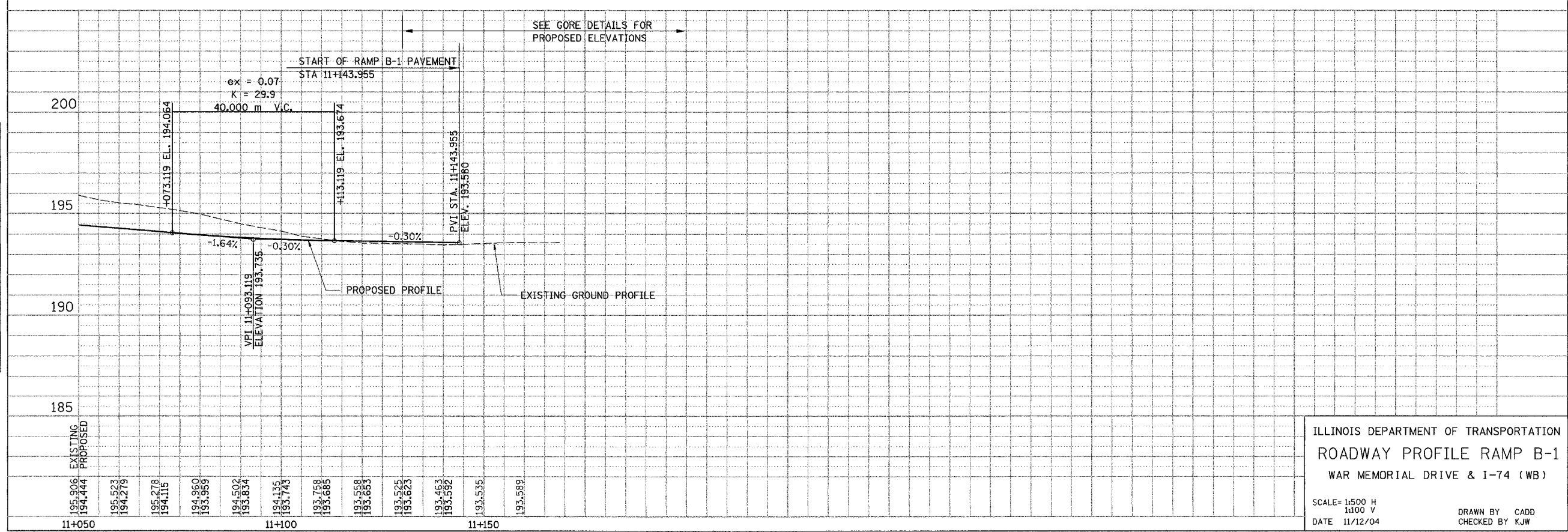


F.A. RTE.	SECTION	COUNTY	TOTAL SHEETS	SHEET NO.
74	(72-7)R-3	PEORIA	1360	269
STA. 10+700.000		TO STA. 11+143.955		
ILLINOIS FED. AID PROJECT				

FINAL SURVEY	SURVEYED	BY	DATE
NOTE BOOK	TEMPLATED		
AREAS	CHECKED		
NO.			



ORIGINAL SURVEY	SURVEYED	BY	DATE
NOTE BOOK	TEMPLATED		
AREAS	CHECKED		
NO.			



ILLINOIS DEPARTMENT OF TRANSPORTATION
ROADWAY PROFILE RAMP B-1
WAR MEMORIAL DRIVE & I-74 (WB)

SCALE= 1:500 H
1:100 V
DATE 11/12/04

DRAWN BY CADD
CHECKED BY KJW