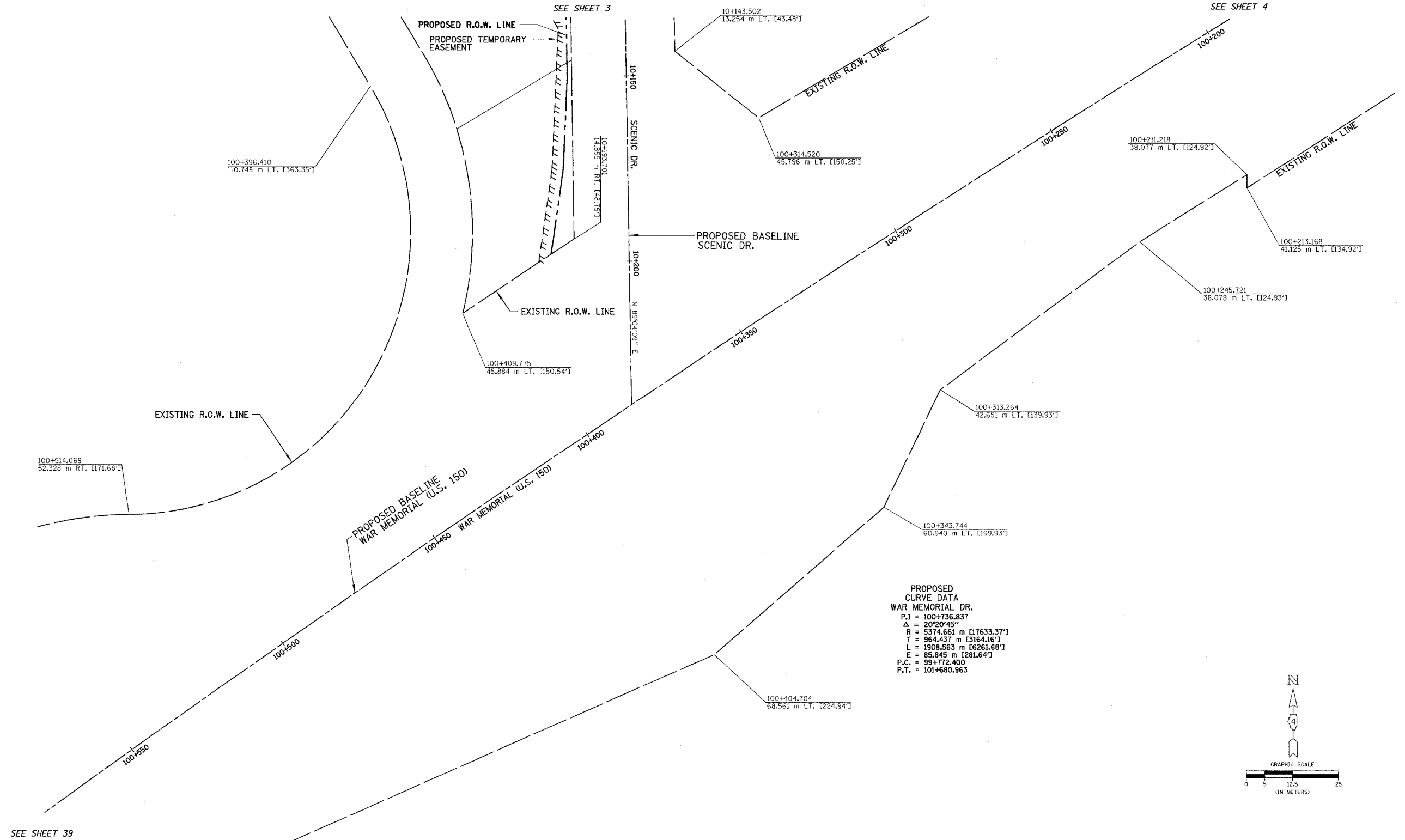
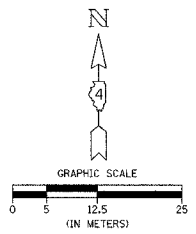


TOWNSHIP 9 NORTH, RANGE 8 EAST, 4th P.M.

APPROVED BY _____ DISTRICT ENGINEER
DATE _____



DRAWN BY _____
WRITTEN BY _____
CHECKED BY _____
INSPECTED BY _____



NOTES:
SURVEYED IN METRIC, DIMENSIONS SHOWN IN ENGLISH HAVE BEEN CONVERTED (1 METER = 3.28083333') METRIC DIMENSIONS AND AREAS SHALL CONTROL.
() ENGLISH EQUIVALENT
() RECORD DATA

NOTE: PROJECT DATUM IS NAD83 ILLINOIS STATE PLANE COORDINATES, WEST ZONE. THE PROJECT COMBINATION FACTOR IS 0.999941679. ALL LAND ACQUISITION DOCUMENTS WERE PROJECTED TO "GROUND" COORDINATES. FINAL STAKED ALIGNMENTS WERE PROJECTED TO "GROUND" COORDINATES. ALL CONSTRUCTION DOCUMENTS WERE DEVELOPED USING "GRID" COORDINATES.

NOTE: STATION OFFSETS SHOWN FROM THE PROPOSED BASELINE OF WAR MEMORIAL DR. & SCENIC DR.

**RIGHT OF WAY PLANS
F.A.I. ROUTE 74**

CATALOG NO. 031087-00

SECTION (72-8)R-1.72(9.9-1)R

STATION 100+200 TO 100+550

JOB. NO. R-94-015-98 COUNTY PEORIA

SCALE 1 : 500 SHEET 36 OF 1360