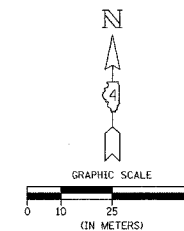
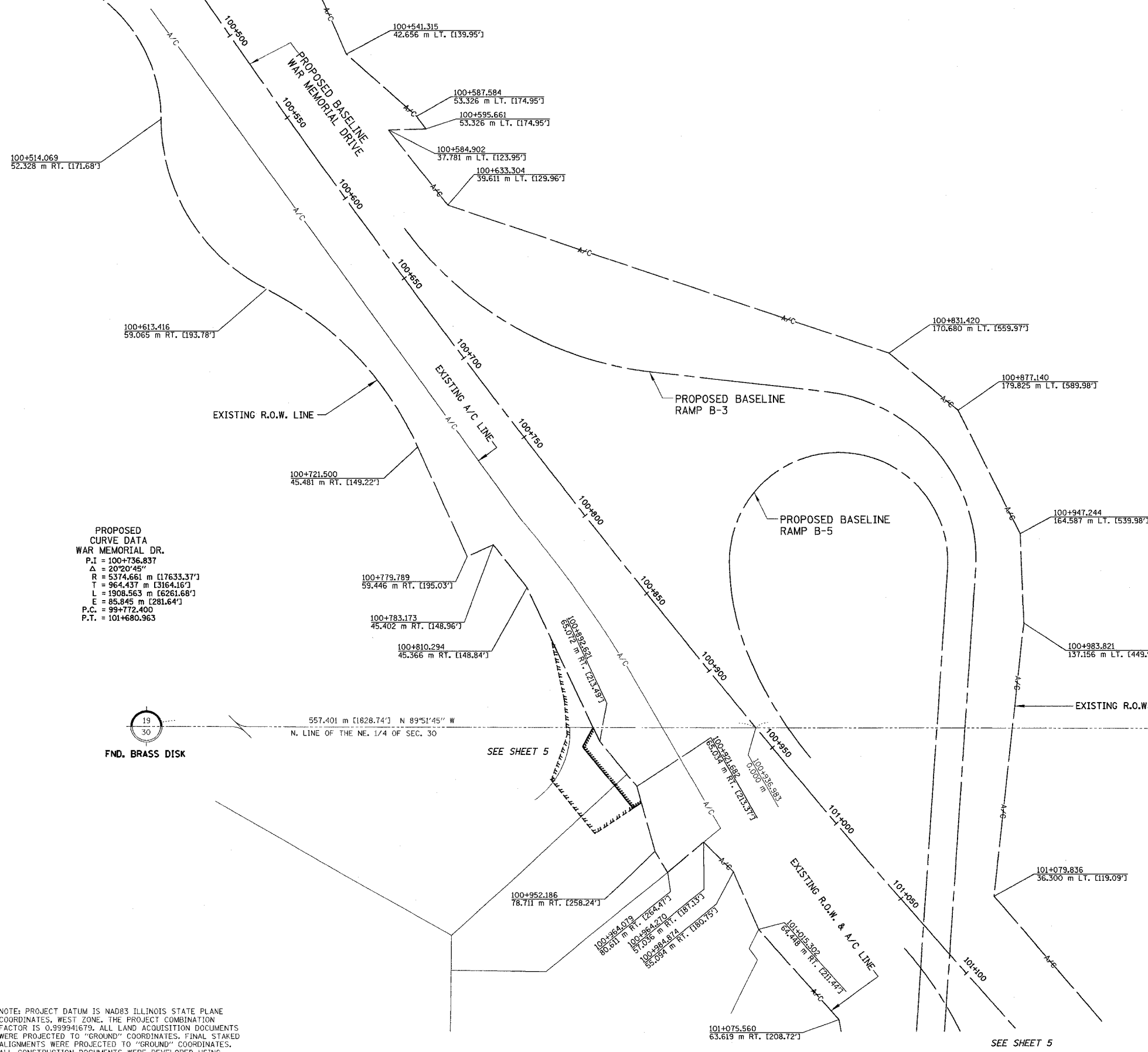


# TOWNSHIP 9 NORTH, RANGE 8 EAST, 4th P.M.

SEE SHEET 36



APPROVED BY \_\_\_\_\_ DISTRICT ENGINEER  
DATE \_\_\_\_\_



**PROPOSED CURVE DATA  
WAR MEMORIAL DR.**  
 P.I. = 100+736.837  
 Δ = 20°20'45"  
 R = 5374.661 m [17633.37']  
 T = 964.437 m [3164.16']  
 L = 1908.563 m [6261.68']  
 E = 85.845 m [281.64']  
 P.C. = 99+772.400  
 P.T. = 101+680.963

19  
30  
FND. BRASS DISK  
 557.401 m [1828.74'] N 89°51'45" W  
 N. LINE OF THE NE. 1/4 OF SEC. 30

DRAWN BY \_\_\_\_\_  
 WRITTEN BY \_\_\_\_\_  
 CHECKED BY \_\_\_\_\_  
 INSPECTED BY \_\_\_\_\_

NOTES:  
 SURVEYED IN METRIC, DIMENSIONS SHOWN IN ENGLISH HAVE BEEN CONVERTED (1 METER = 3.28083333') METRIC DIMENSIONS AND AREAS SHALL CONTROL.  
 ( ) ENGLISH EQUIVALENT  
 ( ) RECORD DATA

NOTE: PROJECT DATUM IS NAD83 ILLINOIS STATE PLANE COORDINATES, WEST ZONE. THE PROJECT COMBINATION FACTOR IS 0.999941679. ALL LAND ACQUISITION DOCUMENTS WERE PROJECTED TO "GROUND" COORDINATES. FINAL STAKED ALIGNMENTS WERE PROJECTED TO "GROUND" COORDINATES. ALL CONSTRUCTION DOCUMENTS WERE DEVELOPED USING "GRID" COORDINATES.

NOTE: STATION OFFSETS SHOWN FROM THE PROPOSED BASELINE OF WAR MEMORIAL DR.

<b>RIGHT OF WAY PLANS F.A.I. ROUTE 74</b>	
CATALOG NO.	031087-00
SECTION	(72-8)R-1.72(9.9-1)R
STATION	100+500 TO 101+100
JOB. NO.	R-94-015-98 COUNTY PEORIA
SCALE	1 : 1000 SHEET 39 OF 1360