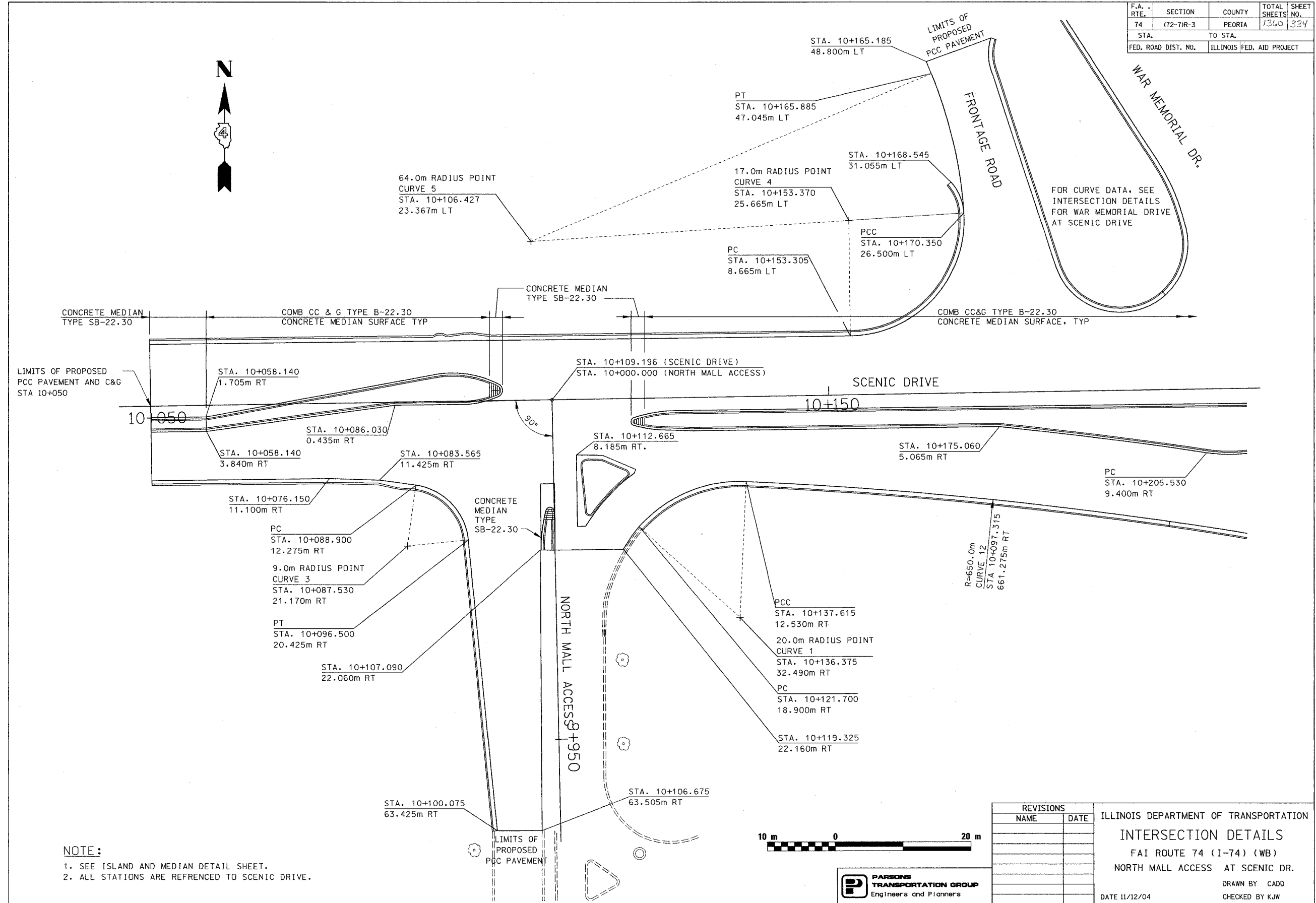
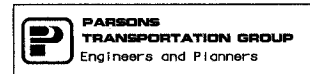


F.A. RTE.	SECTION	COUNTY	TOTAL SHEETS	SHEET NO.
74	(72-7)R-3	PEORIA	1340	334
STA.		TO STA.		
FED. ROAD DIST. NO.		ILLINOIS FED. AID PROJECT		



LIMITS OF PROPOSED PCC PAVEMENT AND C&G STA 10+050

NOTE:
 1. SEE ISLAND AND MEDIAN DETAIL SHEET.
 2. ALL STATIONS ARE REFERENCED TO SCENIC DRIVE.



REVISIONS	
NAME	DATE

ILLINOIS DEPARTMENT OF TRANSPORTATION
INTERSECTION DETAILS
 FAI ROUTE 74 (I-74) (WB)
 NORTH MALL ACCESS AT SCENIC DR.
 DRAWN BY CADD
 CHECKED BY KJW
 DATE 11/12/04