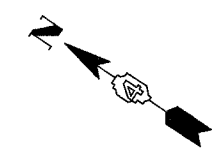


F.A. RTE.	SECTION	COUNTY	TOTAL SHEETS	SHEET NO.
74	(72-7R-3	PEORIA	1360	360
STA. 38+965.067		TO STA. 39+150.000		
FED. ROAD DIST. NO.	ILLINOIS FED. AID PROJECT			



PAVEMENT MARKING LEGEND

- (1X) 100 (4) SOLID
- (2X) 150 (6) SOLID
- (3X) 200 (8) SOLID
- (4X) 300 (12) SOLID
- (5X) 600 (24) SOLID
- (6X) 100 (4) DOUBLE SOLID
- (7X) 100 (4) SKIP DASH
- (8X) 150 (6) SKIP DASH
- (9X) 200 (8) SKIP DASH
- (10X) 200 (8) DOTTED
- (11X) LETTERS AND ARROWS

RAISED REFLECTIVE PAVEMENT MARKERS

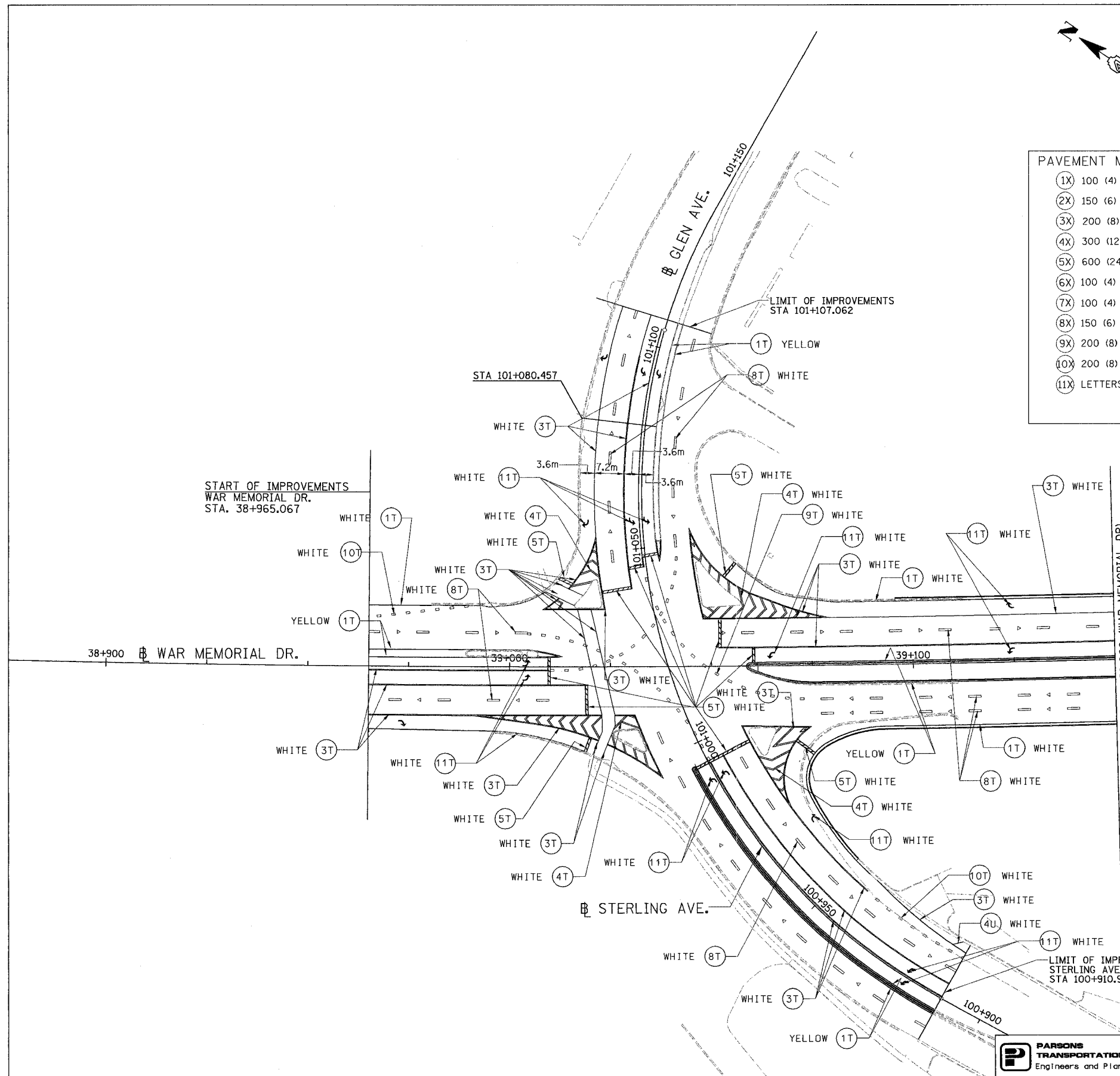
- 1 < ONE-WAY CRYSTAL MARKER AT 24.38 m(80') CENTERS
- 2 < ONE-WAY CRYSTAL MARKER AT 12.19 m(40') CENTERS
- 3 < ONE-WAY CRYSTAL MARKER AT 6.10 m(20') CENTERS
- 4 < ONE-WAY AMBER MARKER AT 12.19 m(40') CENTERS
- 5 < TWO-WAY AMBER MARKER AT 12.19 m(40') CENTERS FOR SPEEDS LESS THAN 45 MPH
- 6 < TWO-WAY AMBER MARKER AT 24.38 m(80') CENTERS FOR SPEEDS GREATER THAN 45 MPH

WHERE "X" DESIGNATES:

- E = EPOXY
- P = PAINT
- T = THERMOPLASTIC
- U = POLYUREA
- TP= TEMPORARY PAVEMENT MARKING TAPE
- T3= PAVEMENT MARKING TAPE, TYPE III

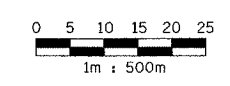
— WHITE
- YELLOW

All dimensions are in millimeters (inches) unless otherwise shown.



MATCH LINE STA. 39+150.000 (WAR MEMORIAL DR)

- NOTES:
- SEE PAVEMENT MARKING DETAILS FOR MARKINGS LAYOUT DIMENSIONS.
 - LANE DIMENSIONS ARE TO CENTER OF PAVEMENT MARKING.



REVISIONS	
NAME	DATE

ILLINOIS DEPARTMENT OF TRANSPORTATION
PAVEMENT MARKING PLAN
 WAR MEMORIAL DRIVE
 STA. 38+965.067 - STA. 39+150.000

DATE 11/12/04

DRAWN BY CADD
 CHECKED BY KJW

