

ROUTE NO.	SECT.	COUNTY	SHEET NO.	TOTAL SHEETS
F.A.I. 74	(72-7) R-3	PEORIA	421	1360
FED. ROAD DIST. NO. 7	ILLINOIS	FED. AID PROJECT		

CONTRACT NO. 68200

GENERAL NOTES

Fasteners shall be high strength bolts. Bolts M20, open holes 24 mm ϕ , unless otherwise noted.

Calculated mass of Structural Steel = 63,560 kg (AASHTO M 270M Grade 345)

Field welding of construction accessories will not be permitted to the bottom flange of girders.

Anchor bolts shall be set before bolting diaphragms over supports.

The main load carrying member components subject to tensile stress shall conform to the Supplemental Requirements for Notch Toughness Zone 2. These components are the tension flanges, webs and all splice plate material except fill plates.

The structural steel bearing plates of the Elastomeric Bearing Assembly shall conform to the requirements of AASHTO M 270M Grade 345.

Reinforcement bars shall conform to the requirements of AASHTO M 31M or M 322M Grade 400.

Slope wall shall be reinforced with welded wire fabric, 152 x 152 - MW25.8 x MW25.8 with a mass of 2.91 kg/m²

The Contractor shall drive one (1) test pile in a permanent location at the west abutment as directed by the Engineer before ordering the remainder of piles.

The concrete for bridge floors finished according to Article 503.17 of the Standard Specifications, shall be placed and compacted parallel to the skew in uniform increments along centerline of bridge. The finishing machine, when required, shall be set parallel to the skew for striking off and screeding the concrete.

Bridge Seat Sealer shall be applied to the seat area of the abutments.

All dimensions are in millimeters (mm) except as noted.

The organic zinc rich primer / Epoxy / Urethane Paint System shall be used for painting of new structural steel except where otherwise noted. The color of the final finish coat for all steel surfaces shall be light gray, Munsell No 10Y 7/1. See Special Provision for "Cleaning and Painting New Metal Structures." The three coat paint system shall be applied in the shop.

The SSPC-QP1 Painting Contractor certification will not be required for this bridge.

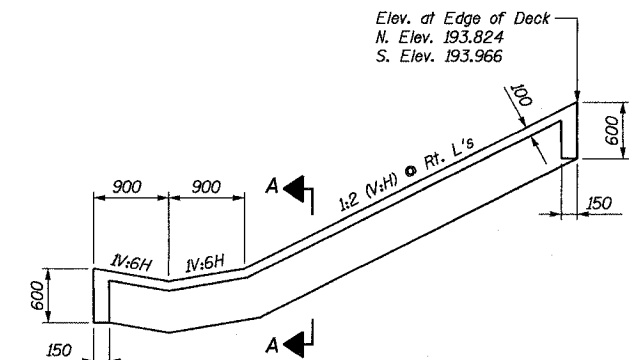
All construction joints shall be bonded.

INDEX OF DRAWINGS

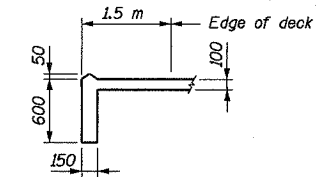
Sheet #	Drwg. No.	Description
1	G-1	General Plan
2	G-2	General Notes, Total Bill of Material, Misc. Details
3	F-1	Foundation Layout
4	SLB-1	Top of Slab Elevations I
5	SLB-2	Top of Slab Elevations II
6	DK-1	Deck Plan & Section
7	DK-2	Parapet Elevation & Details
8	S-1	Framing Plan
9	S-2	Girder Elevation and Details
10	S-3	Steel Details
11	BRG-1	Fixed & Elastomeric Expansion Bearings
12	AB-1	West Abutment
13	AB-2	West Abutment Details
14	AB-3	East Abutment
15	AB-4	East Abutment Details
16	D-1	Drainage Scupper, Type 1
17	EX-1	Continuous Seal Type Neoprene Expansion Joints
18	BS-1	Bar Splicer Assembly Details
19	PL-1	Metal Shell Pile Details
20	A-1	Anchor Bolt Details
21	RL-1	Railing Details - Single Rail
22	BL-1	Boring Logs I
23	BL-2	Boring Logs II

TOTAL BILL OF MATERIAL

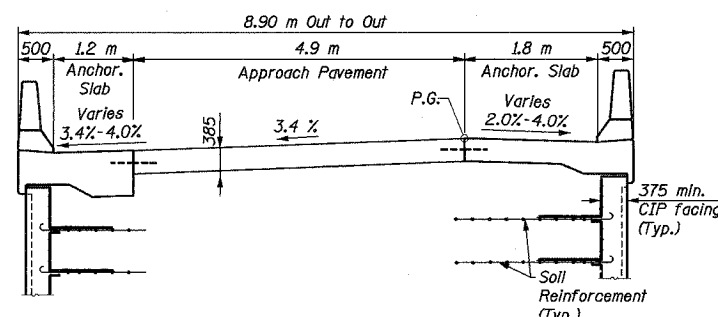
ITEM	UNIT	SUPER	SUB	TOTAL
Elastomeric Bearing Assembly, Type I	Each	6		6
Stud Shear Connectors	Each	1038		1038
Name Plates	Each	1		1
Neoprene Expansion Joint 50 mm	m	24.4		24.4
Concrete Structures	m ³		77.2	77.2
Concrete Superstructure	m ³	89.4		89.4
Bridge Deck Grooving	m ²	269		269
Protective Coat	m ²	338		338
Furnishing and Erecting Structural Steel	L.Sum			1
Reinforcement Bars, Epoxy Coated	kg	10,850	4730	15,580
Slope Wall 100 mm	m ²		111	111
Furnishing Metal Pile Shells 356mm	m		437	437
Driving And Filling Shells	m		437	437
Test Pile Metal Shells	Each		1	1
Bridge Seat Sealer	m ²		41	41
Drainage Scuppers, Type I	Each	2		2
Bar Splicers	Each		78	78
Aluminum Railing, Type H (Special)	m	68.0		68.0



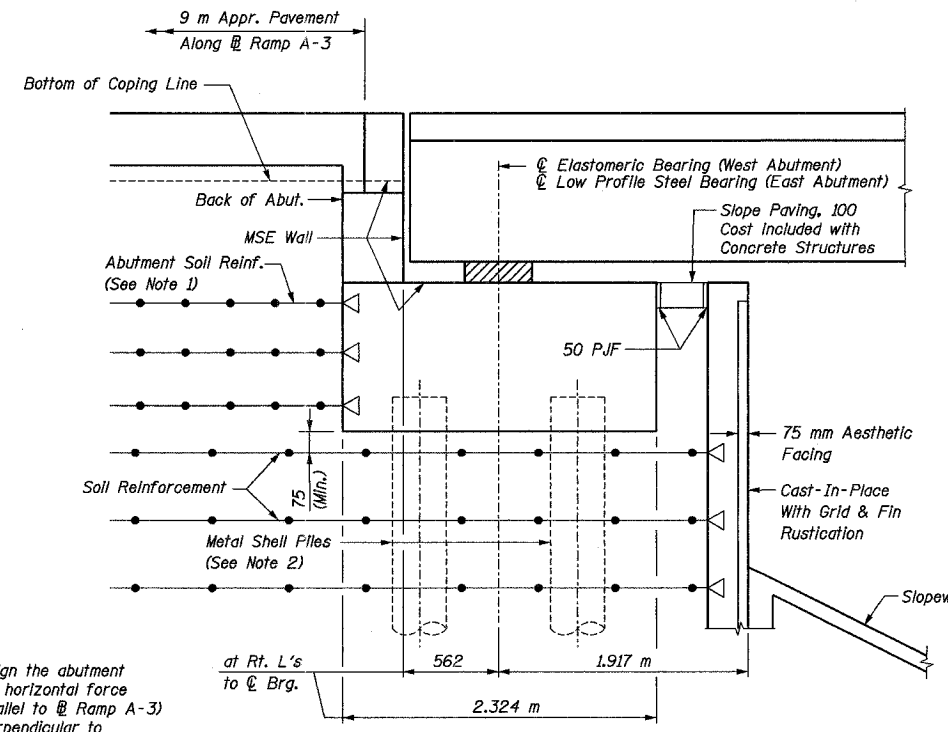
SECTION THRU SLOPEWALL



SECTION A-A



SECTION THRU APPROACH SLAB
Looking Upstation



SECTION THRU ABUTMENT
(Typ. Both Ends)

- Notes on Abutments:
- The MSE wall supplier to design the abutment soil reinforcement to resist a horizontal force of 30 kN/m of abutment (parallel to ϕ Ramp A-3) and 21 kN/m of abutment (perpendicular to ϕ Ramp A-3)
 - Precore piles to 3.0 m below base of MSE material. Piles must be driven prior to placement of MSE. Coat piles above existing ground with 6 mm min. thickness of either asphaltic cement or S.C. or M.C. liquid asphalt.

REVISION	DATE	DESCRIPTION
STATE OF ILLINOIS DEPARTMENT OF TRANSPORTATION		
GENERAL NOTES, TOTAL BILL OF MATERIAL, MISC. DETAILS		
RAMP A-3 OVER RAMP B-5 F.A.I. ROUTE 74 (SECTION 72-7)R-3 PEORIA COUNTY STA. 10+418.515 (RAMP A-3) STRUCTURE NUMBER 072-0172		
PARSONS TRANSPORTATION GROUP CHICAGO, ILLINOIS		
DRAWING NO. G-2	SCALE N.T.S.	DATE 11/16/04
		SHEET NO. 2

Time: 09:04:18 AM Date: 11/22/2004 File: P:\643996\struc\tracings\GPO002-1A0720172.dgn

Designed by: WEE
Checked by: AK
Drafted by: RKS
Checked by: WEE