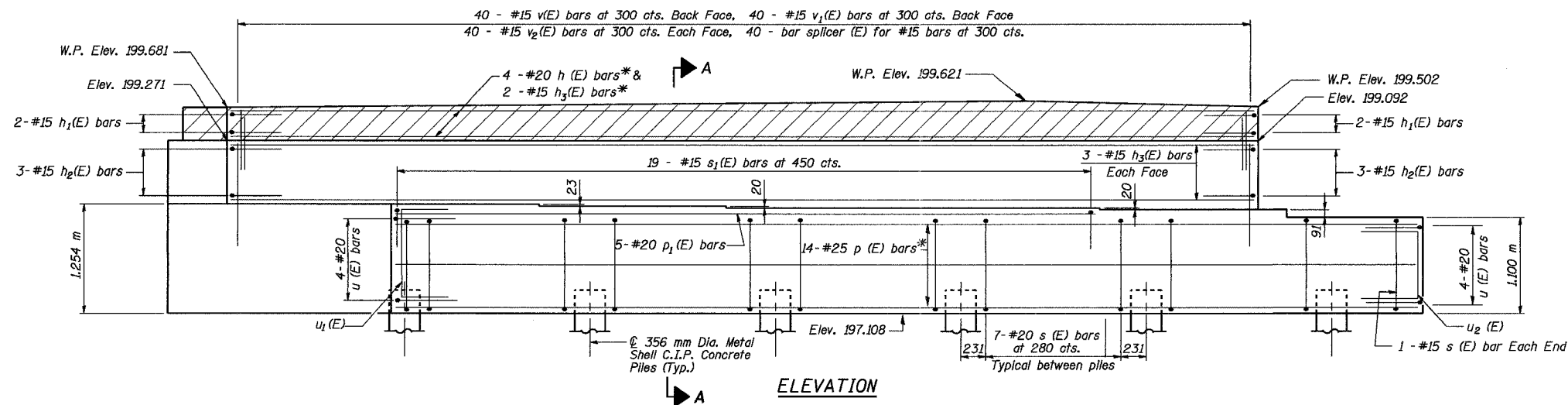


ROUTE NO.	SECT.	COUNTY	SHEET NO.	TOTAL SHEETS
F.A.I. 74	(72-7) R-3	PEORIA	431	1360
FED. ROAD DIST. NO. 7	ILLINOIS	FED. AID PROJECT		

CONTRACT NO. 68200



SEAT ELEVATIONS

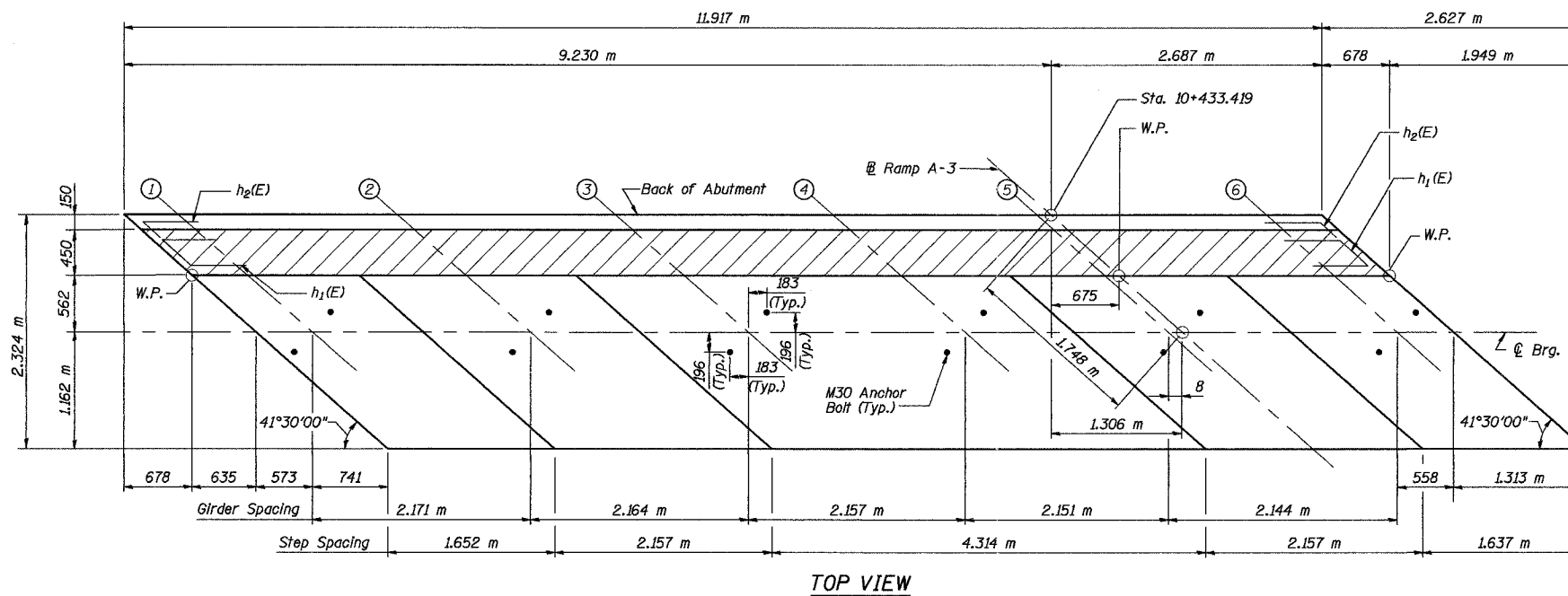
Girder No.	Seat Elevation
1	198.362
2	198.339
3	198.319
4	198.319
5	198.299
6	198.208

PILE DATA

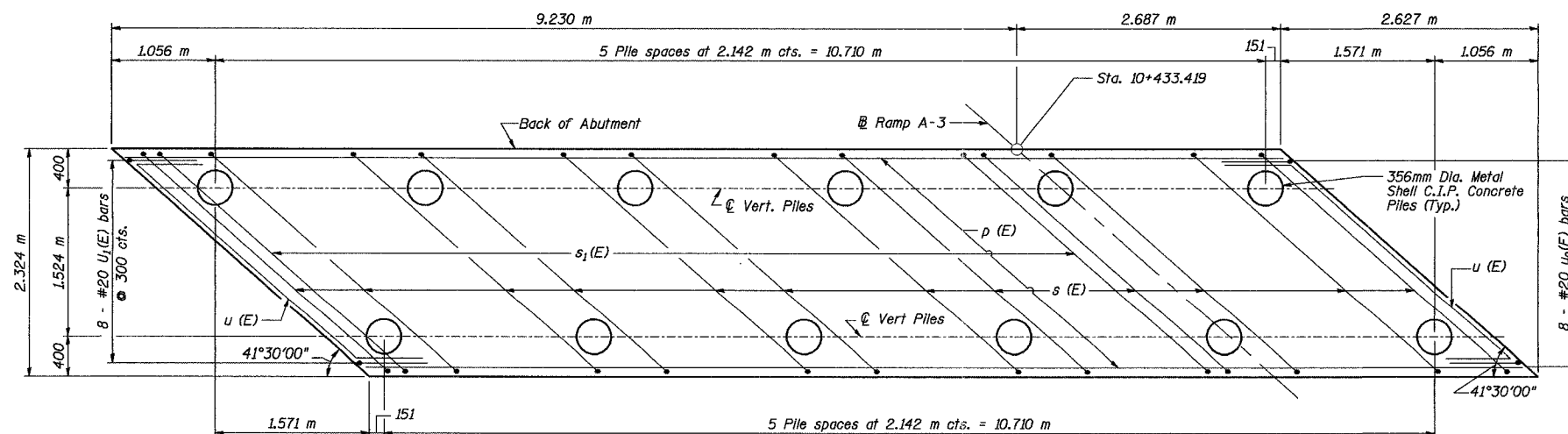
Type: 356 mm Dia. Metal Shell C.I.P. Concrete Piles
 Capacity: 500 kN
 Est. Length: 19.0 m
 No. Required: 11 plus 1 test pile

Notes:

- Work this drawing with Dwg. No. AB-2.
- Top of backwall shall conform to grade and cross slope of roadway.
- All dimensions are in millimeters (mm) except as noted.
- Space reinforcement in cap to miss anchor bolts.
- Pour steps monolithically with cap.
- Reinforcement bars designated (E) shall be epoxy coated.
- Hatched area to be poured after superstructure forms have been removed. Quantity of concrete included with Concrete Superstructure on Dwg No. DK-2.
- For Bar Schedule and Bill of Material, See Dwg. No. AB-2.
- For Metal Shell Pile Details, see Dwg.No. PL-1.
- For Anchor Bolt Details, see Dwg. No. A-1.
- Bridge Seat Sealer shall be applied to abutment bridge seat.
- All concrete edges shall have 20mm chamfer, unless noted otherwise.
- * See Section A-A, Dwg. No. AB-2 for bar placement.



TOP VIEW



PLAN-PILE CAP

Designed by: WEE
 Checked by: RW
 Drafted by: RKS
 Checked by: WEE

REVISION	DATE	DESCRIPTION
STATE OF ILLINOIS DEPARTMENT OF TRANSPORTATION		
WEST ABUTMENT		
RAMP A-3 OVER RAMP B-5 F.A.I. ROUTE 74 (SECTION 72-7)R-3 PEORIA COUNTY STA. 10+418.515 (RAMP A-3) STRUCTURE NUMBER 072-0172		
PARSONS TRANSPORTATION GROUP CHICAGO, ILLINOIS		
DRAWING NO. AB-1	SCALE N.T.S.	DATE 11/16/04
		SHEET NO. 12

Time: 09:42:35 AM

Date: 11/19/2004

Filename: P:\643956\str-uctur-d\A3\072-0172-Sheet\Tracings\AB0001-1A0720172.dgn