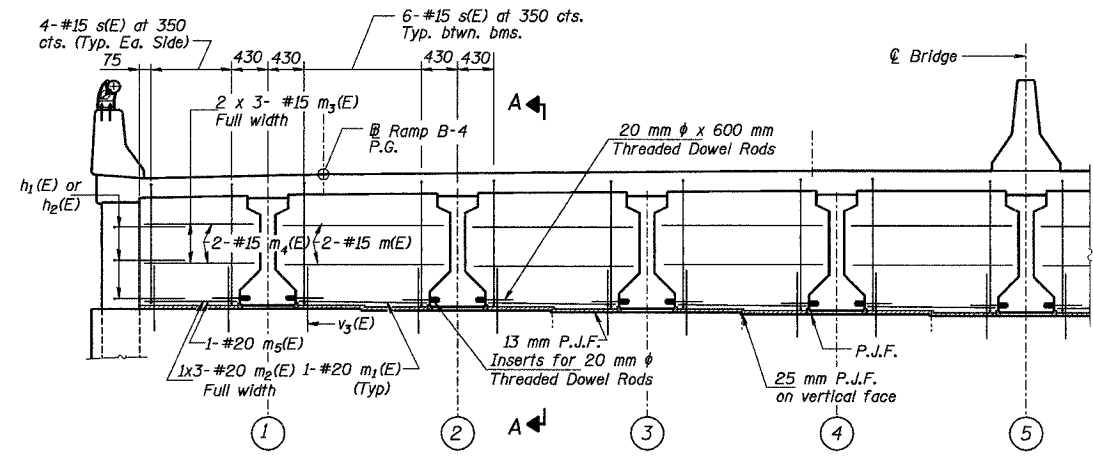


ROUTE NO.	SECT.	COUNTY	SHEET NO.	TOTAL SHEETS
F.A.I. 74	(72-7) R-3	PEORIA	453	1360
FED. ROAD DIST. NO. 7	ILLINOIS	FED. AID PROJECT	CONTRACT NO. 68200	

**ONE APPROACH SPAN  
BILL OF MATERIAL**

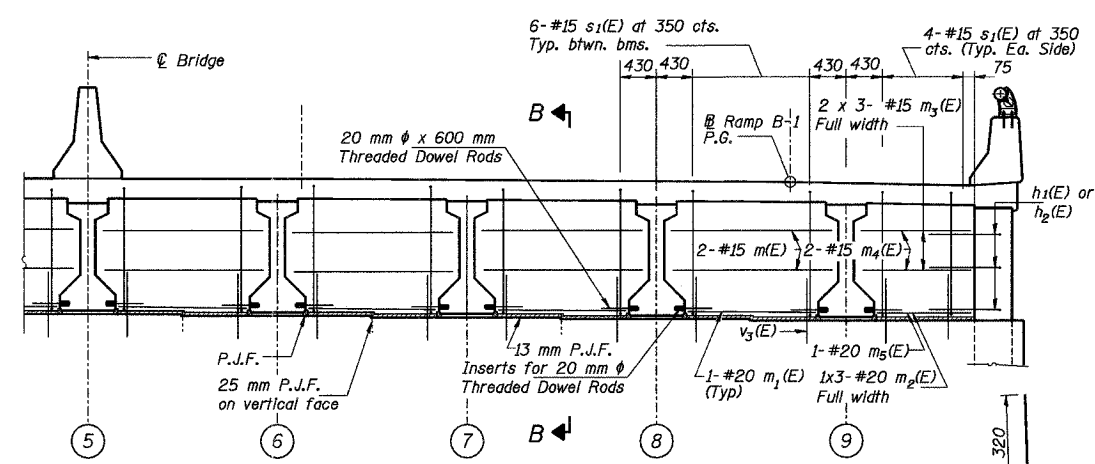
Bar No.	Size	Length (m)	Shape	
a(E)	#15	8.49	—	
a <sub>1</sub> (E)	#15	9.59	—	
a <sub>2</sub> (E)	#20	1.20	—	
a <sub>3</sub> (E)	#15	12.54	—	
a <sub>4</sub> (E)	#15	10.39	—	
a <sub>5</sub> (E)	#15	18.75	—	
a <sub>6</sub> (E)	#15	18.75	—	
b(E)	#15	6.60	—	
b <sub>1</sub> (E)	#15	9.56	—	
d(E)	#15	0.97	—	
d <sub>1</sub> (E)	#15	1.49	—	
d <sub>2</sub> (E)	#15	0.64	—	
d <sub>3</sub> (E)	#15	1.05	—	
d <sub>4</sub> (E)	6	#15	0.82	—
d <sub>5</sub> (E)	136	#15	1.01	—
d <sub>6</sub> (E)	68	#15	1.49	—
d <sub>7</sub> (E)	12	#15	1.34	—
e(E)	34	#15	5.99	—
e <sub>1</sub> (E)	18	#25	7.03	—
e <sub>2</sub> (E)	4	#15	1.37	—
e <sub>3</sub> (E)	17	#15	3.36	—
e <sub>4</sub> (E)	18	#15	6.57	—
e <sub>5</sub> (E)	17	#15	2.78	—
m(E)	32	#15	2.29	—
m <sub>1</sub> (E)	16	#20	1.76	—
m <sub>2</sub> (E)	6	#20	8.60	—
m <sub>3</sub> (E)	12	#15	8.50	—
m <sub>4</sub> (E)	8	#15	1.59	—
m <sub>5</sub> (E)	4	#20	1.29	—
s(E)	56	#15	2.85	—
s <sub>1</sub> (E)	56	#15	3.10	—
v <sub>20</sub> (E)	83	#15	0.90	—
Reinforcement Bars, Epoxy Coated		kg	12490	
Concrete Superstructure		m <sup>3</sup>	119.5	

Notes:  
 Reinforcement bars designated (E) shall be epoxy coated.  
 See sheets 8, 29, and 30 for v<sub>3</sub>(E) bars.  
 Work this sheet with sheet 8.  
 All dimensions are in millimeters (mm) except as noted.  
 Bars indicated thus 1x2-#15 etc. indicates 1 line of bars with 2 lengths per line.  
 For Section A-A & B-B, see sheet 8.



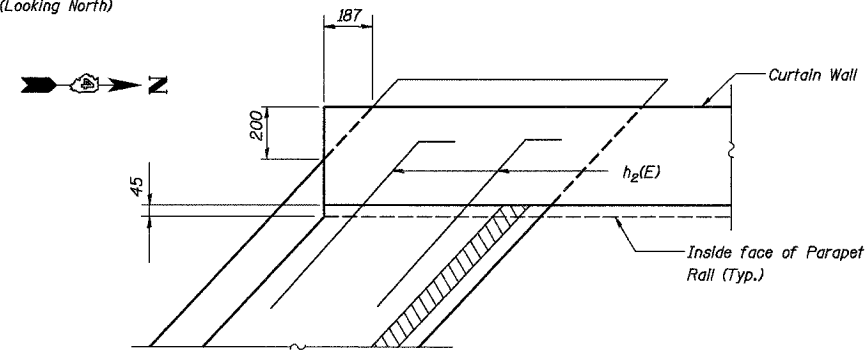
**DIAPHRAGM AT SOUTH APPROACH BENT**

For location of m(E), m<sub>1</sub>(E), m<sub>2</sub>(E), and m<sub>3</sub>(E) bars see Section A-A on sheet 8.  
 (Looking North)



**DIAPHRAGM AT SOUTH ABUTMENT**

For location of m(E), m<sub>1</sub>(E), m<sub>2</sub>(E), and m<sub>3</sub>(E) bars see Section B-B on sheet 8.  
 (Looking North)



**BAR d(E)**

**BAR d<sub>2</sub>(E)**

**BAR d<sub>1</sub>(E)**

**BAR d<sub>3</sub>(E)**

**BAR d<sub>5</sub>(E)**

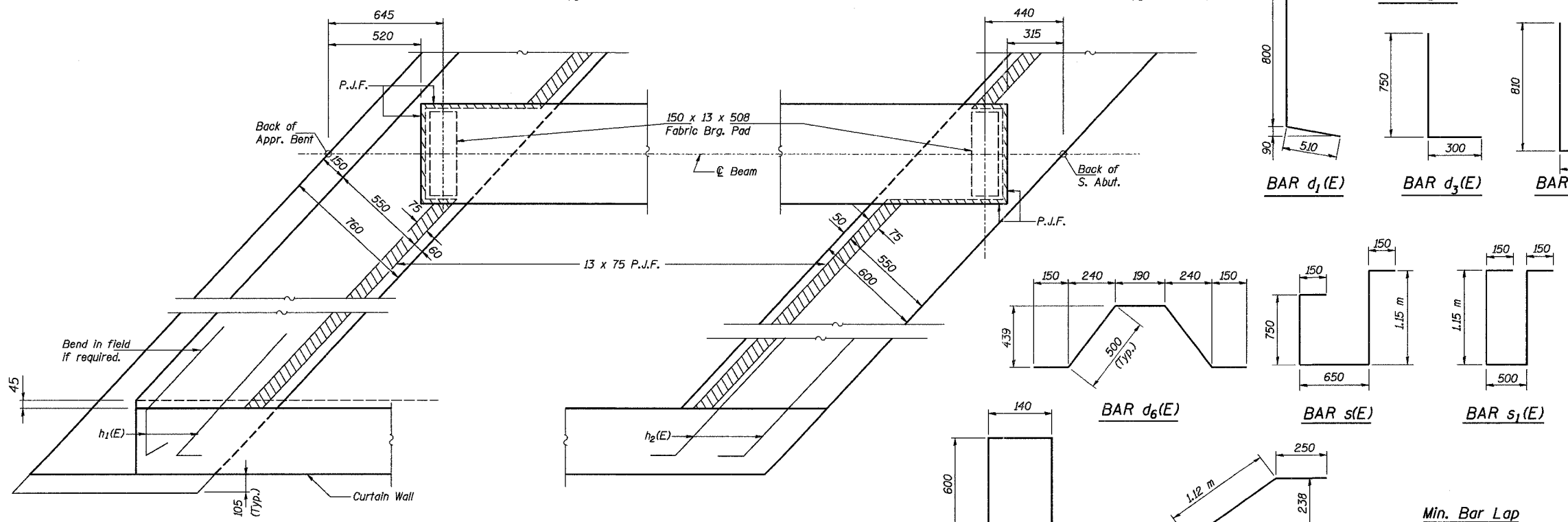
**BAR d<sub>6</sub>(E)**

**BAR s(E)**

**BAR s<sub>1</sub>(E)**

**BAR d<sub>7</sub>(E)**

**BAR e<sub>2</sub>(E)**



**PARTIAL PLAN**

Top of Appr. Bent and S. Abut. Diaphragm

Min. Bar Lap  
 #15 bar = 640  
 #20 bar = 790

Time: 10:37:41 AM Date: 11/19/2004 File name: F:\43996\struc\cur\072-0183\Sheet\Tracings\SD0000-1A0720183.dgn

Designed by: DL  
 Checked by: AK  
 Drafted by: FTE/JMG  
 Checked by: AK

REVISION	DATE	DESCRIPTION
STATE OF ILLINOIS DEPARTMENT OF TRANSPORTATION		
DIAPHRAGM DETAILS - SPAN 1		
RAMPS B-1 AND B-4 OVER F.A.I. ROUTE 74 (I-74) RAMPS A-3 AND B-3 F.A.I. ROUTE 74 SECTION (72-7) R-3 PEORIA COUNTY STATION 10+779.03 STRUCTURE NUMBER 072-0183		
PARSONS TRANSPORTATION GROUP CHICAGO, ILLINOIS		
DRAWING NO. 10	SCALE N.T.S.	DATE 2-18-03
		SHEET NO. 10