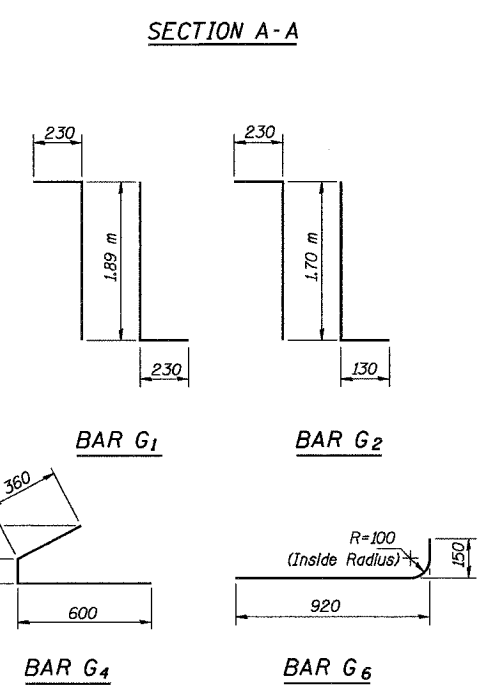
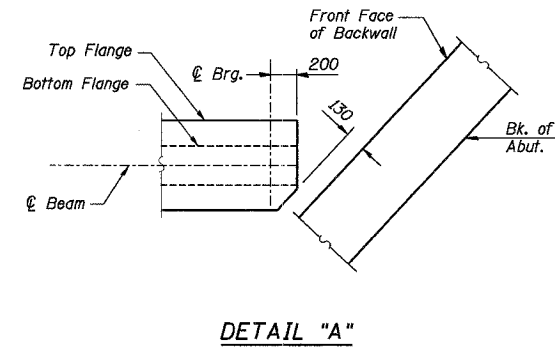
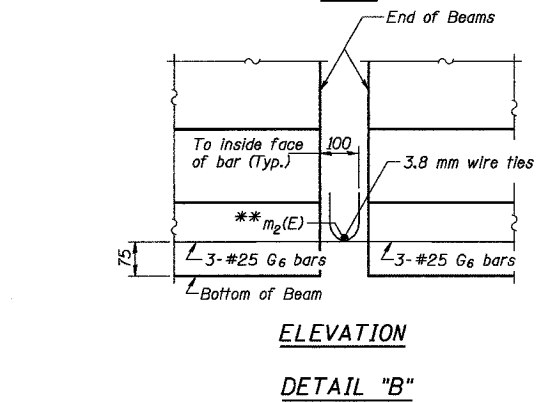
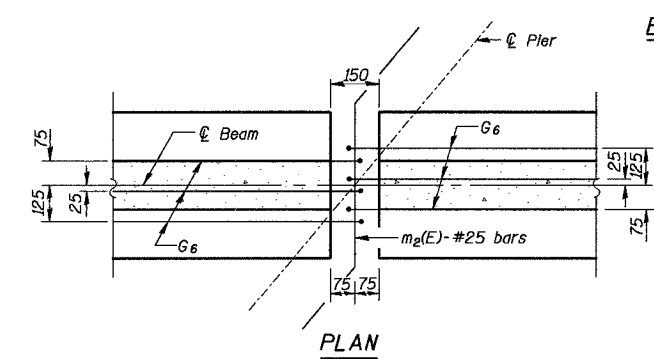
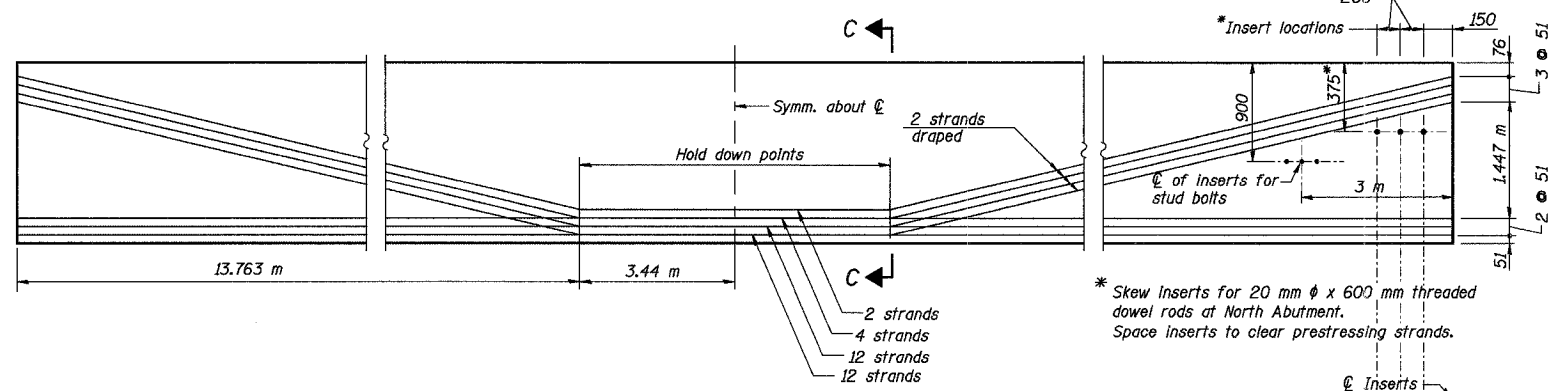
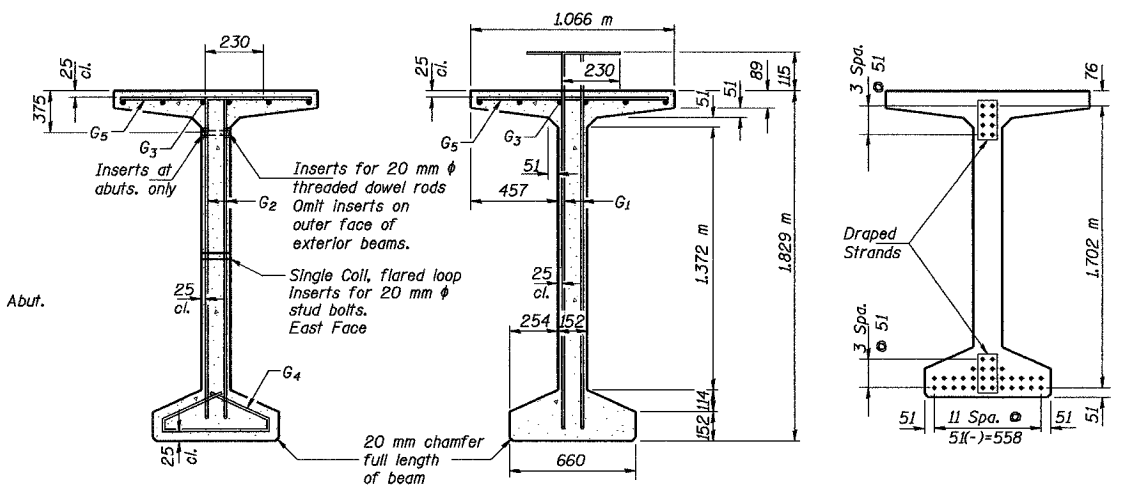
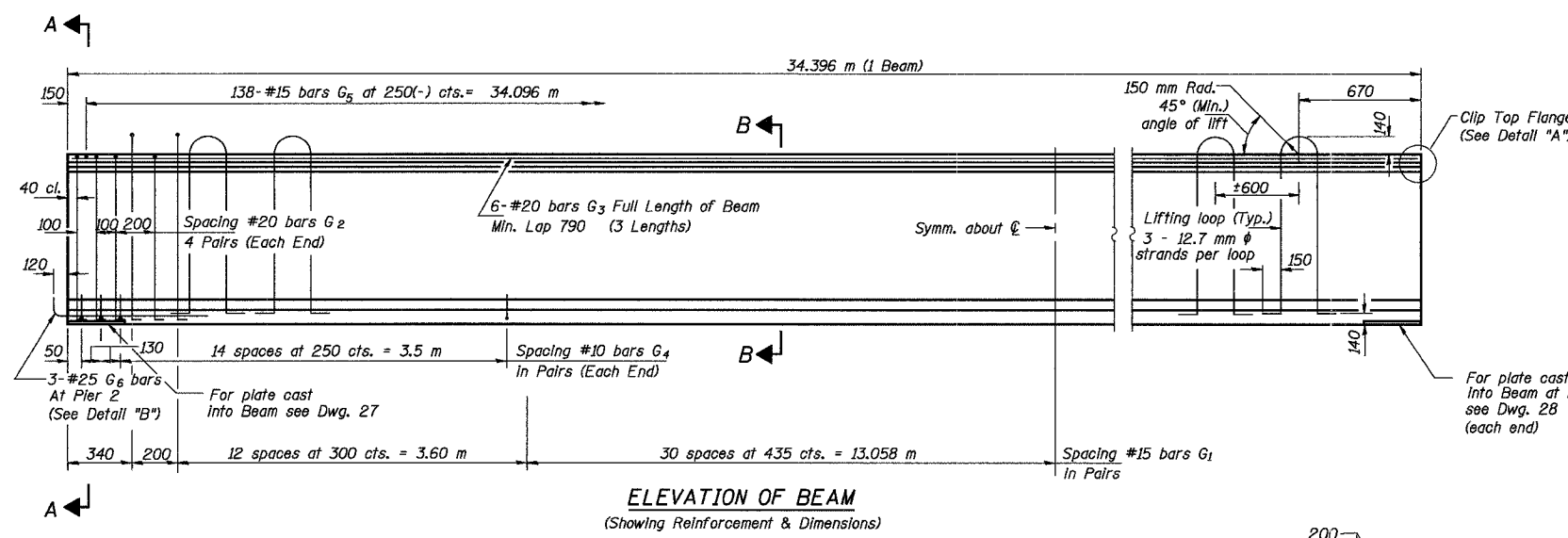


ROUTE NO.	SECT.	COUNTY	SHEET NO.	TOTAL SHEETS
F.A.I. 74	(72-7) R-3	PEORIA	7/66	13/60
FED. ROAD DIST. NO. 7		ILLINOIS	FED. AID PROJECT	

CONTRACT NO. 68200



*** BAR LIST**

Bar	No.	Size	Length (m)	Shape
G1	174	#15	2.35	TL
G2	16	#20	2.06	TL
G3	18	#20	12.00	TL
G4	68	#10	1.07	TL
G5	138	#15	1.01	TL
G6	3	#25	1.07	TL

* For one beam only.

BILL OF MATERIAL

Item	Unit	Total
Furnishing and Erecting Precast Prestressed Concrete Bulb T-Beams, 1829 mm	m	34.40

- Notes:**
- All inserts and threaded dowel rods for inserts, reinforcing and Prestressing Steel, and other items which are cast into the Precast Concrete Bulb T-Beams shall be included in the contract unit price per meter of "Furnishing and Erecting Precast Prestressed Concrete Bulb T-Beams, 1829 mm".
 - Inserts for 20 mm ϕ threaded dowel rods are to be two strut, coil type for interior beams and single coil, flared loop type for exterior beams.
 - Prestressing steel shall be uncoated high strength, low relaxation 7-wire strand ($F_u = 1860$ MPa). The nominal diameter shall be 12.7 mm and the nominal cross-sectional area shall be 98.71 mm².
 - Required release strength, f'_{ci} , shall be 35 MPa.
 - Non-prestressing steel shall conform to AASHTO designation M 31M, M 42M or M 53M Grade 400.
 - Reinforcement bars designated (E) shall be epoxy coated.
 - Lifting loops shall be 3 - 12.7 mm ϕ strands ($F_u = 1860$ MPa), as shown.
 - All dimensions are in millimeters (mm) except as noted.

REVISION	DATE	DESCRIPTION	
STATE OF ILLINOIS DEPARTMENT OF TRANSPORTATION 1829 mm PPC BULB T-BEAM - FLARED BEAM NO. 10 SPAN 4 RAMPS B-1 AND B-4 OVER F.A.I. ROUTE 74 (I-74) RAMPS A-3 AND B-3 F.A.I. ROUTE 74 SECTION (72-7) R-3 PEORIA COUNTY STATION 10+779.03 STRUCTURE NUMBER 072-0183 PARSONS TRANSPORTATION GROUP CHICAGO, ILLINOIS			
DRAWING NO.	SCALE	DATE	SHEET NO.
23	N.T.S.	2-18-03	23

Date: 1/19/2004
 Time: 10:03:32 AM
 File: P:\643996\Structure\072-0183\Sheet\Tracings\SD00008-10720183.dgn

Designed by: AMK
 Checked by: WEE
 Drafted by: FTE/JMG
 Checked by: WEE

** Tie #25 $m_2(E)$ with 3.8 mm wire tightly fastened to prevent any movement between bars.