

ROUTE NO.	SECT.	COUNTY	SHEET NO.	TOTAL SHEETS
F.A.I. 74	(72-7) R-3	PEORIA	53	126
FED. ROAD DIST. NO. 7		ILLINOIS	FED. AID PROJECT	

CONTRACT NO. 68200

GENERAL NOTES

- Reinforcement bars shall conform to the requirements of AASHTO M 31M or M 322M Grade 420.
- All dimensions are in millimeters (mm) except as noted.
- Layout of Rip-Rap may be varied in the field to suit ground conditions as directed by the Engineer.
- Precast culvert alternate is not allowed in areas where Cast-In-Place culvert is specified.
- All construction joints shall be bonded.

INDEX OF SHEETS

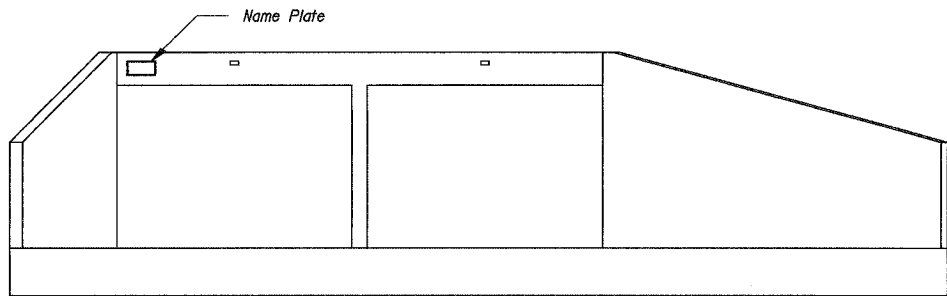
- General Plan and Longitudinal Section
- General Notes, Index of Sheets, Total Bill of Material, Misc. Details
- Construction Staging 2A
- Construction Staging 3A
- Culvert Plan and Section I
- Culvert Plan and Section II
- Culvert Plan and Section III
- Culvert Plan and Section IV
- Culvert Plan and Section V
- Culvert Plan and Section VI
- Details - Settlement Collars and C.I.P. to Precast Connection
- Bar Details and Bills of Material
- Boring Logs I
- Boring Logs II
- Boring Logs III
- Boring Logs IV

WATERWAY INFORMATION

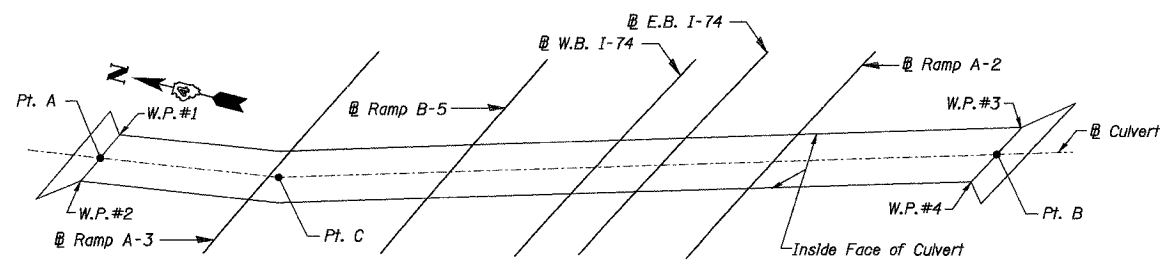
Drainage Area = 4,425 km² Low Grade Elev. 192.00 m @ Sta. 143+400

Flood	Freq. Yr.	Q cms	Opening Sq. m		Nat. H.W.E. m	Head - m		Headwater Elev. - m	
			Exist.	Prop.		Exist.	Prop.	Exist.	Prop.
Design	50	76.0	12	22	187.18	5.73	1.01	191.96	188.19
Base	100	85.0	12	22	187.27	5.79	1.31	192.15	188.58
Overtopping	50+	76.0	12	-	-	5.76	-	191.99	-
Max. Calc.	500	99.0	-	22	187.42	-	1.86	-	189.28

* Upstream Face of Culvert

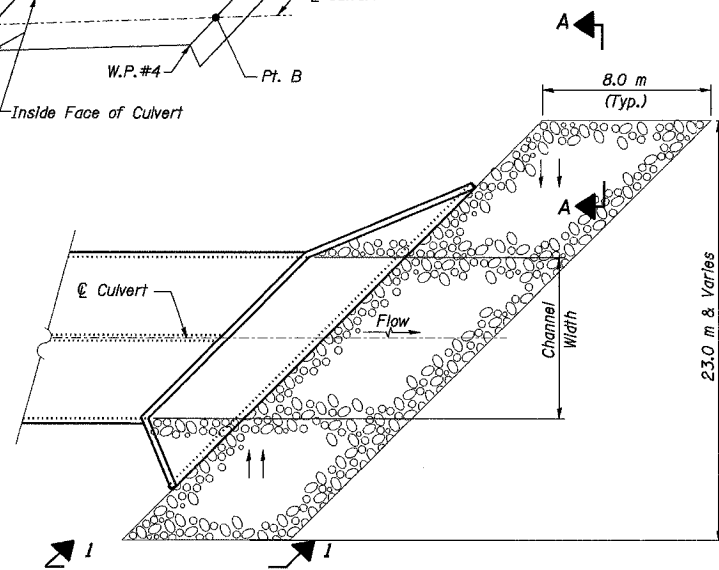


NAME PLATE LOCATION
Downstream End Only

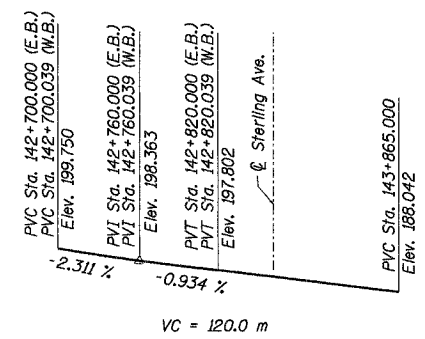


GEOMETRIC CONTROL POINTS

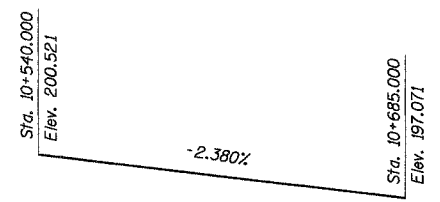
Point	Baseline	Sta.	Offset	@ Culvert Sta.
A	A-2	10+395.826	76.904 m LT	10+000.000
	A-3	10+578.361	21.025 m RT	10+000.000
B	A-2	10+483.461	23.838 m RT	10+135.000
	A-3	10+483.224	77.898 m LT	10+135.000
C	A-2	10+563.210	1.239 m LT	10+027.000
	A-3	10+409.907	54.375 m LT	10+027.000



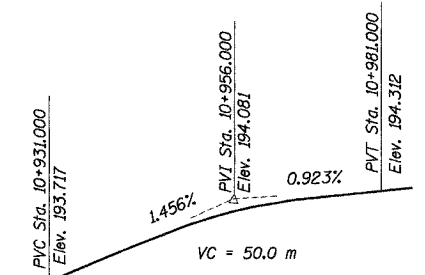
RIP-RAP PLAN
Downstream end (Upstream similar)



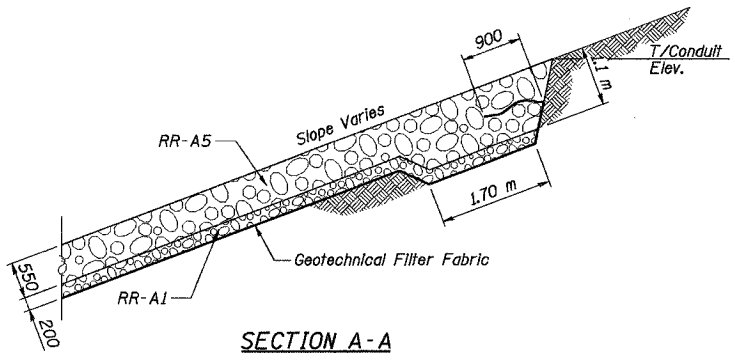
PROFILE GRADE E.B. & W.B. I-74



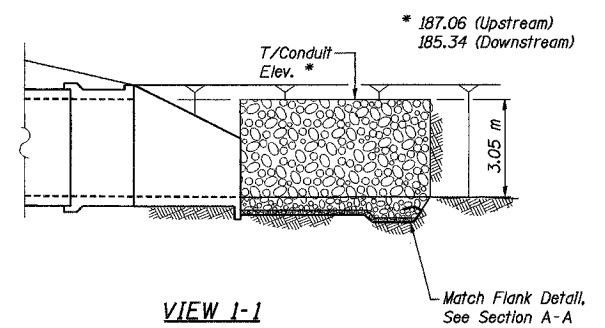
PROFILE GRADE RAMP A-3



PROFILE GRADE RAMP B-5



SECTION A-A
Flank Detail



VIEW I-1

TOTAL BILL OF MATERIAL

ITEM	UNIT	STAGE 2A	STAGE 3A
Name Plates	Each	1	0
Box Culvert End Sections	Each	1	0
Stone Riprap, Class A5	m ²	227	222
Filter Fabric for Use with Riprap	m ²	227	222
Concrete Headwall Removal	m ³	28.5	28.5
Pipe Culvert Removal	m	14.0	87.2
Reinforcement Bars	kg	0	109,260
Precast Concrete Box Culvert 3.6 m x 3.0 m	m	11.0	55.0
Concrete Box Culverts	m ³	0	772.5
Temporary Mechanically Stabilized Earth Retaining Wall	m ²	280.2	0
Temporary Soil Retention System	m ²	188.2	0

CURVE DATA

Ramp A-2 Curve 121	Ramp B-5 Curve 254
P.I. = 10+424.256	P.I. = 11+147.717
I = 9° 12' 07"	I = 20° 10' 21"
D = 4° 58' 26"	D = 4° 50' 28"
R = 1151.902 m	R = 183.526 m
L = 185.000 m	L = 416.689 m
T = 92.699 m	T = 210.524 m
E = 3.724 m	E = 18.578 m
PC = 10+331.557	PC = 10+937.193
PT = 11+516.557	PT = 11+353.882
SE = 4.300%	SE = -4.300%

E.B. F.A.I. Route 74 Curve 1003	W.B. F.A.I. Route 74 Curve 2003
P.I. = 144+278.918	P.I. = 144+287.337
I = 100° 30' 47"	I = 100° 30' 47"
D = 4° 55' 05"	D = 4° 53' 19"
R = 1165.000 m	R = 1172.000 m
L = 2043.743 m	L = 2056.022 m
T = 1401.087 m	T = 1409.506 m
E = 657.161 m	E = 661.110 m
PC = 142+877.831	PC = 142+877.831
PT = 144+921.574	PT = 144+933.854
SE = 4.300%	SE = 4.300%

Ramp A-3 Curve 132

P.I. = 10+658.632
I = 14° 36' 00"
D = 4° 45' 17.29"
R = 1205.001 m
L = 307.058 m
T = 154.365 m
E = 9.847 m
PC = 10+504.267
PT = 10+811.325
SE = -1.5%

REVISION	DATE	DESCRIPTION	
STATE OF ILLINOIS DEPARTMENT OF TRANSPORTATION GENERAL NOTES, INDEX OF SHEETS, TOTAL BILL OF MATERIAL, MISC. DETAILS F.A.I. ROUTE 74 (I-74) OVER DRY RUN CREEK F.A.I. ROUTE 74 SEC. (72-7)R-3 PEORIA COUNTY STA. 143+305.339 (E.B. I-74) STRUCTURE NUMBER 072-2032 PARSONS TRANSPORTATION GROUP CHICAGO, ILLINOIS			
DRAWING NO.	SCALE	DATE	SHEET NO.
2	N.T.S.	6/30/03	2

Date: 11/22/2004
 Time: 11:49:45 AM
 File: P:\643996\struc\final\plans\contract\10\GND000-1\072-2032\sheet\Final Plans\Contract\10\GND000-1\072-2032.dgn

Designed by: WEE
 Checked by: AK
 Drafted by: JV
 Checked by: AK