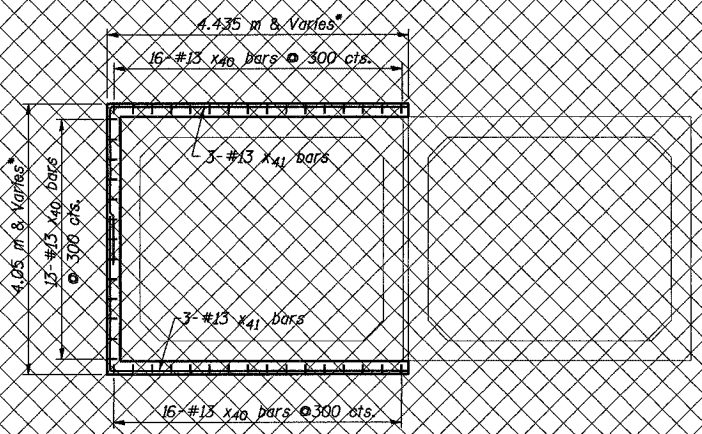


ROUTE NO.	SECT.	COUNTY	SHEET NO.	TOTAL SHEETS
F.A.I. 74	(72-7) R-3	PEORIA	562	1360
FED. ROAD DIST. NO. 7	ILLINOIS	FED. AID PROJECT		

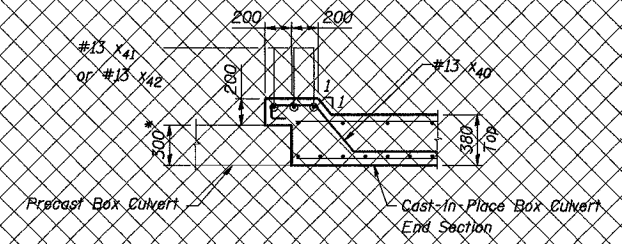
CONTRACT NO. 68200

Date: 11/22/2004 Time: 14:43:42 AM

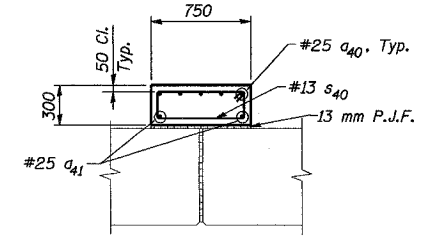
Filename: P:\643996\Structural\A3\072-2032\sheet\Final Plans\Contract #10.SD000-1A072032.dgn



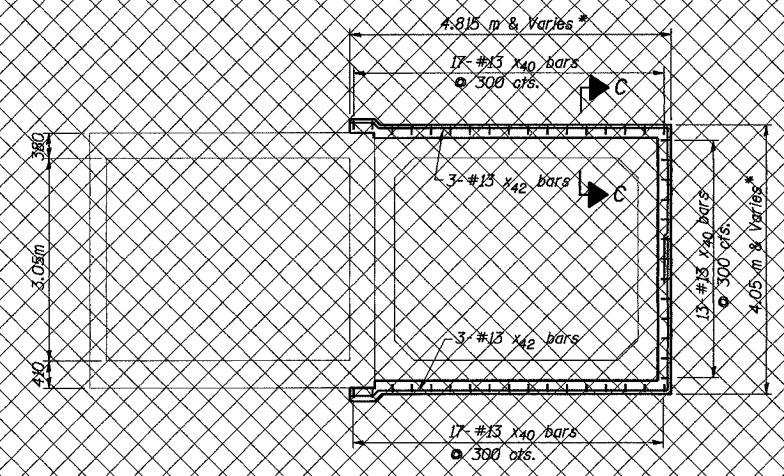
SECTION A-A



SECTION C-C

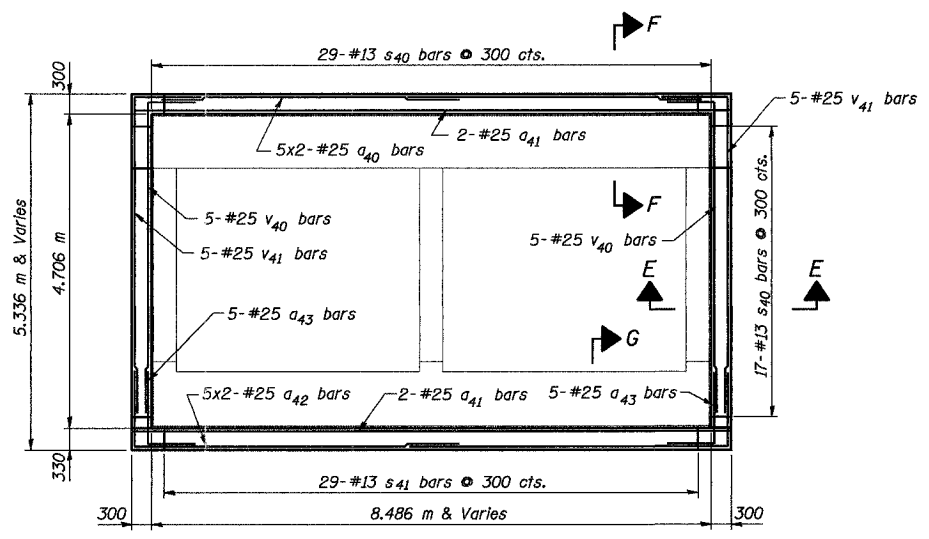


SECTION F-F

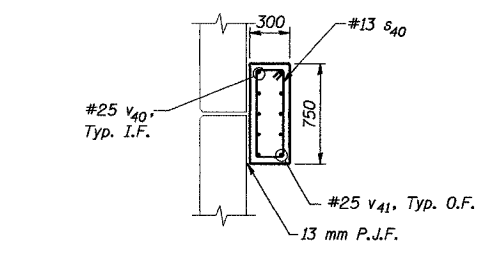


SECTION B-B

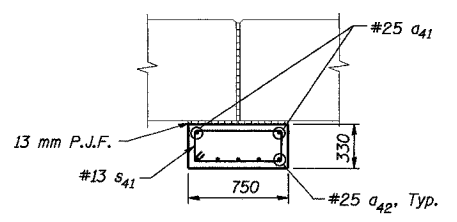
* Dimensions assume Precast Box Wall Thickness = 250 mm and Slab Thickness 300 mm. Final thickness to be determined by precast supplier.



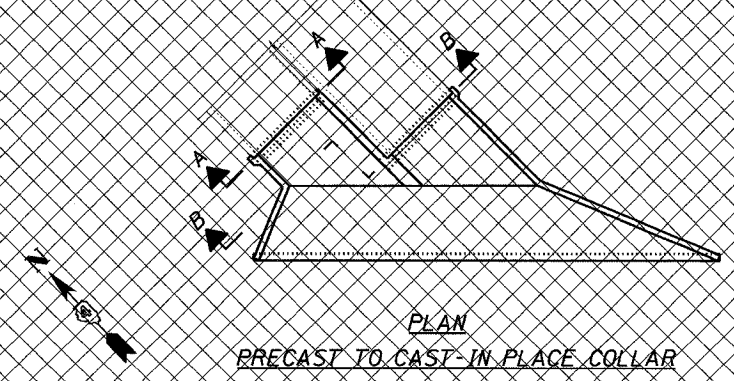
SECTION D-D



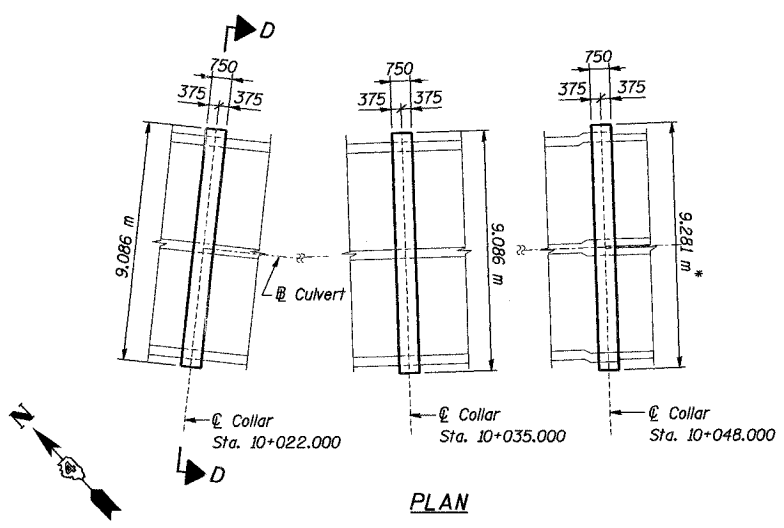
SECTION E-E



SECTION G-G



PLAN
PRECAST TO CAST-IN-PLACE COLLAR



PLAN
SETTLEMENT COLLARS

LAP LENGTHS
#13 - 440
#25 - 1,190 m

Notes:

Bars indicated thus 20x3-#15 etc. indicates 20 lines of bars with 3 lengths per line.

All Stations are measured along @ Culvert.

For Bar Details and Bill of Material see Sheet 12.

REVISION	DATE	DESCRIPTION
STATE OF ILLINOIS DEPARTMENT OF TRANSPORTATION		
DETAILS - SETTLEMENT COLLARS AND C.I.P. TO PRECAST CONNECTION		
F.A.I. ROUTE 74 (I-74) OVER DRY RUN CREEK F.A.I. ROUTE 74 SEC. (72-7)R-3 PEORIA COUNTY STA. 143+305.339 (E.B. I-74) STRUCTURE NUMBER 072-2032		
PARSONS TRANSPORTATION GROUP CHICAGO, ILLINOIS		
DRAWING NO. 11	SCALE N.T.S.	DATE 6/30/03
		SHEET NO. 11

Designed by: WEE
Checked by: AK
Drafted by: JMG
Checked by: AK