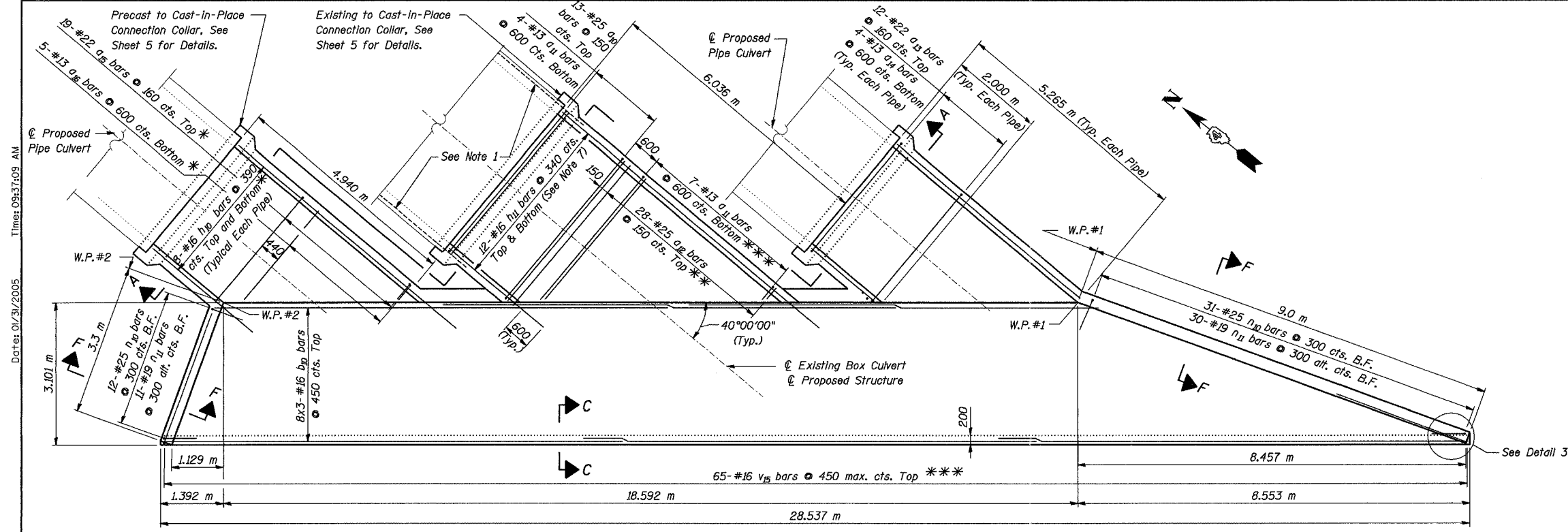
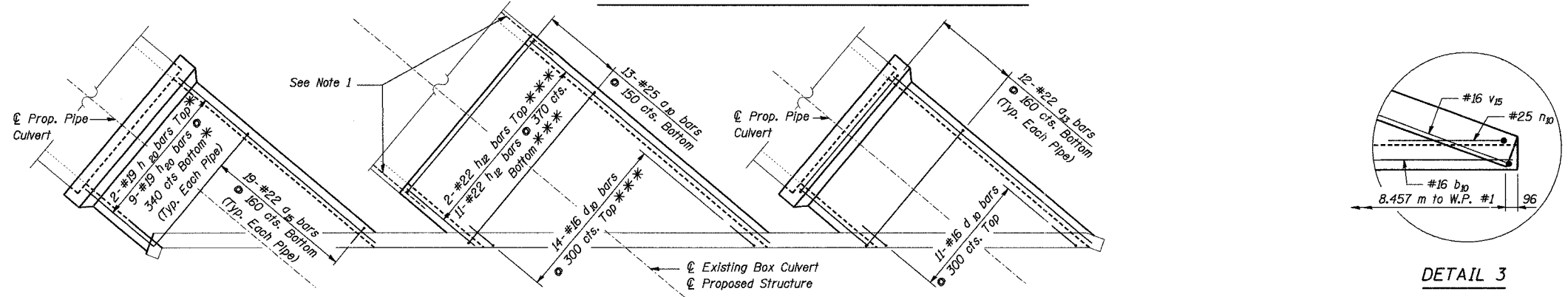


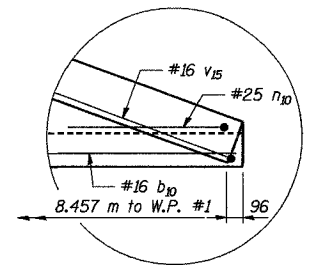
ROUTE NO.	SECT.	COUNTY	SHEET NO.	TOTAL SHEETS
F.A.I. 74	(72-7) R-3	PEORIA	571	1360
FED. ROAD DIST. NO. 7	ILLINOIS	FED. AID PROJECT	CONTRACT NO. 68200	



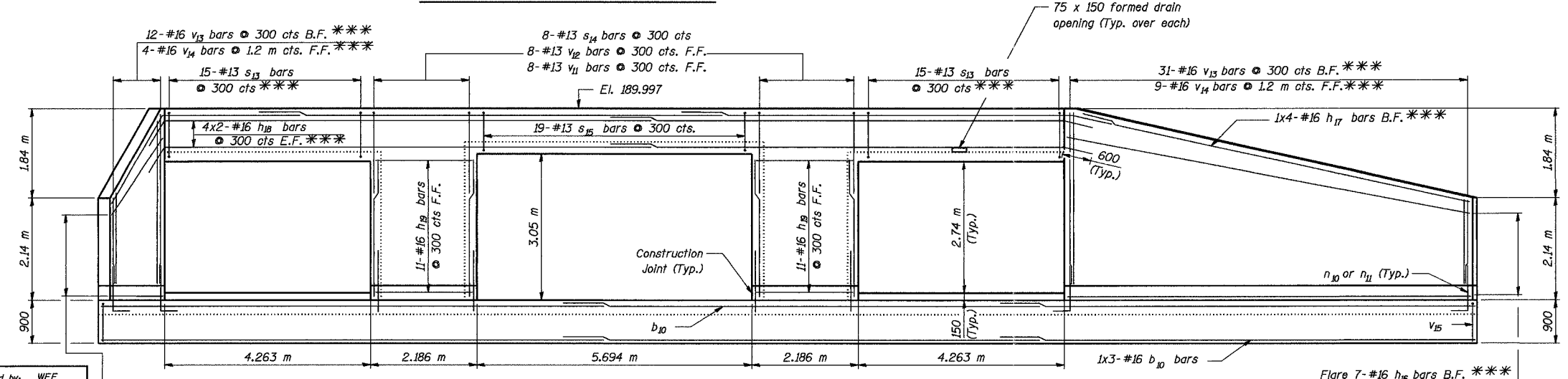
PLAN - BOTTOM SLAB AND PIPE REINFORCEMENT



PLAN - TOP SLAB REINFORCEMENT



DETAIL 3



ELEVATION

MIN. BAR LAP

#13 Bar - 550
#16 Bar - 680

- * Order reinforcement bars full length. Cut to fit skew and use remaining bars in other pipe. See Section A-A on Sheet 6 for bar placement.
- ** Order reinforcement bars full length. Cut to fit skew and use remaining bars in top slab. See Section A-A on Sheet 6 for bar placement.
- *** Cut or Bend In Field

- Notes:
1. Extend existing longitudinal reinforcement (600 mm min.) into new culvert barrel (See Section 501 of Standard Specifications).
 2. For culvert wall reinforcement and details see Sheets 5 and 6.
 3. For Sections A-A, C-C and F-F, see Sheet 6.
 4. All dimensions are in millimeters (mm) except as noted.
 5. Bars indicated thus 20x3-#16 etc. indicates 20 lines of bars with 3 lengths per line.
 6. B.F. = Back Face
F.F. = Front Face
E.F. = Each Face
 7. For Cutting Diagram and Bar Placement, see Sheet 6.

REVISION	DATE	DESCRIPTION
STATE OF ILLINOIS DEPARTMENT OF TRANSPORTATION		
SOUTH HEADWALL		
WAR MEMORIAL DRIVE OVER DRY RUN CREEK F.A.I. ROUTE 74 SEC. (72-7)R-3 PEORIA COUNTY STA. 39+899.517 (U.S. 150) STRUCTURE NUMBER 072-2504		
PARSONS TRANSPORTATION GROUP CHICAGO, ILLINOIS		
DRAWING NO.	SCALE	DATE
4	N.T.S.	11/4/04
SHEET NO.		4

Date: 01/31/2005 Time: 09:37:09 AM
 File name: F:\643996\Structure\072-2029-culvert\sheet\tracings 2\RED003-1A072-2504.dgn
 Designed by: WEE
 Checked by: AK
 Drafted by: RKS
 Checked by: AK