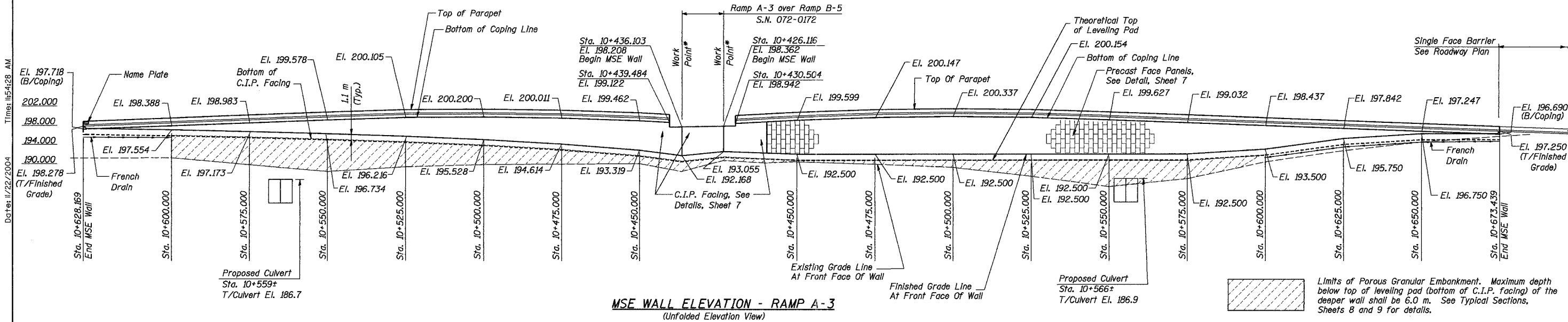


B.M. TP1316 : PK Wall on S. Side of F.A. 49 (U.S.150 Spur) Bridge over I-74 West of I-74 on Ramp. Elevation 194.293 m  
 B.M. 7A : Chiseled "L" on South End of Parapet Wall Southwest Corner of I-74 Ramps over U.S. 150 (S.N. 072-0026). Elevation 199.790  
 Existing Structure: None  
 Construction Staging: To be constructed with W.B. I-74 (Stage 3). There is no existing ramp and no traffic detouring will be necessary.

ROUTE NO.	SECT.	COUNTY	SHEET NO.	TOTAL SHEETS
F.A.I. 74	(72-7) R-3	PEORIA	577	1360
FED. ROAD DIST. NO. 7		ILLINOIS	FED. AID PROJECT	

CONTRACT NO. 68200



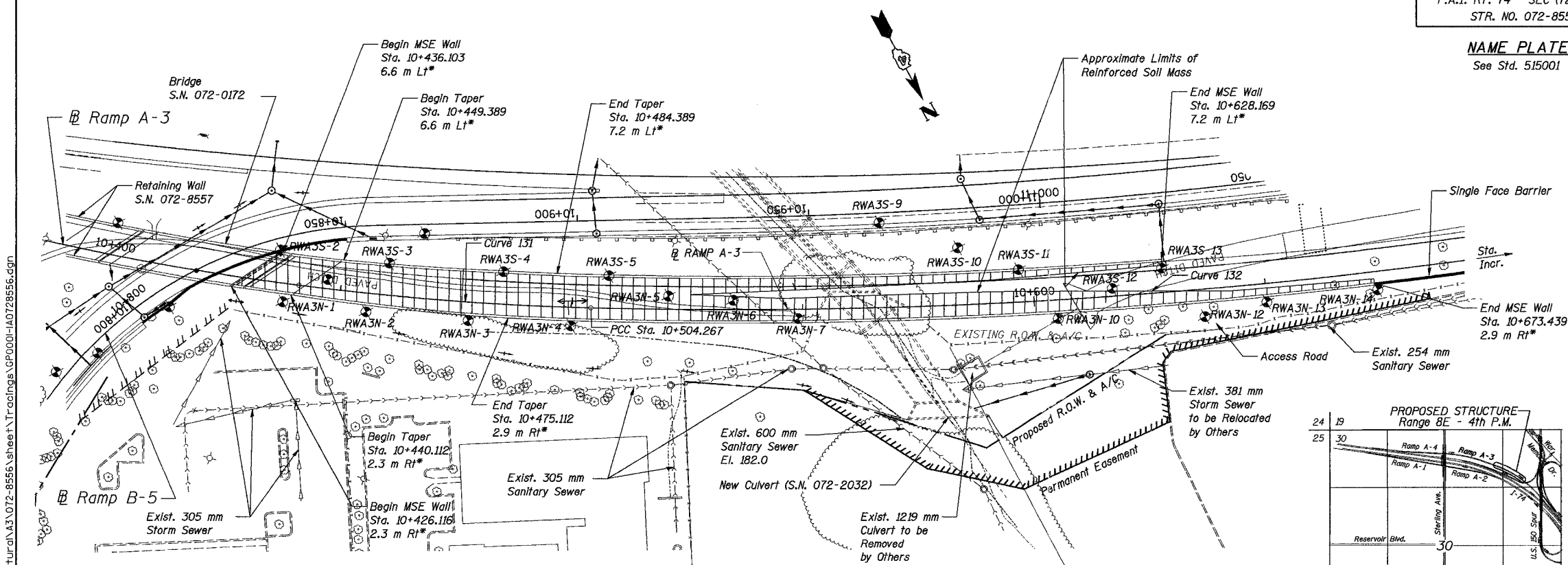
Limits of Porous Granular Embankment. Maximum depth below top of leveling pad (bottom of C.I.P. facing) of the deeper wall shall be 6.0 m. See Typical Sections, Sheets 8 and 9 for details.

STA. 10+426.116 - STA. 10+673.439  
 BUILT 200\_ BY  
 STATE OF ILLINOIS  
 F.A.I. RT. 74 SEC (72-7)R-3  
 STR. NO. 072-8556

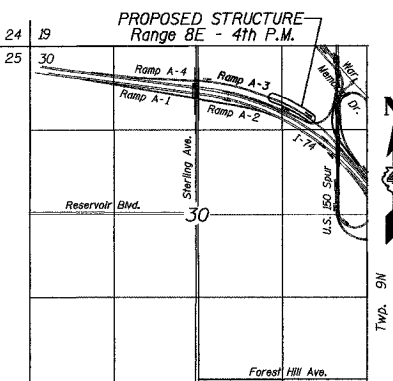
**DESIGN SPECIFICATIONS**  
 2002 AASHTO Standard Specifications

**DESIGN STRESSES**  
 FIELD UNITS  
 $f'c = 24 \text{ MPa}$   
 $f_y = 400 \text{ MPa (Reinf.)}$

**NAME PLATE**  
 See Std. 515001



**PLAN**



**LOCATION SKETCH**

Designed by: WEE  
 Checked by: AK/CTJ  
 Drafted by: RKS  
 Checked by: AK/CTJ

\* Offsets refer to Ramp A-3 at @ Wall.  
 See Sheet 2 for location of Work Points

REVISION	DATE	DESCRIPTION
STATE OF ILLINOIS DEPARTMENT OF TRANSPORTATION		
GENERAL PLAN AND ELEVATION		
MSE WALL NO. 8 - RAMP A-3 F.A.I. ROUTE 74 SECTION (72-7) R-3 PEORIA COUNTY STA. 10+426.116 TO STA. 10+673.439 (RAMP A-3) STRUCTURE NUMBER 072-8556		
PARSONS TRANSPORTATION GROUP CHICAGO, ILLINOIS		
DRAWING NO.	SCALE	DATE
1	N.T.S.	6-25-04
SHEET NO.		
1		