

ROUTE NO.	SECT.	COUNTY	SHEET NO.	TOTAL SHEETS
F.A.I. 74	(72-7) R-3	PEORIA	600	1360
FED. ROAD DIST. NO. 7	ILLINOIS	FED. AID PROJECT	CONTRACT NO. 68200	

GENERAL NOTES

1. Reinforcement bars shall conform to the requirements of AASHTO M 31M or M 322M Grade 400.
2. All dimensions are in millimeters (mm) except as noted.
3. See Special Provisions for Mechanically Stabilized Earth Retaining Wall design and construction requirements.
4. The MSE Wall Supplier's Internal stability design shall account for the anchorage slab bearing pressure surcharge and a horizontal sliding force of 7.3 kN/m of wall.
5. All construction joints shall be bonded.

INDEX OF SHEETS

- | | |
|---|---------------------------------|
| 1. General Plan and Elevation | 6. Aesthetic Details |
| 2. General Notes, Total Bill of Material, Misc. Details | 7. Typical Sections and Details |
| 3. Anchorage Slabs and Parapets | 8. Boring Logs I |
| 4. Anchorage Slabs and Parapet Reinforcing Detail I | 9. Boring Logs II |
| 5. Anchorage Slab and Parapet Reinforcing Details II | |

TOTAL BILL OF MATERIAL

ITEM	UNIT	TOTAL
Name Plates	Each	1
Removal and Disposal of Unsuitable Material	m ³	218
Porous Granular Embankment	m ³	218
Concrete Structures	m ³	50.8
Concrete Superstructure	m ³	16.5
Reinforcement Bars, Epoxy Coated	kg	5490
French Drains	m ³	13.1
Form Liner Limestone Surface	m ²	69
Form Liner Grid and Fin Surface	m ²	39
Mechanically Stabilized Earth Retaining Wall with C.I.P. Facing	m ²	172

CURVE DATA

RAMP A-3 - CURVE 131

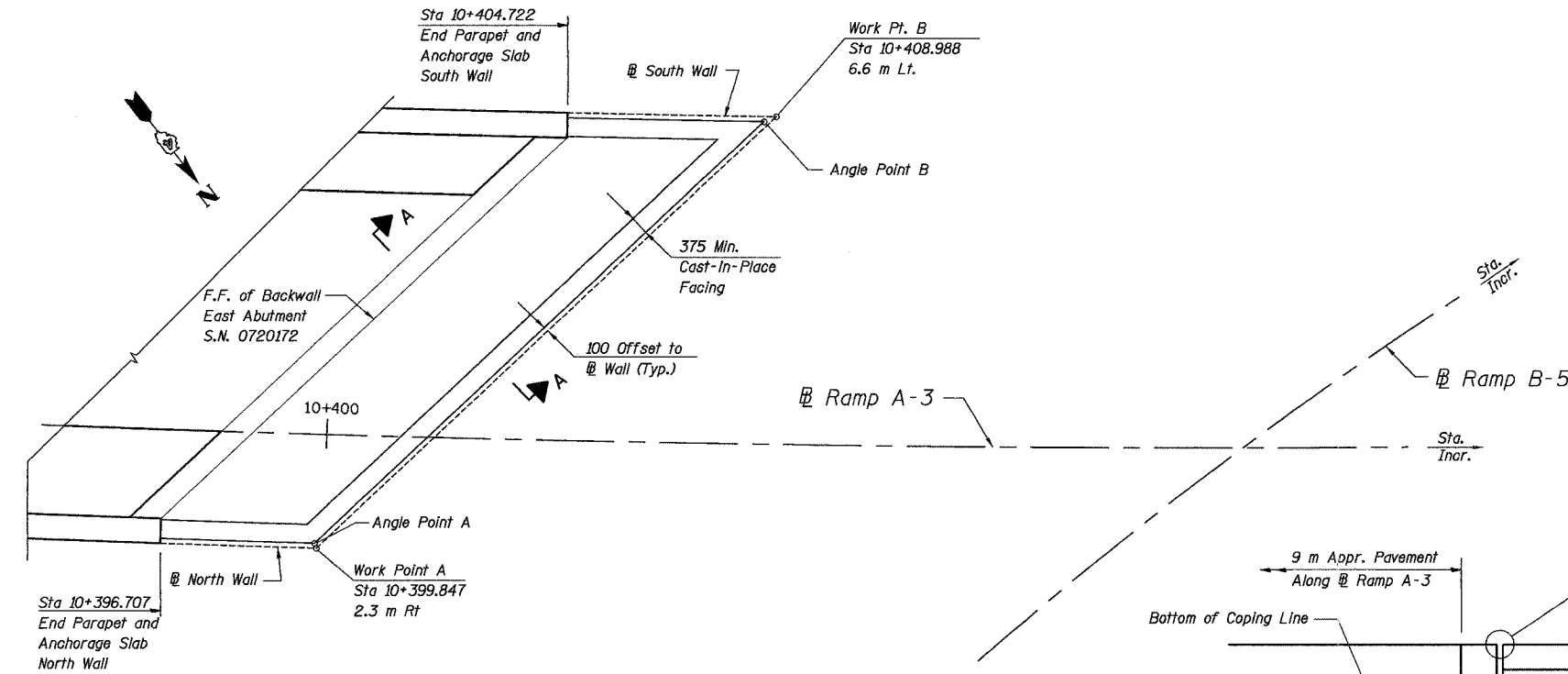
R = 605,000 m
T = 63.526 m
L = 126.588 m
E = 3,326 m
PC STA = 10+377.679
PI STA = 10+441.205
PT STA = 10+504.267
S.E. = -3.4%
Transition In N/A
Transition out Sta. 10+499 to Sta. 10+504

RAMP B-5 - CURVE 253

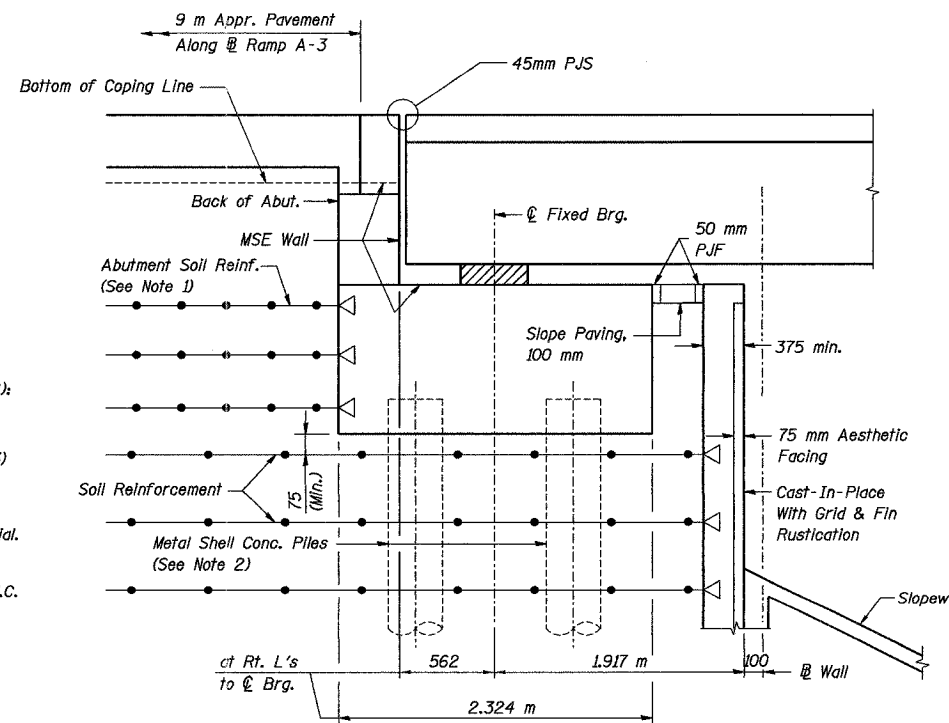
R = 88,000 m
T = 133.370 m
L = 173.809 m
E = 71,786 m
PC STA = 10+681.815
PI STA = 10+815.184
PT STA = 10+855.624
S.E. = 7.9%
Transition In Sta. 10+650 to Sta. 10+698
Transition out Sta. 10+840 to Sta. 10+888

W.B. I-74 - CURVE 2003

R = 1172,000 m
T = 1409.506 m
L = 2056.022 m
E = 661.110 m
PC STA = 142+877.831
PI STA = 144+287.337
PT STA = 144+933.854
S.E. = 4.3%
Transition In Sta. 142+821 to Sta. 142+900
Transition out Sta. 144+906 to Sta. 144+988



PLAN (SHOWING WORKING POINTS)
(For Abut. and wall dimensions, see Plan Sheet 7)



SECTION A-A

Notes on East Abutment (Structure Number 072-0172):

1. The MSE Wall Supplier to design the abutment soil reinforcement to resist a horizontal force of 30 kN/m of abutment (parallel to Ramp A-3) and 21 kN/m of abutment (perpendicular to Ramp A-3)
2. Precore Piles to 3.0 m below base of MSE Material. Piles must be driven prior to placement of MSE. Coat Piles above existing ground with 6 mm min. thickness of either asphaltic cement or S.C. or M.C. liquid asphalt. (See S.N. 072-0172)

REVISION	DATE	DESCRIPTION
STATE OF ILLINOIS DEPARTMENT OF TRANSPORTATION		
GENERAL NOTES, TOTAL BILL OF MATERIAL, MISC. DETAILS		
MSE WALL NO. 8A - RAMP A-3 F.A.I. ROUTE 74 SECTION (72-7)R-3 PEORIA COUNTY STA. 10+362.421 TO STA 10+408.988 (RAMP A-3) STRUCTURE NUMBER 072-8557		
PARSONS TRANSPORTATION GROUP CHICAGO, ILLINOIS		
DRAWING NO. 2	SCALE N.T.S.	DATE 6/25/04
		SHEET NO. 2

Designed by: WEE/EI
Checked by: AK
Drafted by: ET
Checked by: AK

Time: 12:45:58 PM

Date: 11/22/2004

Filename: P:\643996\structural\072-8557-Wall\8A\sheet\TR-acings\GP0002-1A0728557.dgn