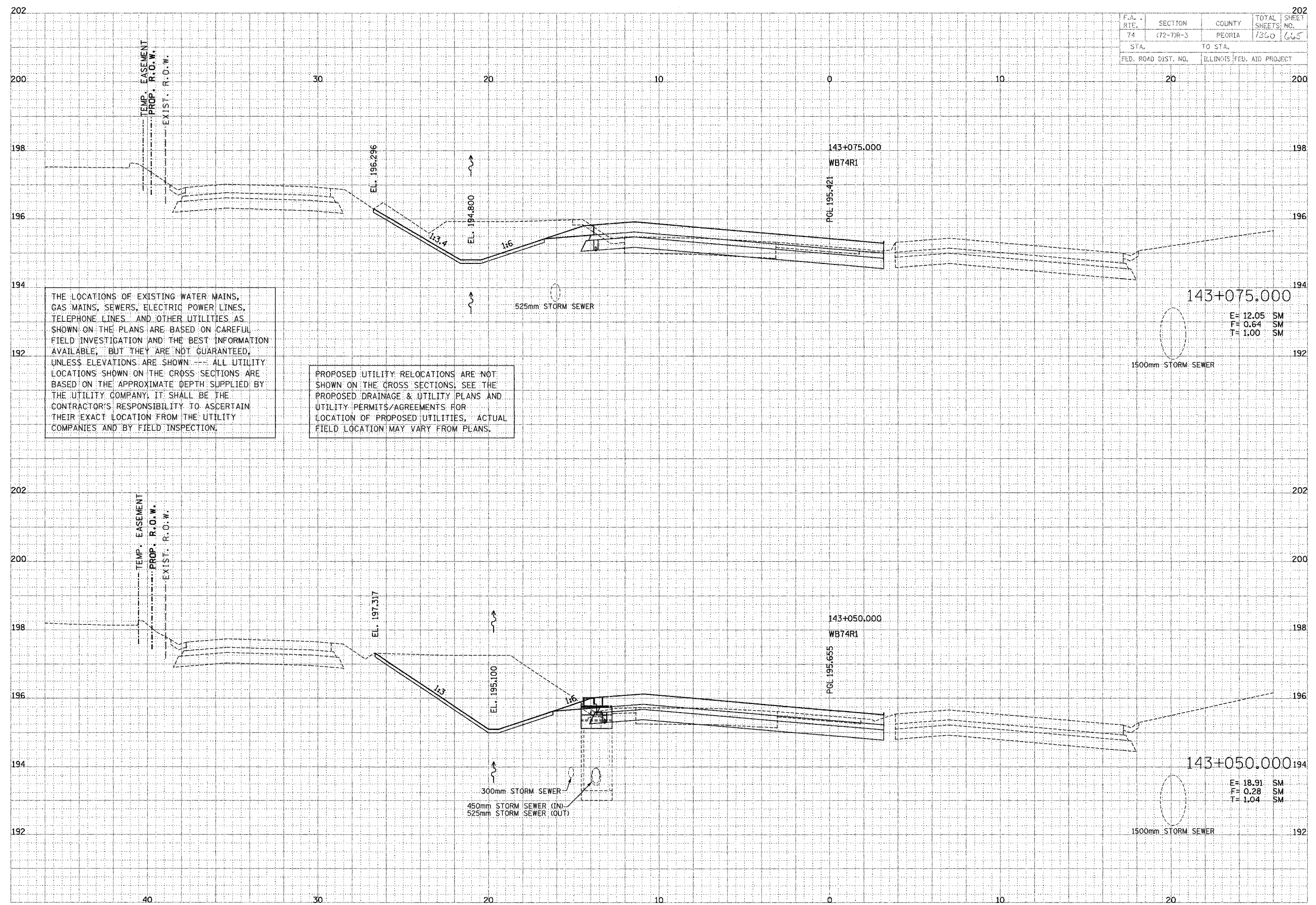


| | | | | |
|---------------------|---------------------------|--------|--------------|-----------|
| F.A. R.T.E. | SECTION | COUNTY | TOTAL SHEETS | SHEET NO. |
| 74 | (72-7)R-3 | PEORIA | 1360 | 665 |
| STA. | TO STA. | | | |
| FED. ROAD DIST. NO. | ILLINOIS FED. AID PROJECT | | | |

| | | |
|------|----|----------|
| DATE | BY | REVISION |
| | | |
| | | |
| | | |
| | | |

PAULSONS TRANSPORTATION GROUP
Engineers and Planners

| | | |
|------|----|----------|
| DATE | BY | REVISION |
| | | |
| | | |
| | | |
| | | |



THE LOCATIONS OF EXISTING WATER MAINS, GAS MAINS, SEWERS, ELECTRIC POWER LINES, TELEPHONE LINES AND OTHER UTILITIES AS SHOWN ON THE PLANS ARE BASED ON CAREFUL FIELD INVESTIGATION AND THE BEST INFORMATION AVAILABLE, BUT THEY ARE NOT GUARANTEED, UNLESS ELEVATIONS ARE SHOWN. ALL UTILITY LOCATIONS SHOWN ON THE CROSS SECTIONS ARE BASED ON THE APPROXIMATE DEPTH SUPPLIED BY THE UTILITY COMPANY. IT SHALL BE THE CONTRACTOR'S RESPONSIBILITY TO ASCERTAIN THEIR EXACT LOCATION FROM THE UTILITY COMPANIES AND BY FIELD INSPECTION.

PROPOSED UTILITY RELOCATIONS ARE NOT SHOWN ON THE CROSS SECTIONS, SEE THE PROPOSED DRAINAGE & UTILITY PLANS AND UTILITY PERMITS/AGREEMENTS FOR LOCATION OF PROPOSED UTILITIES, ACTUAL FIELD LOCATION MAY VARY FROM PLANS.

143+075.000
E= 12.05 SM
F= 0.64 SM
T= 1.00 SM
1500mm STORM SEWER

143+050.000
E= 18.91 SM
F= 0.28 SM
T= 1.04 SM
1500mm STORM SEWER