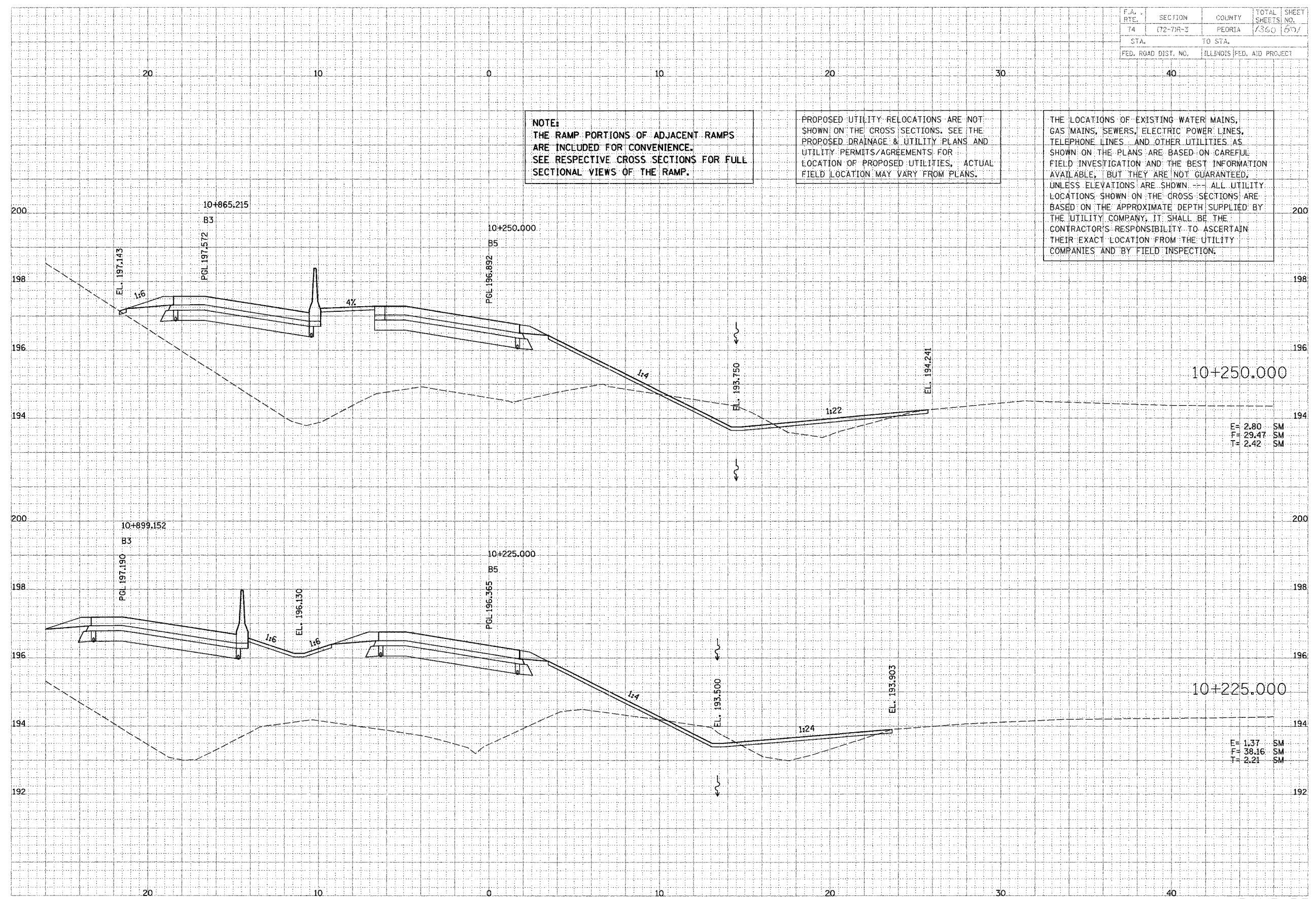


F.A. RTE.	SECTION	COUNTY	TOTAL SHEETS	SHEET NO.
T4	(72-7)R-3	PEORIA	1360	697
STA.	TO STA.			
FED. ROAD DIST. NO.	ILLINOIS FED. AID PROJECT			

DATE	
BY	
CHECKED	
DESIGNED	
PLANNED	
NOTED	
APPROVED	
REVISIONS	

PARSONS  
TRANSPORTATION GROUP  
Engineers and Planners

DATE	
BY	
CHECKED	
DESIGNED	
PLANNED	
NOTED	
APPROVED	
REVISIONS	



NOTE:  
THE RAMP PORTIONS OF ADJACENT RAMP  
ARE INCLUDED FOR CONVENIENCE.  
SEE RESPECTIVE CROSS SECTIONS FOR FULL  
SECTIONAL VIEWS OF THE RAMP.

PROPOSED UTILITY RELOCATIONS ARE NOT  
SHOWN ON THE CROSS SECTIONS. SEE THE  
PROPOSED DRAINAGE & UTILITY PLANS AND  
UTILITY PERMITS/AGREEMENTS FOR  
LOCATION OF PROPOSED UTILITIES. ACTUAL  
FIELD LOCATION MAY VARY FROM PLANS.

THE LOCATIONS OF EXISTING WATER MAINS,  
GAS MAINS, SEWERS, ELECTRIC POWER LINES,  
TELEPHONE LINES AND OTHER UTILITIES AS  
SHOWN ON THE PLANS ARE BASED ON CAREFUL  
FIELD INVESTIGATION AND THE BEST INFORMATION  
AVAILABLE, BUT THEY ARE NOT GUARANTEED.  
UNLESS ELEVATIONS ARE SHOWN. ALL UTILITY  
LOCATIONS SHOWN ON THE CROSS SECTIONS ARE  
BASED ON THE APPROXIMATE DEPTH SUPPLIED BY  
THE UTILITY COMPANY. IT SHALL BE THE  
CONTRACTOR'S RESPONSIBILITY TO ASCERTAIN  
THEIR EXACT LOCATION FROM THE UTILITY  
COMPANIES AND BY FIELD INSPECTION.

E = 2.80 SM  
F = 29.47 SM  
T = 2.42 SM

E = 1.37 SM  
F = 38.16 SM  
T = 2.21 SM

RAMP-B5