

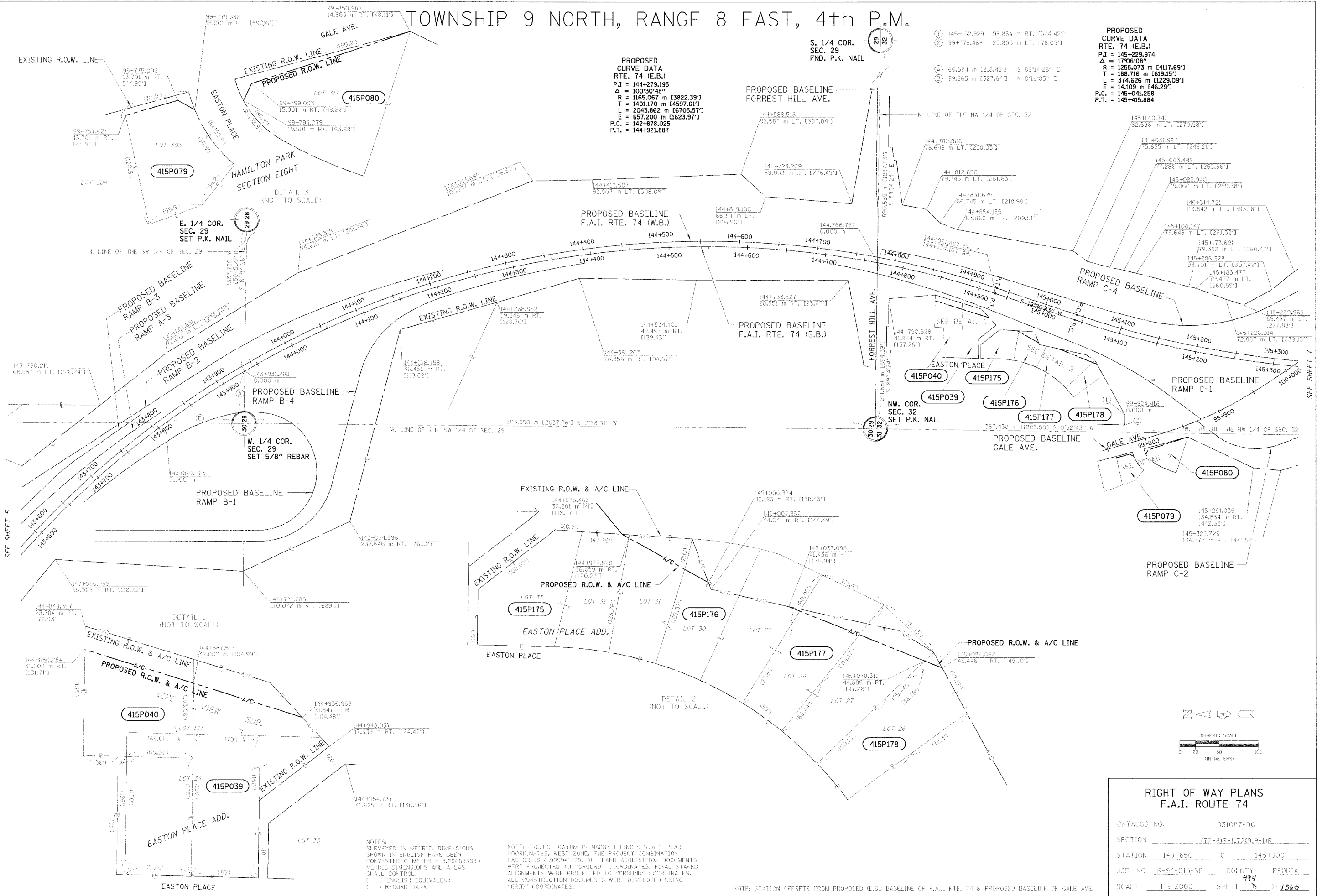
TOWNSHIP 9 NORTH, RANGE 8 EAST, 4th P.M.

PROPOSED CURVE DATA
 RTE. 74 (E.B.)
 P.I. = 144+279.195
 Δ = 100°30'48"
 R = 1165.067 m [3822.39']
 T = 1401.170 m [4597.01']
 L = 2043.862 m [6705.57']
 E = 657.200 m [2155.97']
 P.C. = 142+478.025
 P.T. = 144+921.887

① 145+132.929 98.884 m RT. [324.42']
 ② 99+779.468 23.803 m LT. [78.09']
 ③ 66.584 m [218.45'] S 89°14'28" E
 ④ 99.865 m [327.64'] N 0°18'03" E

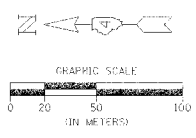
PROPOSED CURVE DATA
 RTE. 74 (E.B.)
 P.I. = 145+229.974
 Δ = 17°06'08"
 R = 1255.073 m [4117.69']
 T = 188.716 m [619.15']
 L = 374.626 m [1229.09']
 E = 14.109 m [46.29']
 P.C. = 145+041.258
 P.T. = 145+415.884

APPROVED BY _____ DISTRICT ENGINEER
 DATE _____



SEE SHEET 5

SEE SHEET 7



RIGHT OF WAY PLANS F.A.I. ROUTE 74	
CATALOG NO.	031087-00
SECTION	(72-8)R-1, 7259.9-1R
STATION	143+1650 TO 145+1300
JOB. NO.	R-94-015-38 COUNTY PEORIA
SCALE	1 : 2000 SHEET 5 OF 1360

NOTES:
 SURVEYED IN METRIC DIMENSIONS
 SHOWN IN ENGLISH HAVE BEEN
 CONVERTED (1 METER = 3.28083333')
 METRIC DIMENSIONS AND AREAS
 SHALL CONTROL.
 () E.W. ISH EQUIVALENT
 () RECORD DATA

NOTE: PROJECT DATUM IS NAD83 ILLINOIS STATE PLANE
 COORDINATES, WEST ZONE. THE PROJECT COMBINATION
 FACTOR IS 0.999941679. ALL LAND ACQUISITION DOCUMENTS
 WITH PROMPTED TO "GROUND" COORDINATES. FINAL STAKED
 ALIGNMENTS WERE PROJECTED TO "GROUND" COORDINATES.
 ALL CONSTRUCTION DOCUMENTS WERE DEVELOPED USING
 "GRD" COORDINATES.

NOTE: STATION OFFSETS FROM PROPOSED (E.S.) BASELINE OF F.A.I. RTE. 74 & PROPOSED BASELINE OF GALE AVE.