

All Dimensions are in millimeters (mm) unless noted otherwise.

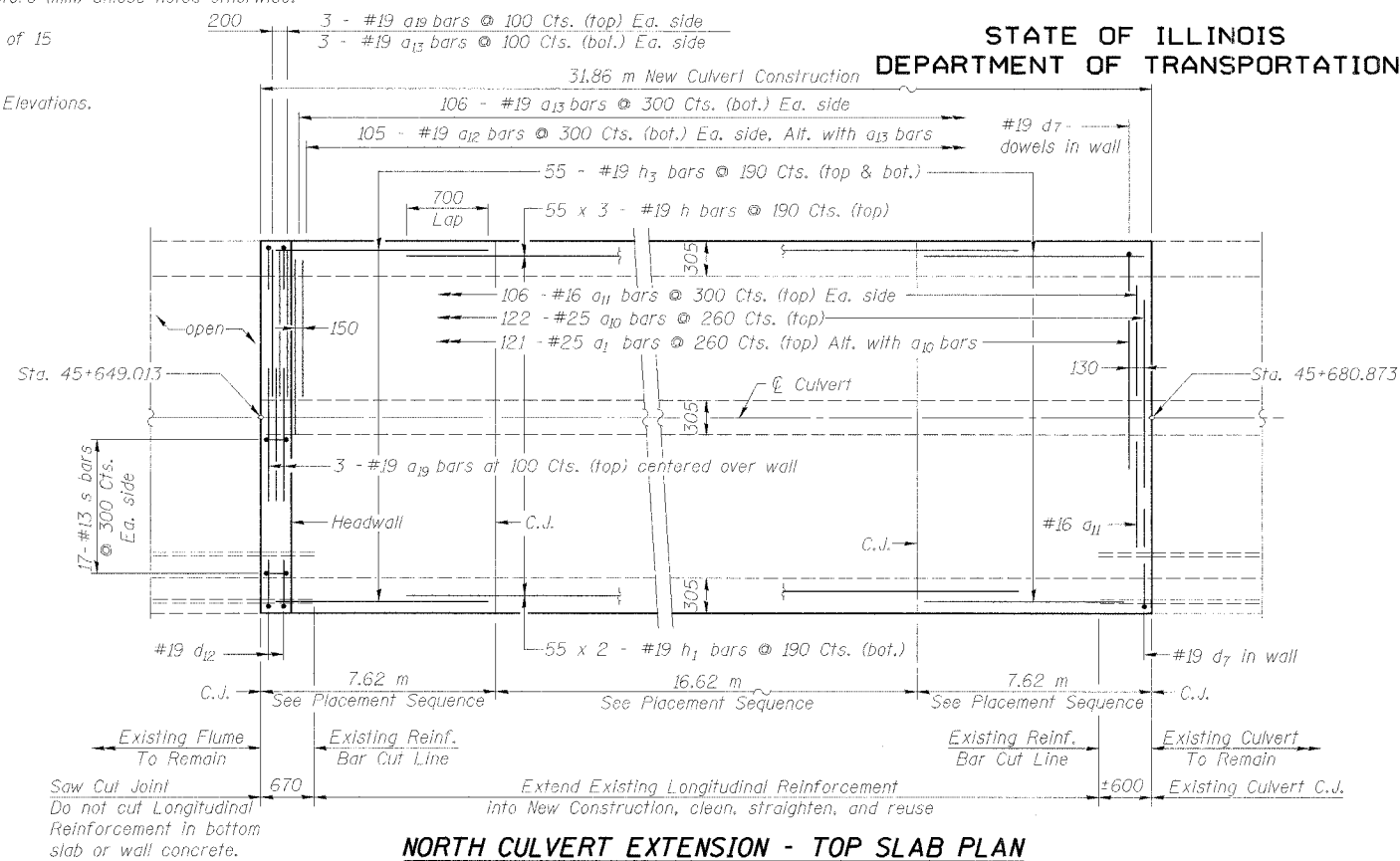
See Cross Section Sheet 10 of 15 for Reinforcement Location.

See Sheet 5 of 15 for Wall Elevations.

STATE OF ILLINOIS  
DEPARTMENT OF TRANSPORTATION

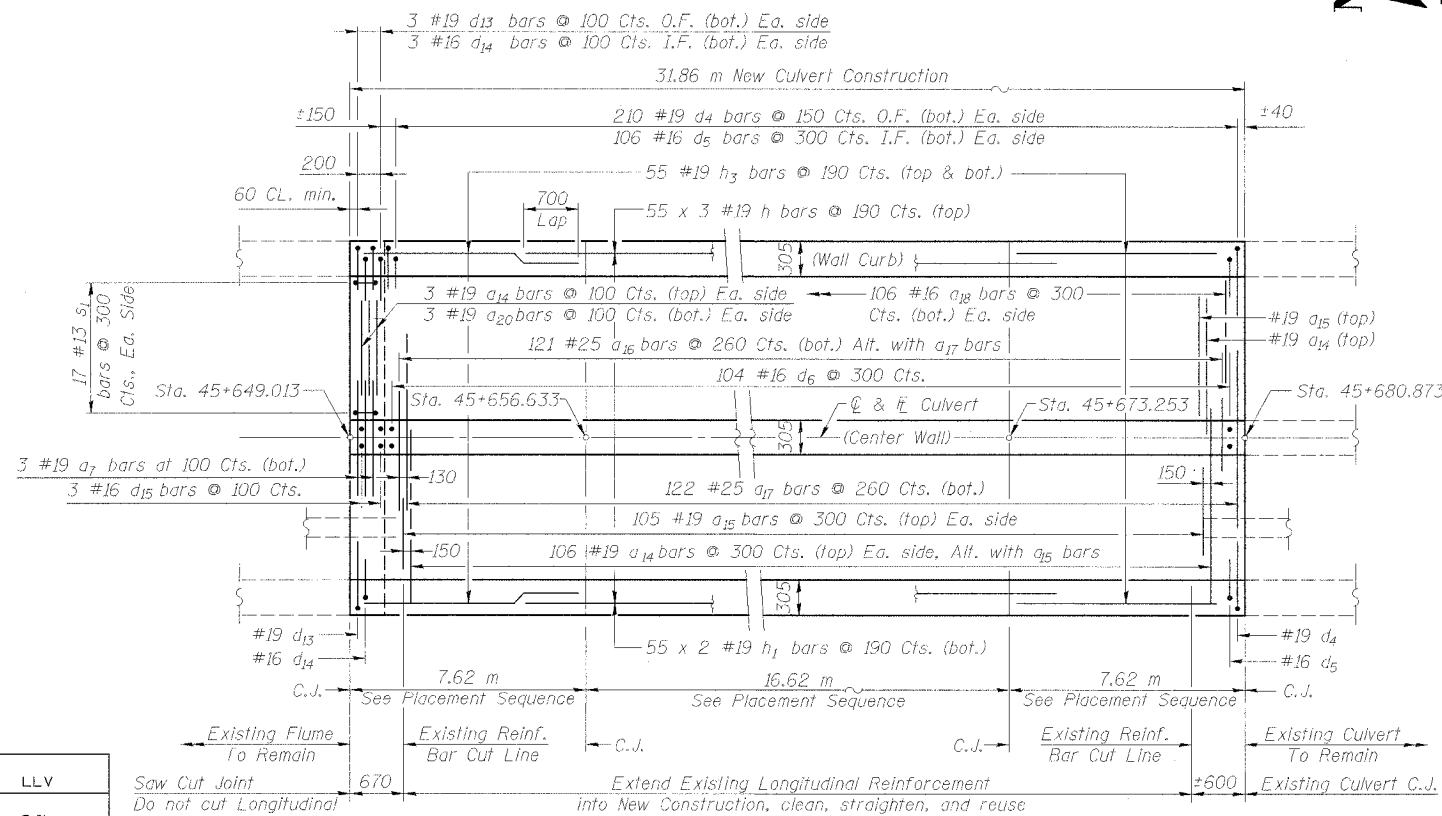
ROUTE NO.	SECTION	COUNTY	TOTAL SHEETS	SHEET NO.	SHEET NO. 4 of 15 SHEETS
F.A.I. 74	*	PEORIA	1360	1026	
FED. ROAD DIST. NO. 7		ILLINOIS	FED. AID PROJECT		

\* (72-7)R-3 Contract 68200



**NORTH CULVERT EXTENSION - TOP SLAB PLAN**

C.J. = Construction Joint, See Placement Sequence



**NORTH CULVERT EXTENSION - BOTTOM SLAB PLAN**

C.J. = Construction Joint, See Placement Sequence

**BILL OF MATERIAL**

For North Culvert Extension  
Culvert Sta. 45+649.013 to Sta. 45+680.873

Bar	No.	Size	Length (m)	Shape
a1	121	#25	3.60	—
a7	3	#19	4.80	—
a10	122	#25	4.80	—
a11	212	#16	2.53	—
a12	210	#19	3.18	—
a13	218	#19	5.45	—
a14	218	#19	5.50	—
a15	210	#19	3.28	—
a16	121	#25	3.60	—
a17	122	#25	4.80	—
a18	212	#16	2.57	—
a19	9	#19	3.87	—
a20	6	#19	3.45	—
d4	420	#19	2.65	—
d5	212	#16	1.57	—
d6	104	#16	2.77	—
d7	420	#19	2.61	—
d12	6	#19	2.85	—
d13	6	#19	2.89	—
d14	6	#16	1.81	—
d15	3	#16	3.25	—
h	330	#19	6.46	—
h1	220	#19	9.35	—
h2	116	#16	9.19	—
h3	440	#19	7.57	—
h4	116	#16	7.57	—
s	34	#13	2.14	—
s1	34	#13	2.14	—
v	432	#19	2.50	—
v3	216	#16	3.15	—
v4	214	#16	3.74	—
x	8	#19	2.22	—
Item	Unit	Qty.		
Reinforcement Bars	kg	49,050		
Concrete Box Culverts	m <sup>3</sup>	499.9		
Concrete Removal	m <sup>3</sup>	240.0		

Bars indicated thus:  
55 x 3 #19 bars indicates 55 lines of #19 bars  
with 3 lengths per line, typ.

**PLACEMENT SEQUENCE**

- Center portion of slabs are placed first.
- 7 days shall pass between time of center portion placement and end portions of culvert slabs.

DESIGNED	LLV
CHECKED	PJL
DRAWN	MGM
CHECKED	LLV

Saw Cut Joint  
Do not cut Longitudinal Reinforcement in bottom slab or wall concrete.

**PLAN TOP SLAB & BOTTOM SLAB  
NORTH CULVERT EXTENSION  
RAMP C-3 OVER DRY RUN CREEK  
F.A.I. ROUTE 74(I-74) SECTION (72-7)R-3  
PEORIA COUNTY  
STATION 10+277.51 TO  
STA. 10+441.66 (RAMP C-3)  
STRUCTURE NUMBER 072-2005**



111 NE Jefferson Ave.  
Peoria, Illinois 61602  
Ph(309)676-8464  
FAX(309)676-5445