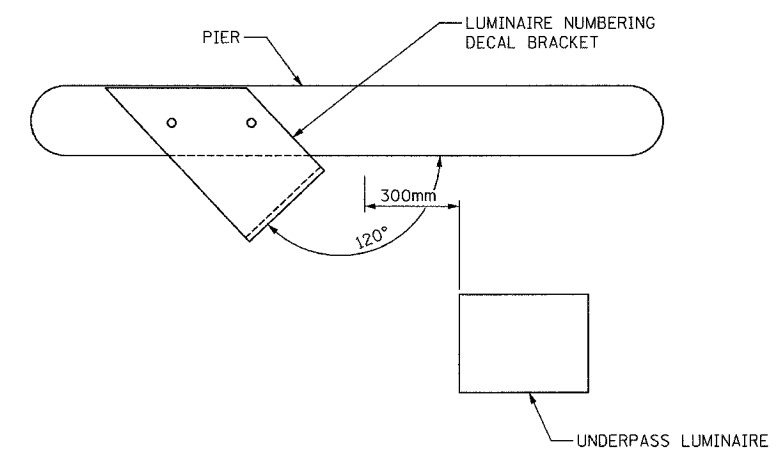
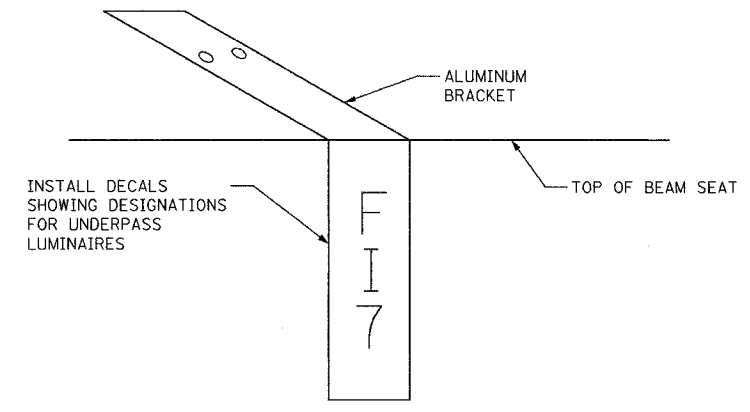
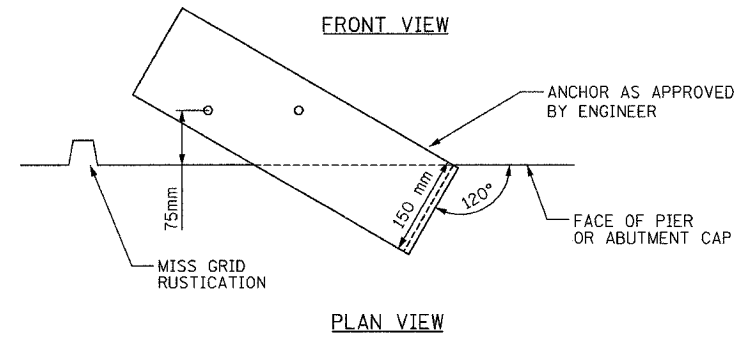


F.A.I. RTE.	SECTION	COUNTY	TOTAL SHEETS	SHEET NO.
74	(72-71R-3	PEORIA	1360	1332
STA.	TO STA.			
FED. ROAD DIST. NO.	ILLINOIS	FED. AID PROJECT		

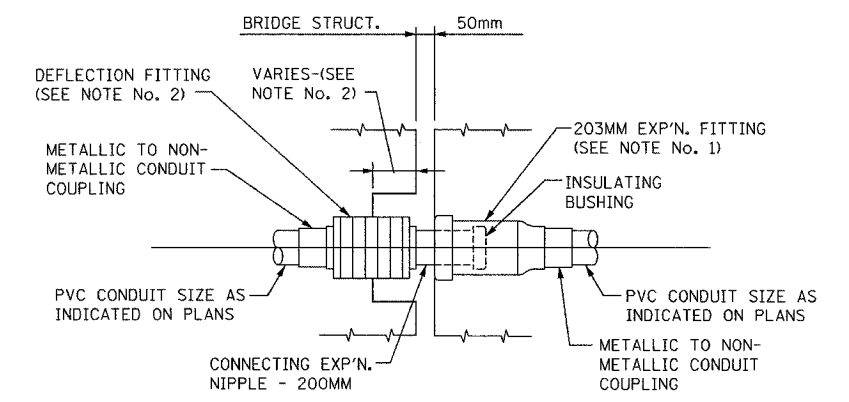
CONTRACT NO. 68200



UNDERPASS LUMINAIRE NUMBERING BRACKET INSTALLATION DETAIL



UNDERPASS LUMINAIRE NUMBERING BRACKET DETAIL



- NOTES:
1. THE BARREL OF THE FITTING SHALL BE FULLY EMBEDDED IN THE CONCRETE OF ONE SIDE OF THE EXPANSION JOINT.
 2. A CAVITY OPENING, IF REQUIRED, SHALL BE A 75mm LARGER DIAMETER THAN THE DEFLECTION SLEEVE DIAMETER AND A MAXIMUM DEPTH OF HALF OF THE DEFLECTION SLEEVE LENGTH. THE DEFLECTION FITTING SHALL BE CENTERED IN THE OPENING AND EMBEDDED IN THE CONCRETE ONLY UP TO THE DEFLECTION FITTING CENTER.

CONDUIT EXPANSION / DEFLECTION COUPLING DETAIL

NOTE - COST OF CONDUIT EXPANSION/DEFLECTION COUPLING IS INCLUDED IN THE PAY ITEM FOR CONDUIT.

m:\proj\3573\lighting\4\contract\10\11\1000-7a_misc_details.dgn

4/13/09 PM

11/12/2004

LIGHTING SHEET 48 OF 64

REVISIONS	
NAME	DATE

ILLINOIS DEPARTMENT OF TRANSPORTATION
MISCELLANEOUS LIGHTING DETAILS

ab **alfred benesch & company**
CONSULTING ENGINEERS
205 NORTH MICHIGAN AVENUE, CHICAGO, ILLINOIS 60601

DATE: 11/12/04
DRAWN BY JWW
CHECKED BY MKR