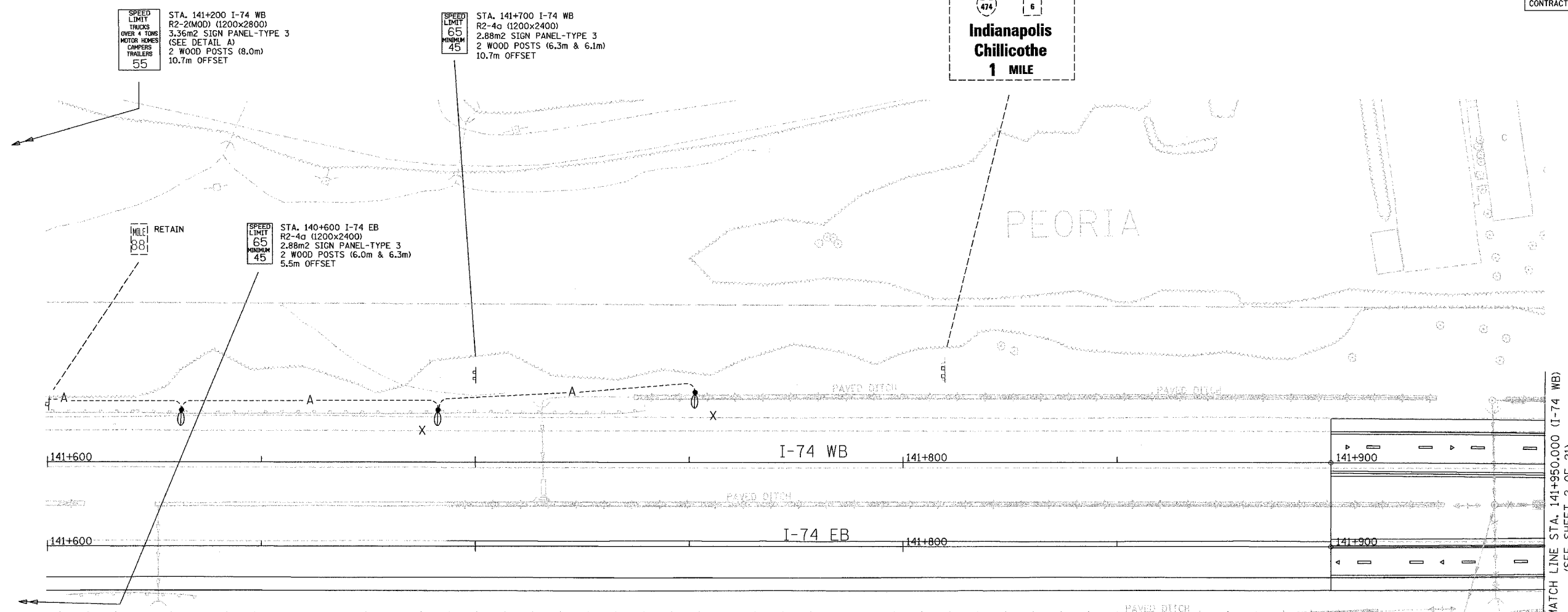


F.A.I. RTE.	SECTION	COUNTY	TOTAL SHEETS	SHEET NO.
74	(72-7R-3)	PEORIA	1360	1367
STA. 141+600.000 TO STA. 141+950.000				
FED. ROAD DIST. NO.		ILLINOIS	FED. AID PROJECT	
CONTRACT NO. 68200				

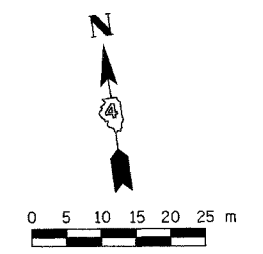


**PROJECT SPECIFIC NOTES FOR PERMANENT SIGNING**

- SIGN SIZE AND DIMENSION INFORMATION NOT SHOWN ON THE PLANS SHALL BE IN ACCORDANCE WITH THE IDOT "STANDARD HIGHWAY SIGNS" MANUAL.
- EXISTING SIGNS WITHIN PREVIOUS CONTRACT OR UTILITY RELOCATION AREAS WERE RELOCATED BY OTHER PARTIES. THE LOCATIONS OF SUCH SIGNS REPRESENTED ON THESE PLANS REPRESENT APPROXIMATED RELOCATIONS. THE CONTRACTOR SHALL RELOCATE THESE SIGNS TO THEIR PERMANENT DEFINED LOCATION.
- SIGN FACES, LEGEND AND BORDERS SHALL BE FABRICATED OF REFLECTIVE SHEETING. (SEE SPECIAL PROVISIONS)
- QUANTITIES FOR REGULATORY AND WARNING SIGN PANELS THAT ARE MOUNTED ON SUPPORTS OF GROUND MOUNTED OR OVERHEAD GUIDE SIGNS ARE SHOWN IN THE BILL OF MATERIALS FOR REGULATORY AND WARNING SIGNS.
- FOR DETAILS OF GROUND MOUNTED AND OVERHEAD SIGNS, SEE BILLS OF MATERIALS AND SIGN PANEL DETAIL SHEETS.
- FOR DETAILS OF NON-STANDARD REGULATORY AND WARNING SIGN LEGENDS, SEE REGULATORY AND WARNING SIGN DETAIL SHEETS.
- SIGN PANEL OFFSETS ARE SHOWN FROM PROPOSED EDGE OF PAVEMENT TO NEAREST EDGE OF PANEL UNLESS OTHERWISE SHOWN.
- SEE SIGN STRUCTURE SHEETS FOR ADDITIONAL OVERHEAD SIGN PANEL LOCATION INFORMATION.
- RAMP ADVISORY SPEED SIGNS (W13-3) TO BE FURNISHED AND INSTALLED BY IDOT.
- CITY OWNED SIGNS TO BE RELOCATED MAY BE REPLACED INSTEAD AS DETERMINED BY THE CITY OF PEORIA DURING CONSTRUCTION. THE CITY WOULD BE RESPONSIBLE FOR THE FABRICATION AND DELIVERY OF ANY REPLACED SIGN. THE CONTACT PERSON FOR THE CITY IS TOM O'NEILL, TELEPHONE NUMBER (309) 494-8886. THE PLACEMENT OF NEW SIGN PANELS PROVIDED BY THE CITY SHALL BE INCLUDED IN THE COST OF "RELOCATE SIGN PANEL ASSEMBLY" OF THE TYPE SPECIFIED.
- PROPOSED MAST ARM MOUNTED STREET NAME SIGNS AND STREET NAME SIGNS AT NEW INTERSECTIONS ARE TO BE FURNISHED AND INSTALLED BY THE CITY OF PEORIA, AS SHOWN ON THE PLANS. THE CONTRACTOR SHALL COORDINATE THE TIMING OF PERMANENT SIGNAL INSTALLATION WITH THE CITY TO LIMIT LANE CLOSURES.
- DIMENSIONS ARE IN MILLIMETERS UNLESS OTHERWISE SHOWN.
- PRIOR TO DRILLING OR DIGGING TO INSTALL ANY SIGN POST, THE CONTRACTOR SHALL LOCATE ANY PREVIOUSLY EXISTING OR NEWLY INSTALLED UNDERGROUND ITS, LIGHTING, TRAFFIC SIGNAL, OR OTHER POWER SUPPLY AND COMMUNICATION CONDUITS, AS WELL AS STORM SEWERS AND UNDERDRAINS WHICH MAY BE PRESENT IN THE VICINITY OF THE SIGN. IF A SIGN POST IS DETERMINED TO CONFLICT WITH ANY UNDERGROUND CONDUIT, THE SIGN SHALL BE SHIFTED TO AVOID THE CONFLICT. ALL ADJUSTED SIGN LOCATIONS SHALL BE APPROVED BY THE ENGINEER BEFORE THE POSTS ARE INSTALLED. THE CONTRACTOR SHALL BE SOLELY RESPONSIBLE FOR ANY DAMAGE TO UNDERGROUND CONDUITS THAT OCCURS IN THE COURSE OF HIS WORK. THE EXTENT AND NATURE OF REPAIR OF CONDUITS DAMAGED BY THE CONTRACTOR SHALL BE AS DETERMINED BY THE ENGINEER AT NO ADDITIONAL CHARGE TO THE OWNER.

**LEGEND**

- SIGN PANELS:**
- EXISTING SIGN PANEL
  - PROPOSED SIGN PANEL
  - NON-STANDARD SIGN NUMBER
  - BY OTHERS (SEE LEGEND NOTE 2)
- CITY OWNED SIGNS:**
- CITY OWNED SIGNS TO BE RETAINED
  - CITY OWNED SIGNS TO BE REMOVED
  - CITY OWNED SIGNS TO BE RELOCATED
- LEADERS:**
- EXISTING SIGN LOCATION
  - PROPOSED SIGN LOCATION
- LEGEND NOTE:**
- SIGNS ARE SHOWN IN THE ACTUAL DIRECTION THEY FACE ONLY WHEN NECESSARY FOR CLARITY. BACK-TO-BACK SIGN PANELS MAY THEREFORE NEED TO BE ROTATED CLOCKWISE BY 90° TO BE READ CORRECTLY.
  - SEE BILL OF MATERIALS SCHEDULE SHEETS TO DEFINE RESPONSIBLE PARTY.



SIGNING SHEET 19 OF 83

REVISIONS		ILLINOIS DEPARTMENT OF TRANSPORTATION	
NAME	DATE		
		SIGNING PLAN	
		F.A.I. ROUTE 74	
		STA. 141+600 TO STA. 141+950	
		( SHEET 1 OF 21 )	
		SCALE 1:500	DRAWN BY MEG
		DATE 11/15/2004	CHECKED BY BCG

11/15/2004 10:48:10 AM C:\work\10491001\_74.dgn

