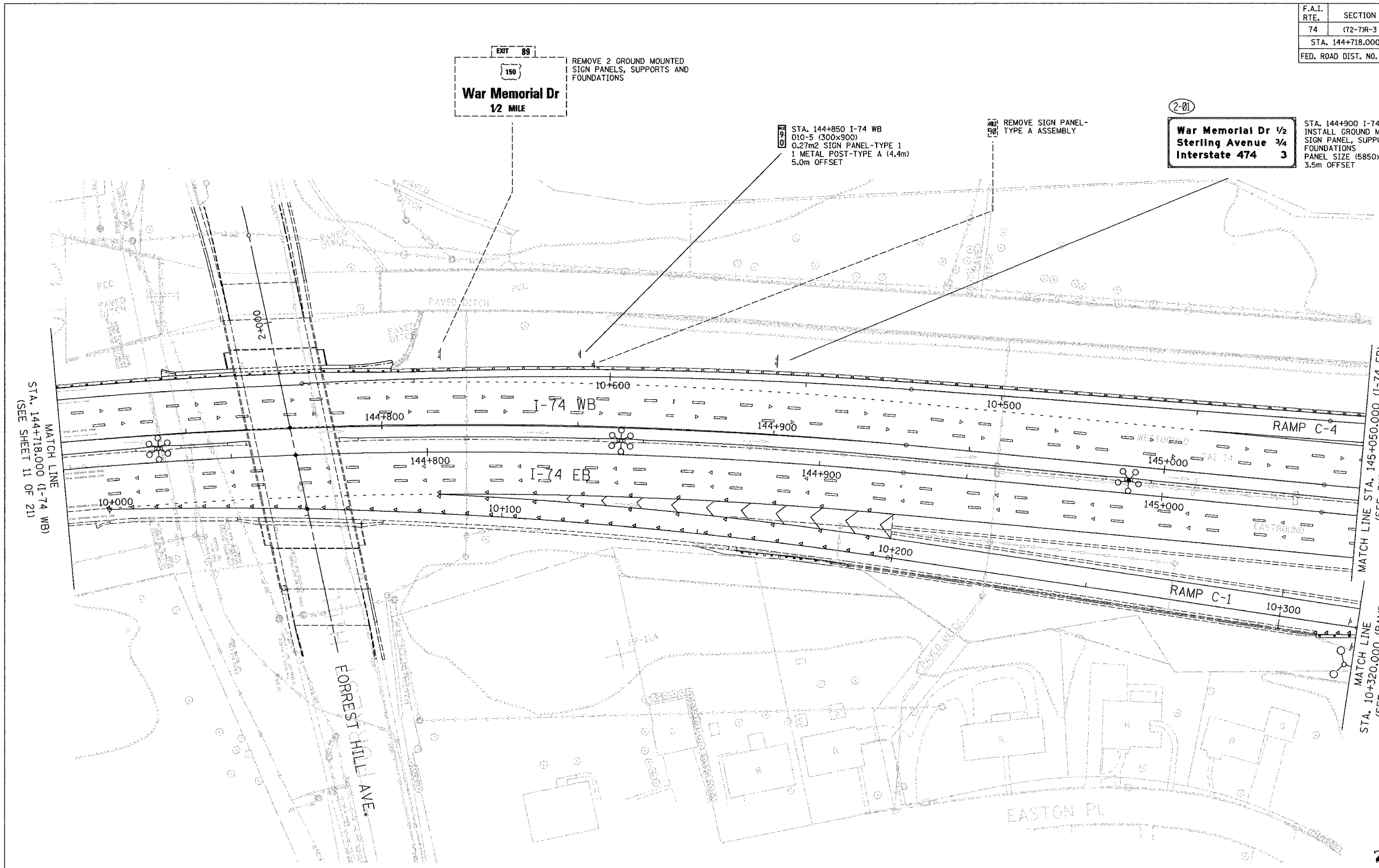


F.A.I. RTE.	SECTION	COUNTY	TOTAL SHEETS	SHEET NO.
74	(72-71R-3)	PEORIA	1860	1273
STA. 144+718.000		TO STA. 145+050.000		
FED. ROAD DIST. NO.		ILLINOIS	FED. AID PROJECT	
CONTRACT NO. 68200				



EXIT 89
War Memorial Dr
 1/2 MILE
 REMOVE 2 GROUND MOUNTED SIGN PANELS, SUPPORTS AND FOUNDATIONS

2-01
 STA. 144+850 I-74 WB
 D10-5 (300x900)
 0.27m² SIGN PANEL-TYPE 1
 1 METAL POST-TYPE A (4.4m)
 5.0m OFFSET

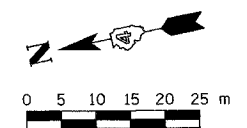
REMOVE SIGN PANEL-TYPE A ASSEMBLY

2-01
War Memorial Dr 1/2
Interstate 474 3/4
 3
 STA. 144+900 I-74 WB
 INSTALL GROUND MOUNTED SIGN PANEL, SUPPORTS AND FOUNDATIONS
 PANEL SIZE (5850x2134)
 3.5m OFFSET

MATCH LINE
 STA. 144+718.000 (I-74 WB)
 (SEE SHEET 11 OF 21)

MATCH LINE STA. 145+050.000 (I-74 EB)
 (SEE SHEET 13 OF 21)

MATCH LINE STA. 10+320.000 (RAMP C-1)
 (SEE SHEET 13 OF 21)



- LEGEND**
- (A) CITY OWNED SIGNS TO BE RETAINED
 - (B) CITY OWNED SIGNS TO BE REMOVED
 - (C) CITY OWNED SIGNS TO BE RELOCATED
 - * BY OTHERS
 - (3-28) NON-STANDARD SIGN NUMBER

REVISIONS	
NAME	DATE

ILLINOIS DEPARTMENT OF TRANSPORTATION

SIGNING PLAN
 F.A.I. ROUTE 74
 STA. 144+718 TO STA. 145+050
 (SHEET 12 OF 21)

SCALE 1:500
 DATE 11/15/2004

DRAWN BY MEG
 CHECKED BY BCG



11/15/2004 11:52:00 AM c:\p1012_75.dgn