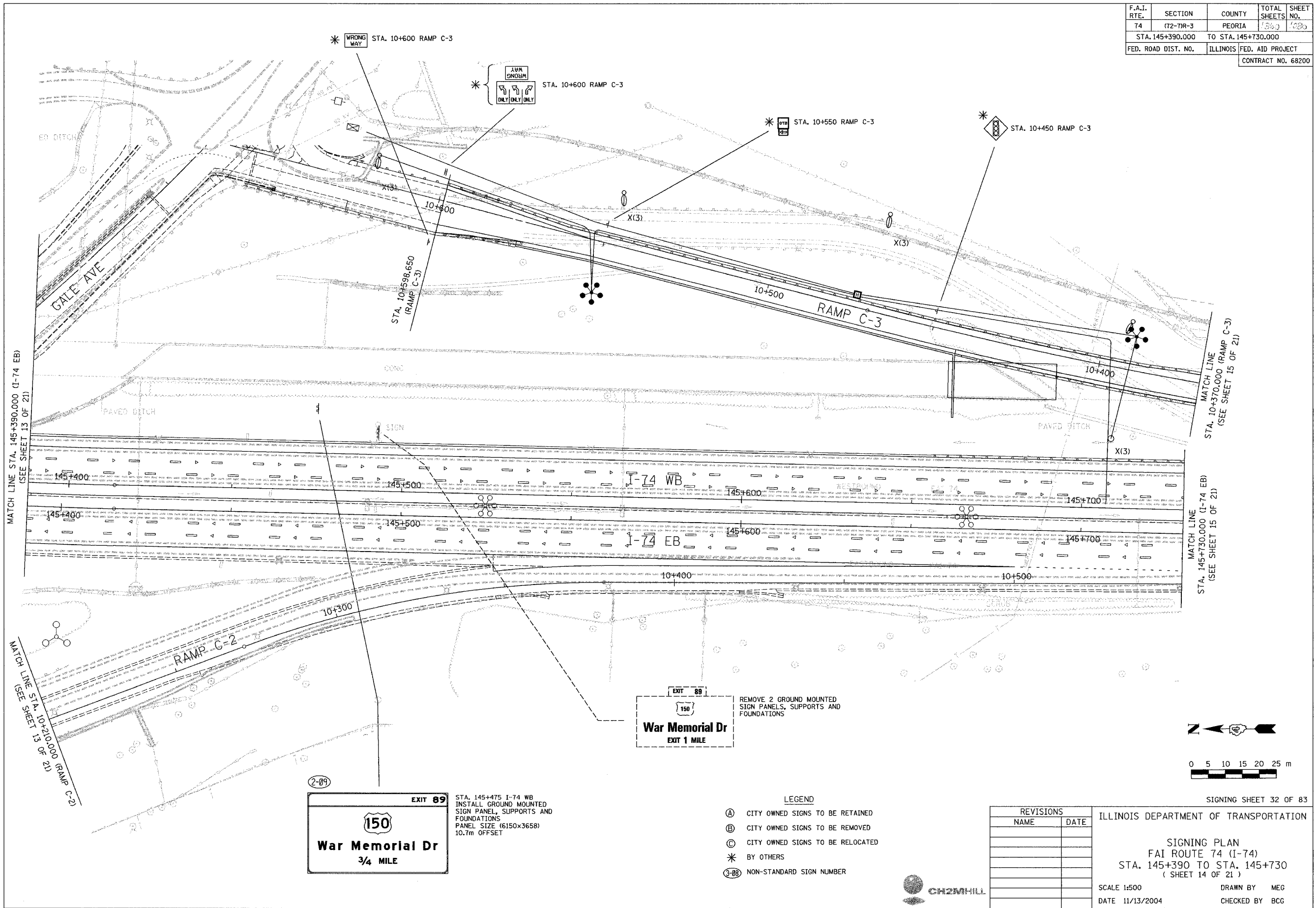


F.A.I. RTE.	SECTION	COUNTY	TOTAL SHEETS	SHEET NO.
74	(72-77R-3)	PEORIA	150	108
STA. 145+390.000		TO STA. 145+730.000		
FED. ROAD DIST. NO.		ILLINOIS	FED. AID PROJECT	
CONTRACT NO. 68200				



MATCH LINE STA. 145+390.000 (I-74 EB)
(SEE SHEET 13 OF 21)

MATCH LINE STA. 10+370.000 (RAMP C-3)
(SEE SHEET 15 OF 21)

MATCH LINE STA. 145+730.000 (I-74 EB)
(SEE SHEET 15 OF 21)

MATCH LINE STA. 10+210.000 (RAMP C-2)
(SEE SHEET 13 OF 21)

EXIT 89
150
War Memorial Dr
EXIT 1 MILE

REMOVE 2 GROUND MOUNTED SIGN PANELS, SUPPORTS AND FOUNDATIONS

2-89

EXIT 89
150
War Memorial Dr
3/4 MILE

STA. 145+475 I-74 WB
INSTALL GROUND MOUNTED SIGN PANEL, SUPPORTS AND FOUNDATIONS
PANEL SIZE (6150x3658)
10.7m OFFSET

- LEGEND**
- (A) CITY OWNED SIGNS TO BE RETAINED
 - (B) CITY OWNED SIGNS TO BE REMOVED
 - (C) CITY OWNED SIGNS TO BE RELOCATED
 - * BY OTHERS
 - (3-88) NON-STANDARD SIGN NUMBER

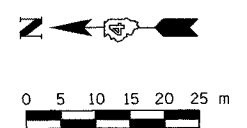
REVISIONS	
NAME	DATE

ILLINOIS DEPARTMENT OF TRANSPORTATION

SIGNING PLAN
FAI ROUTE 74 (I-74)
STA. 145+390 TO STA. 145+730
(SHEET 14 OF 21)

SCALE 1:500
DATE 11/13/2004

DRAWN BY MEG
CHECKED BY BCG



SIGNING SHEET 32 OF 83



11/13/2004 11:13:20 AM 11/13/2004