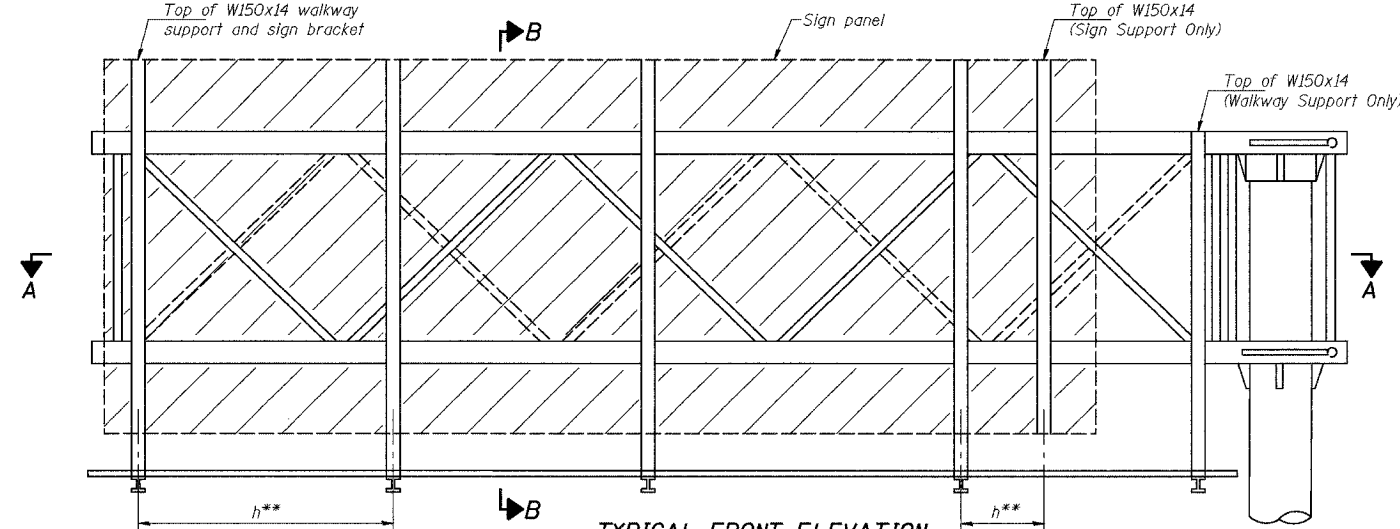


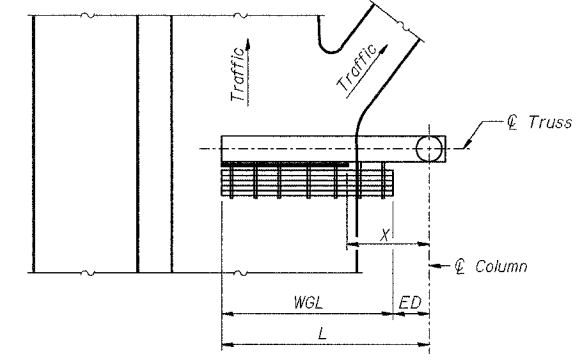
STATE OF ILLINOIS  
DEPARTMENT OF TRANSPORTATION

ROUTE No.	SECTION	COUNTY	TOTAL SHEETS	SHEET NO.
FAI 74	*	PEORIA	1360	1314
STA.	TO STA.			
F.H.W.A. REGION	ILLINOIS	PROJECT		
*(72-7R-3		CONTRACT NO. 68200		

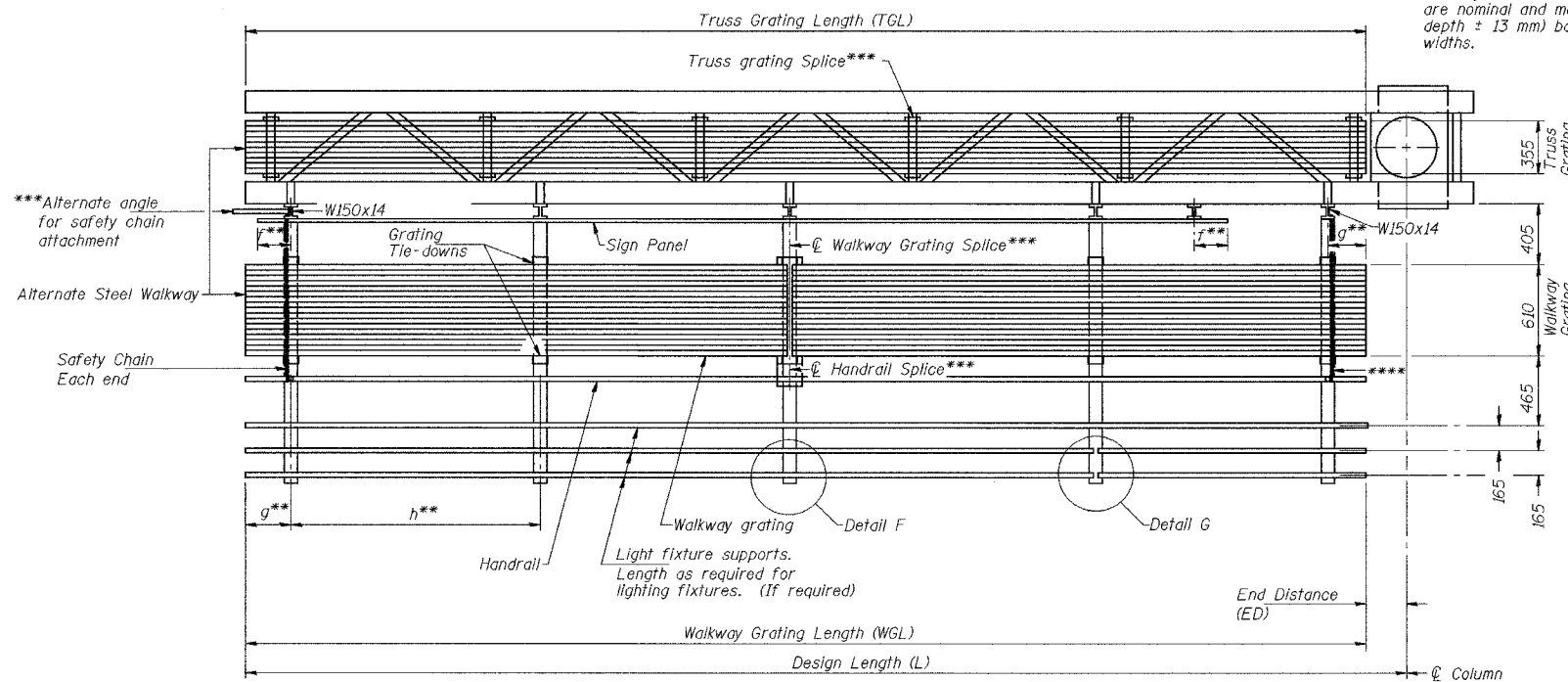
Walkway Grating, Walkway Supports, Handrail and Lighting are not included.  
Information shown on this sheet shall be used for Truss Grating, Sign Supports and Sign Panel locations only.



**TYPICAL FRONT ELEVATION**  
With lights and handrail omitted for clarity.



**PLAN**  
**WALKWAY AND HANDRAIL SKETCH**  
(Road plan beneath truss varies)  
("X" is measured along  $\phi$  truss to edge of sign panel)



Walkway and truss grating dimensions are nominal and may vary (width  $\pm 13$  mm, depth  $\pm 13$  mm) based on available standard widths.

Structure Number	Station	WGL (m)	ED (m)	TGL (m)	X (m)
4C0721074L089.3	143+740			7.422	3.677

Notes: \*\*Space W150x14 walkway brackets and sign brackets for efficiency and within limits shown:

- f = 300 maximum, 100 minimum (End of sign to  $\phi$  of nearest bracket)
- g = 300 maximum, 100 minimum (End of walkway to  $\phi$  of nearest bracket)
- h = 1.85 m maximum ( $\phi$  to  $\phi$  sign and/or walkway support brackets, W150x14)

\*\*\*If walkway bracket at safety chain location is behind sign, add angle to bracket.  
For details of sign placement, sign/walkway brackets, truss and walkway gratings, grating splices and Section B-B, see Base Sheet OSC-S-75(M).  
For details of handrail, handrail splice, safety chain and Details F and G, see Base Sheet OSC-S-8(M).

**SECTION A-A**

Truss grating to facilitate inspection shall run full length of cantilevers. Cost of truss grating is included in "Overhead Sign Structure-Cantilever...".

Handrail and walkway grating shall span a minimum of three brackets between splices.  
\*\*\*Use and location of handrail or grating splices are optional, based on lengths needed and material availability.

$$TGL = L - \left( \frac{\text{Post O.D.}}{2} + 150 \right)$$

DESIGNED	RJW	EXAMINED	2004
CHECKED	KJN	ENGINEER OF STRUCTURAL SERVICES	
DRAWN	RJW	PASSED	
CHECKED	KJN	ENGINEER OF BRIDGES AND STRUCTURES	

NUMBER	REVISION	DATE

**BRACKET TABLE**

W150x14		Number Brackets Required
Sign Width Greater Than	Less Than or Equal To	
	3.0	2
3.0	4.9	3
4.9	6.7	4
6.7	8.6	5
8.6	10.4	6

SIGNING SHEET 66 OF 83

**CANTILEVER SIGN STRUCTURES  
ALTERNATE STEEL WALKWAY DETAILS  
STEEL TRUSS & STEEL POST**

ILLINOIS DEPARTMENT OF TRANSPORTATION

SIGNING PLAN  
W.B. I-74 STA. 143+740  
S.N. 4C0721074L089.3

PEORIA CO., IL.

DATE: II-II-04

M:\Proj\3573\Sign Structures\Contract 10\sp\002-74can-sfl.dgn

OSC-S-6S(M) 10/1/2001