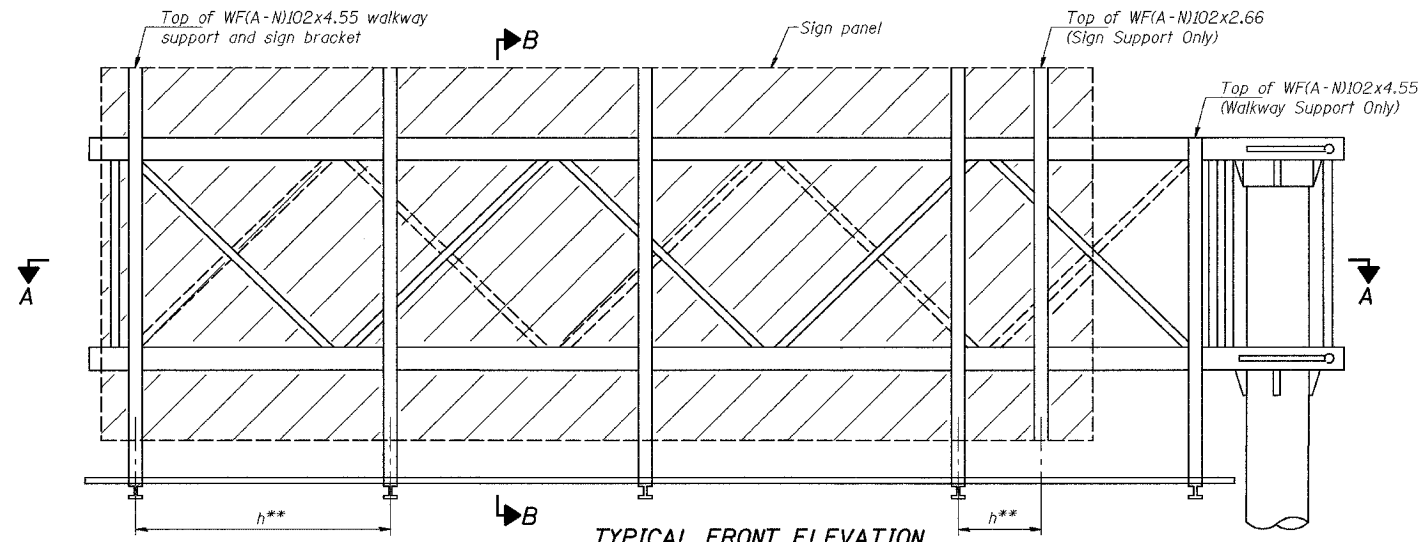


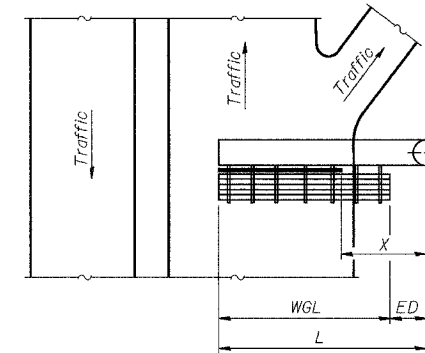
STATE OF ILLINOIS
DEPARTMENT OF TRANSPORTATION

ROUTE NO.	SECTION	COUNTY	TOTAL SHEETS	SHEET NO.
FAI 74	*	PEORIA	1340	1323
STA.		TO STA.		
F.H.W.A. REGION		ILLINOIS	PROJECT	
*(72-71R-3		CONTRACT NO. 68200		

Walkway Grating, Walkway Supports, Handrail and Lighting are not included. Information shown on this sheet shall be used for Truss Grating, Sign Supports and Sign Panel locations only.

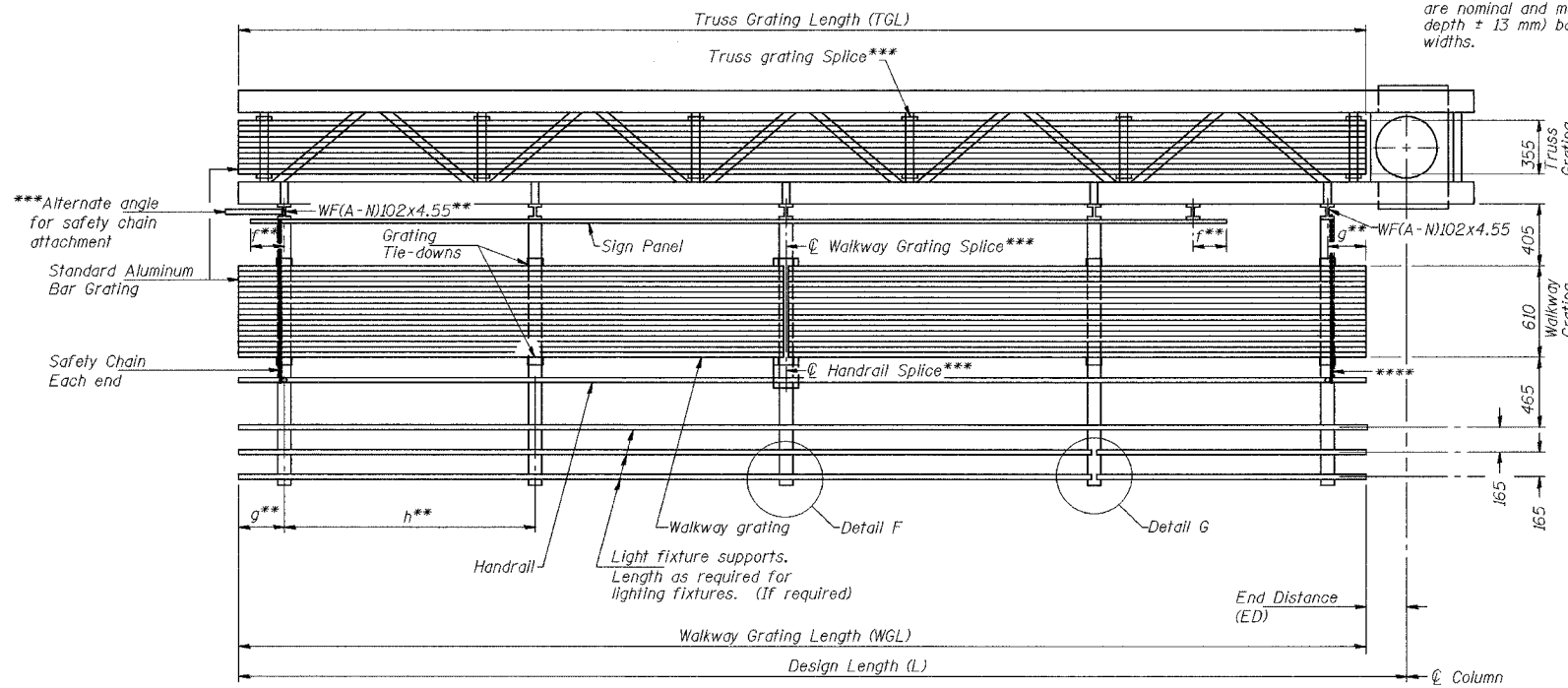


TYPICAL FRONT ELEVATION
With lights and handrail omitted for clarity.



WALKWAY AND HANDRAIL SKETCH
(Road plan beneath truss varies)
("X" is measured along ϕ truss to edge of sign panel)

Walkway and truss grating dimensions are nominal and may vary (width ± 13 mm, depth ± 13 mm) based on available standard widths.



SECTION A-A

Truss grating to facilitate inspection shall run full length of cantilevers. Cost of truss grating is included in "Overhead Sign Structure-Cantilever...".

Handrail and walkway grating shall span a minimum of three brackets between splices. ***Use and location of handrail or grating splices are optional, based on lengths needed and material availability.

$$TGL = L - \left(\frac{\text{Post O.D.}}{2} + 150 \right)$$

NUMBER	REVISION	DATE

DESIGNED	RJW	2004
CHECKED	KJN	EXAMINED
DRAWN	RJW	PASSED
CHECKED	KJN	ENGINEER OF BRIDGES AND STRUCTURES

OSC-A-6(M) 11/1/2002

Structure Number	Station	WGL (m)	ED (m)	TGL (m)	X (m)
4C072U150R024.7	39+700			10.345	6.60
4C072U150R024.9	40+105			11.385	7.04

Notes: **Space walkway brackets WF(A-N)102x4.55 and sign brackets WF(A-N)102x2.66 for efficiency and within limits shown:
f = 300 maximum, 100 minimum (End of sign to ϕ of nearest bracket)
g = 300 maximum, 100 minimum (End of walkway to ϕ of nearest bracket)
h = 1.85 m maximum (ϕ to ϕ sign and/or walkway support brackets, WF(A-N)102x2.66 or WF(A-N)102x4.55)
****If walkway bracket at safety chain location is behind sign, add angle to bracket.
For details of sign placement, sign/walkway brackets, truss and walkway gratings, grating splices and Section B-B, see Base Sheet OSC-A-7(M).
For details of handrail, handrail splice, safety chain and Details F and G, see Base Sheet OSC-A-8(M).

BRACKET TABLE

Sign Width		Number Brackets Required
Greater Than	Less Than or Equal To	
3.0	4.9	2
4.9	6.7	3
6.7	8.6	4
8.6	10.4	5
		6

**CANTILEVER SIGN STRUCTURES
ALUMINUM WALKWAY DETAILS
ALUMINUM TRUSS & STEEL POST**

ILLINOIS DEPARTMENT OF TRANSPORTATION
SIGNING PLAN
WAR MEMORIAL DR. STA. 39+700, 4C072U150R024.7
WAR MEMORIAL DR. STA. 40+105, 4C072U150R024.9

PEORIA CO., IL.

DATE: 11-11-04

M:\Proj\3573\Sign Structures\Contract 10\sp1003-TAcan-dim.dgn