

STATE OF ILLINOIS
DEPARTMENT OF TRANSPORTATION

ROUTE NO.	SECTION	COUNTY	TOTAL SHEETS	SHEET NO.
FAI74	*	PEORIA	1360	1325
STA.		TO STA.		
F.I.R.W.A. REGION		ILLINOIS	PROJECT	
		(72-71R-3	CONTRACT NO. 68200	

SPECIFICATIONS FOR STANDARD ALUMINUM GRATING

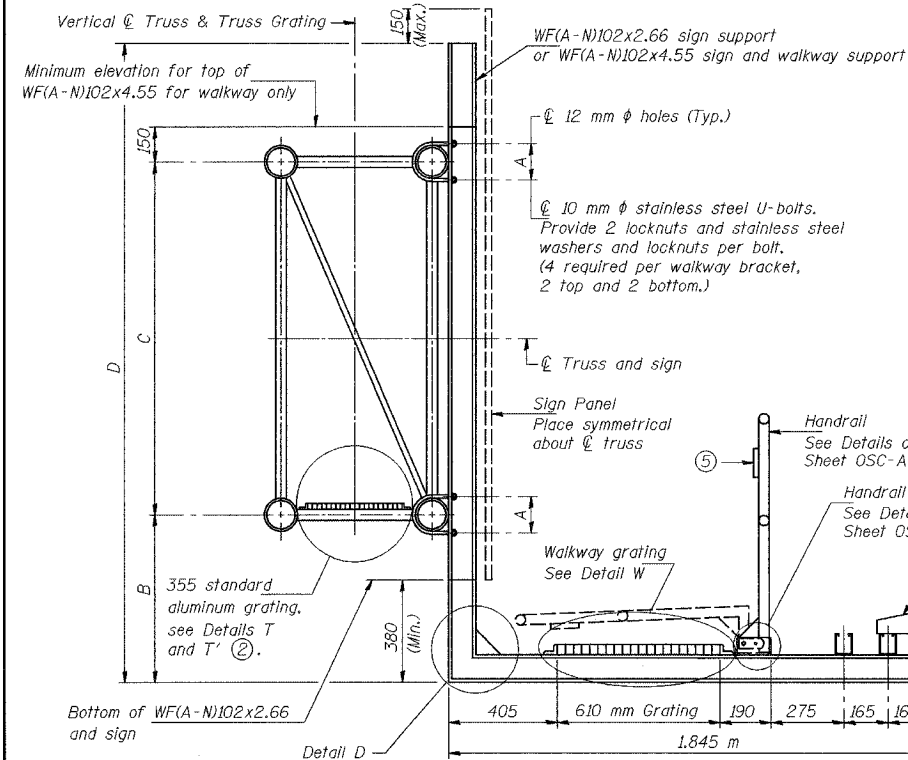
Main Bearing Bars (MBB) shall be 5 mm x 38 mm on 30 mm centers and conform to ASTM B211 Alloy 6061-T6.
Cross bars (CB) shall be 5 mm x 38 mm on 102 mm centers and conform to ASTM B221 Alloy 6063-T5 or 6061-T6.

OR

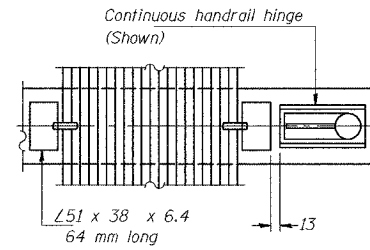
Aluminum Grating with modified "4" sections for main bearing bars shall meet the following requirements:

Main bars shall conform to ASTM B221 Alloy 6061-T6 and have a minimum section modulus equal to $1.16 \times 10^3 \text{ mm}^3$ per bar, a depth of 38 mm, spaced on 30 mm centers.

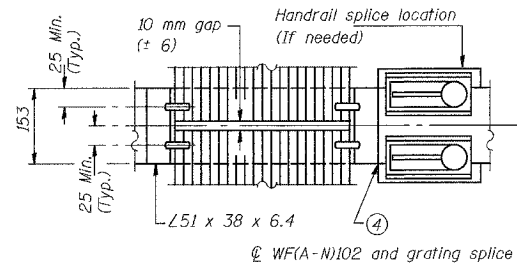
Cross bars shall conform to ASTM B221 Alloy 6063-T5 or T-42 and spaced on 100 mm centers.



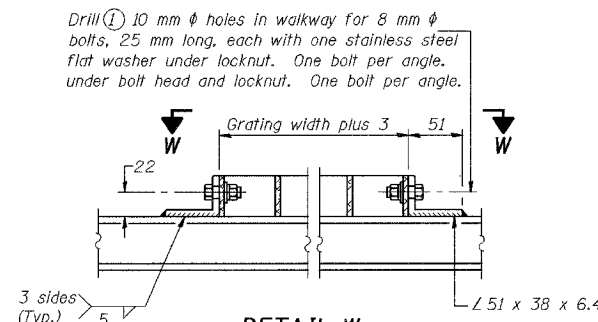
SECTION B-B



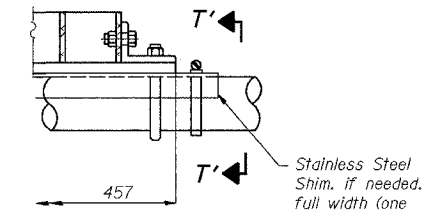
(CONTINUOUS WALKWAY GRATING)



SECTION W-W

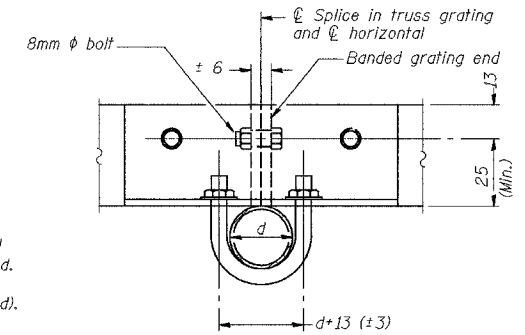


DETAIL W
(Walkway grating)

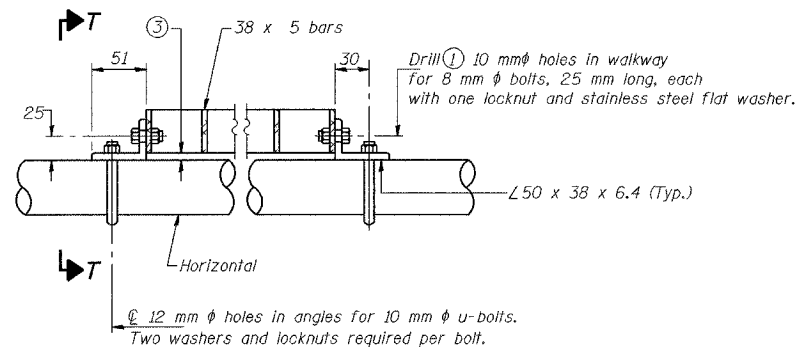


DETAIL T'

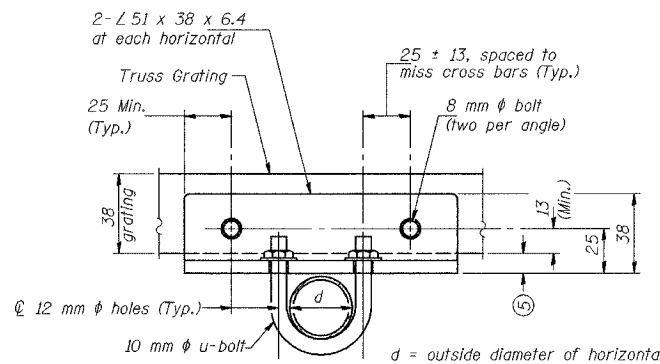
(Truss grating splice)
Details not shown same as Detail T.
Alternate materials may be used subject to the Engineer's review and approval.



SECTION T'-T'

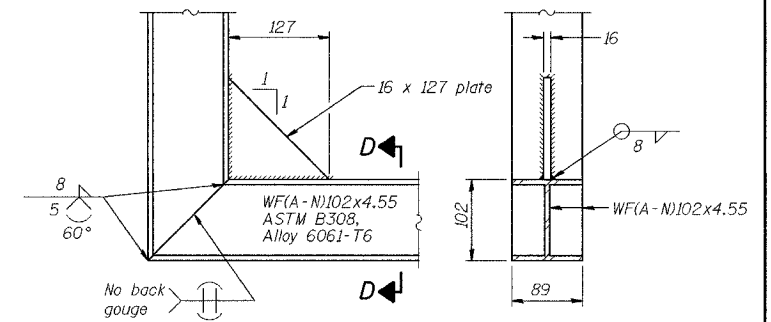


DETAIL T
(Truss grating at horizontal)



SECTION T-T'

Walkway Grating, Walkway Supports, Handrail and Lighting are not included. Information shown on this sheet shall be used for Truss Grating and Sign Supports only.



DETAIL D

SECTION D-D

(See Detail P, Base Sheet OSC-A-8(M).)

SIGNING SHEET 77 OF 83

**CANTILEVER SIGN STRUCTURES
WALKWAY DETAILS
ALUMINUM TRUSS & STEEL POST**

ILLINOIS DEPARTMENT OF TRANSPORTATION

SIGNING PLAN

WAR MEMORIAL DR. STA. 39+700, 4C072U150R024.7
WAR MEMORIAL DR. STA. 40+105, 4C072U150R024.9

PEORIA CO., IL.

DATE: II-II-04

M:\Proj\3573\Sign Structures\Contract 10\sp1003-7Acan-alm.dgn

NUMBER	REVISION	DATE

DESIGNED	RJW	EXAMINED	2004
CHECKED	KJN	PASSED	
DRAWN	RJW		
CHECKED	KJN		

OSC-A-7(M) 11/1/2002

- Drilling holes in grating may be done in shop or field, based on Contractor's preference and subject to accurate alignment.
- When truss grating must be spliced, use suggested detail or other methods subject to the Engineer's review and approval. Locate splice to avoid interference between cross bars and bolt locations.
- If Handrail Joint present, weld angle to WF(A-N)102 and 6 mm extension bars. (See Base Sheet OSC-A-8(M).)
- 3 mm x 13 mm x 50 mm welded to handrail posts to protect locations that contact grating.
- Tube to grating gap may vary from 0 to 13mm (Max.) to align walkway, allow for camber, etc. Continuous Truss Grating

Structure Number	Station	A (m)	B (m)	C (m)	D (m)
4C072U150R024.7	39+700	0.215	0.307	2.130	2.593
4C072U150R024.9	40+105	0.215	0.231	2.130	2.441