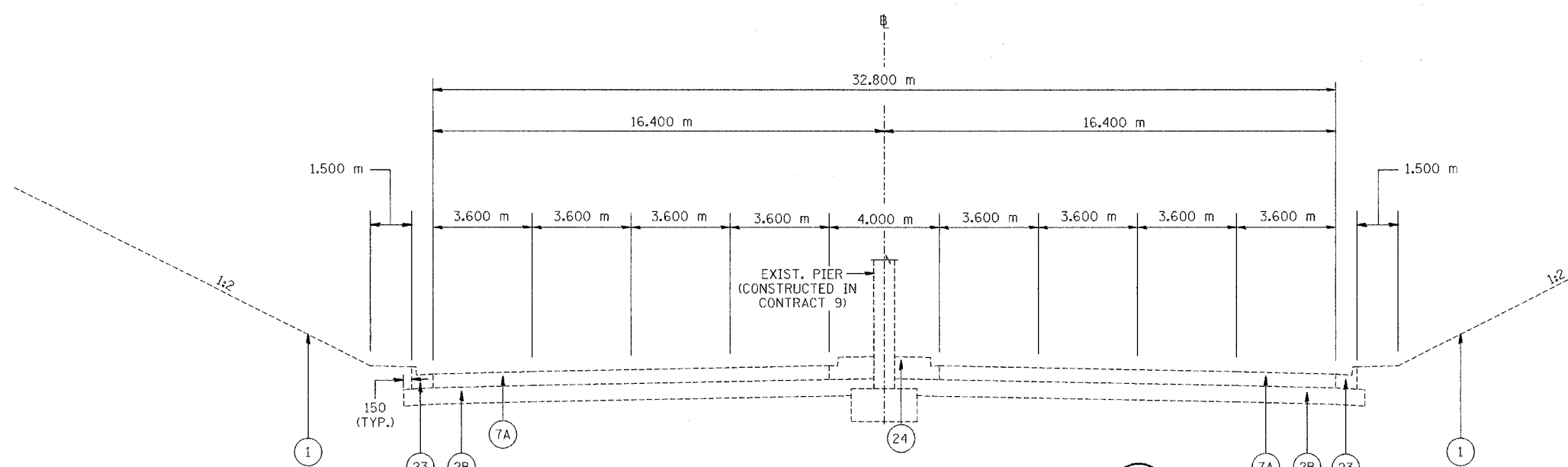


I:\projects\2004\116\116-111\116-111-111.dwg 12/20/04 11:11 AM

69201

F.A.I. RTE.	SECTION	COUNTY	TOTAL SHEETS	SHEET NO.
74	*	TAZEWELL	1366	49
STA.		TO STA.		
FED. ROAD DIST. NO.		ILLINOIS	FED. AID PROJECT	

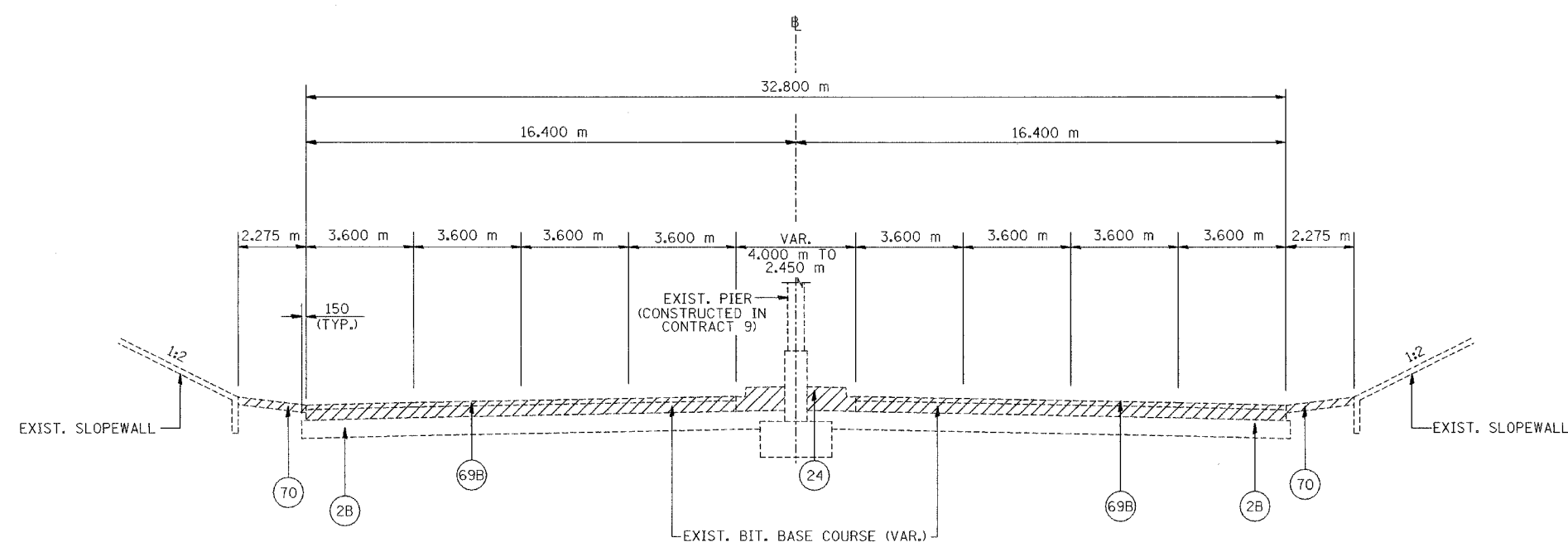
\*(90-IDR-2;90(I3,I4,I4-IDR-1



**TYPICAL SECTION A1**  
 STA. 2+382.480 TO STA. 2+402.933

(A1)

INDICATES ITEMS TO BE REMOVED



**TYPICAL SECTION B1**  
 STA. 2+402.933 TO STA. 2+412.933

(B1)

**LEGEND**

- |   |  |   |
|---|--|---|
| (1) EXISTING GROUND LINE                  | (10) EX PCC SIDEWALK                         | (69B) EX BITUMINOUS CONCRETE SURFACE COURSE, SUPERPAVE, MIX "D", N70. 38 mm |
| (2A) EX SUB-BASE GRANULAR MATERIAL 150 mm | (12) EX AGGREGATE SHOULDERS                  | (70) EX INCIDENTAL BITUMINOUS SURFACING 100 mm                              |
| (2B) EX SUB-BASE GRANULAR MATERIAL 300 mm | (13) EX BITUMINOUS SHOULDERS                 |   |
| (4) EX PCC BASE COURSE 230 mm             | (14) EX PCC SHOULDERS                        |   |
| (5) EX BITUMINOUS BASE COURSE             | (22) EX CONCRETE GUTTER                      |   |
| (6A) EX BITUMINOUS RESURFACING 75 mm      | (23) EX COMBINATION CONCRETE CURB AND GUTTER |   |
| (7A) EX PCC PAVEMENT 250 mm               | (24) EX CONCRETE MEDIAN                      |   |

NOTES: ALL DIMENSIONS ARE IN MILLIMETERS (mm) UNLESS OTHERWISE STATED.

REVISIONS	
NAME	DATE



ILLINOIS DEPARTMENT OF TRANSPORTATION  
 FAI ROUTE 74 (I-74)  
 EXISTING TYPICAL SECTIONS  
 ILL. 116 - U.S. 150 - MAIN ST.  
 SECTIONS A1 & B1  
 DRAWN BY NIL  
 CHECKED BY JJM  
 DATE 12-20-04