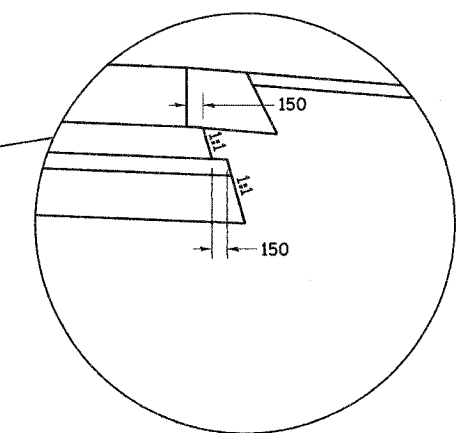
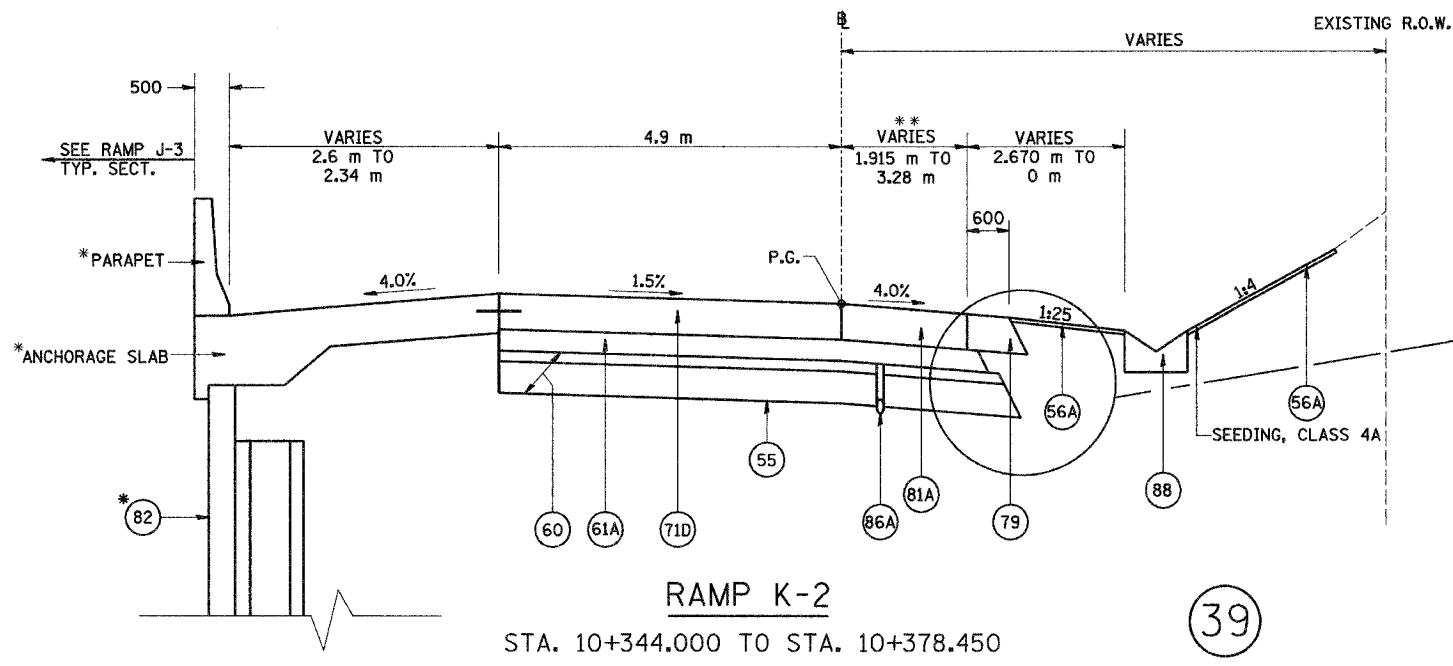


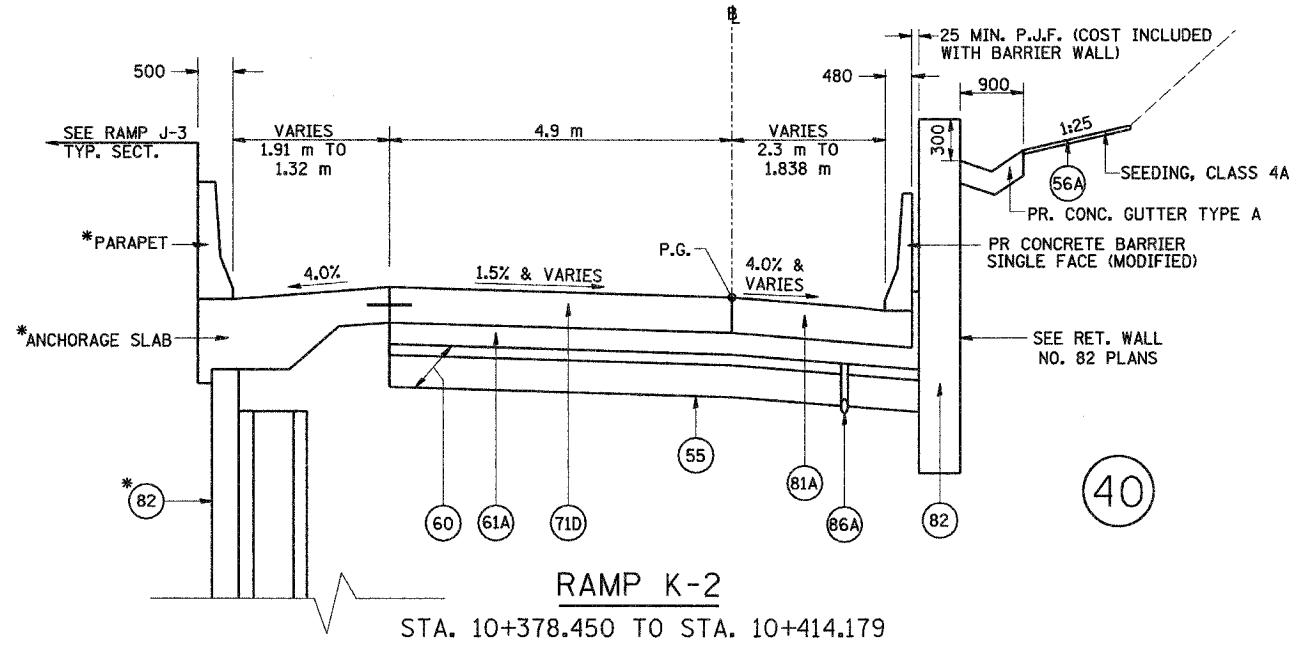
F.A.I. RTE.	SECTION	COUNTY	TOTAL SHEETS	SHEET NO.
74	*	TAZEWELL	1366	77
STA.		TO STA.		
FED. ROAD DIST. NO.		ILLINOIS FED. AID PROJECT		
* (90-IBR-2; 90(3,14,14-DR-1				



RAMP K-2
STA. 10+344.000 TO STA. 10+378.450

39

* SEE RET. WALL NO. 81 PLANS



RAMP K-2
STA. 10+378.450 TO STA. 10+414.179

40

LEGEND			
55	PR GEOTECHNICAL FABRIC FOR GROUND STABILIZATION	81A	PR PORTLAND CEMENT CONCRETE SHOULDERS 250 MM
56A	PR FURNISH AND PLACE TOPSOIL, 100 MM	81B	PR PORTLAND CEMENT CONCRETE SHOULDERS, 290 MM
60	PR AGGREGATE SUB-BASE, 300 MM	82	PR RETAINING WALL (SEE WALL PLANS)
61A	PR BITUMINOUS CONCRETE BINDER COURSE, SUPERPAVE, IL-19.0L (LOW ESAL), 100MM	86A	PR PIPE UNDERDRAINS, 100 MM
61B	PR BITUMINOUS CONCRETE BINDER COURSE, SUPERPAVE, IL-19.0L (LOW ESAL), 150MM	86B	PR PIPE UNDERDRAINS, 150 MM
71D	PR PORTLAND CEMENT CONCRETE PAVEMENT 250MM (JOINTED)	88	PR CONCRETE GUTTER, TYPE A (MODIFIED)
75	PR CONTINUOUSLY REINFORCED PORTLAND CEMENT CONCRETE PAVEMENT, 290 MM	89B	PR COMB. CONCRETE C&G, TYPE B-15.60
79	PR AGGREGATE SHOULDERS, TYPE B	89K	PR COMB. CONCRETE C&G, TYPE B-15.45
		86A	PR LONGITUDINAL CONSTRUCTION JOINT (TYPICAL)
		86B	PR SAWED LONGITUDINAL JOINT (TYPICAL)

NOTES: SHOULDERS ADJACENT TO THE HIGH SIDE OF SUPERELEVATED PAVEMENT SHALL BE 4% OR 8% MINUS THE RATE OF SUPER, WHICHEVER IS LESS. ADJACENT TO THE LOW SIDE OF SUPERELEVATED PAVEMENT SHOULDERS SHALL HAVE A SLOPE OF 4% OR THE RATE OF SUPER, WHICHEVER IS GREATER.

ALL DIMENSIONS ARE IN MILLIMETERS (mm) UNLESS OTHERWISE STATED.

60 IS SHOWN IN TWO LAYERS TO DENOTE THE TWO GRADATIONS THAT MAKE UP THIS PAY ITEM.

REVISIONS	
NAME	DATE

ILLINOIS DEPARTMENT OF TRANSPORTATION
FAI ROUTE 74 (I-74)
PROPOSED TYPICAL SECTIONS
RAMP K-2
NUMBERS 39 & 40

DATE 12/20/04

DRAWN BY DER
CHECKED BY MLB



D:\projects\74002\12121\2004\7.17.07.rvt