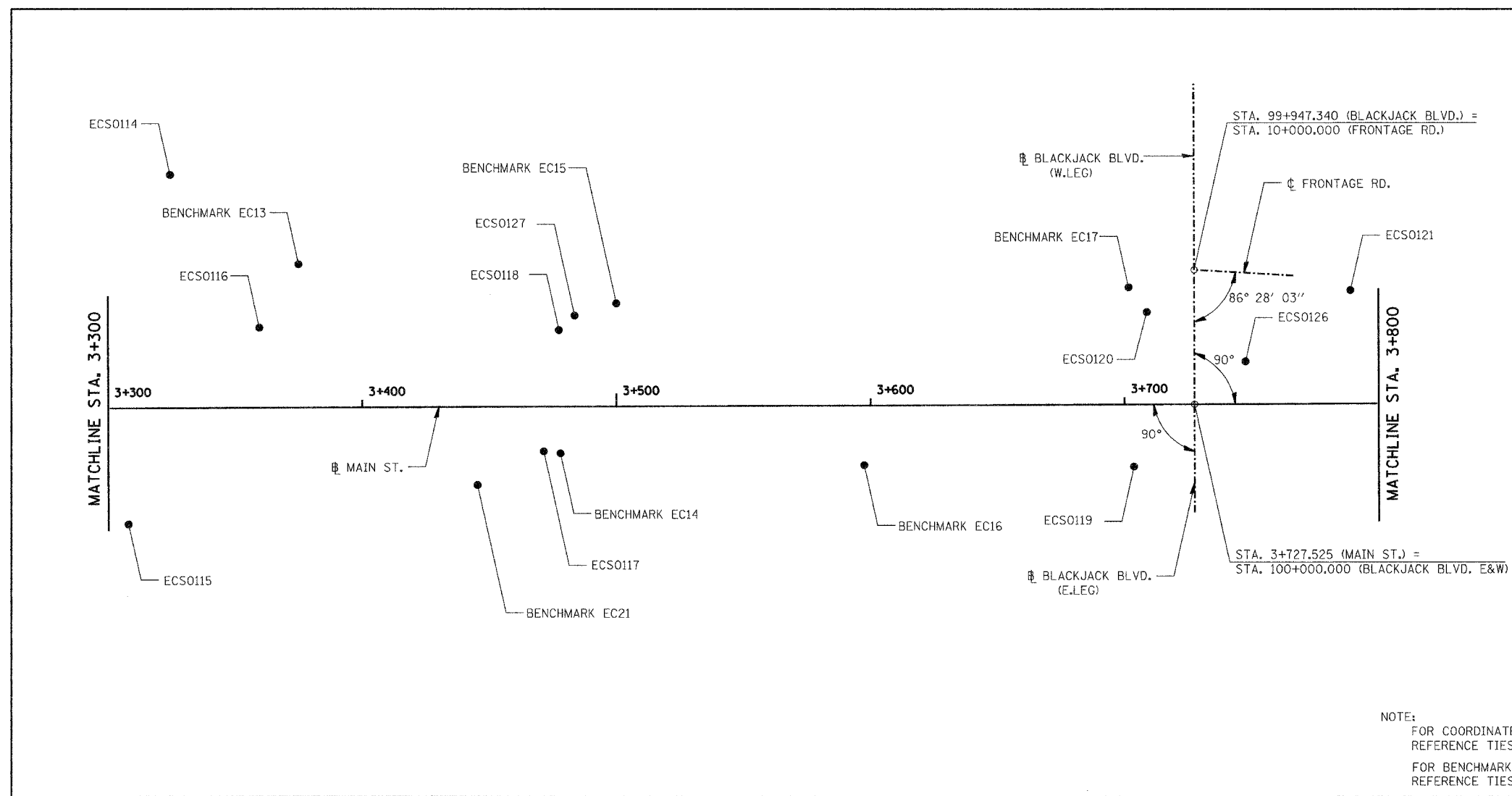
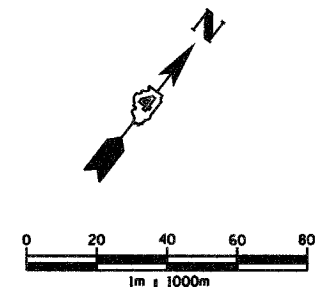
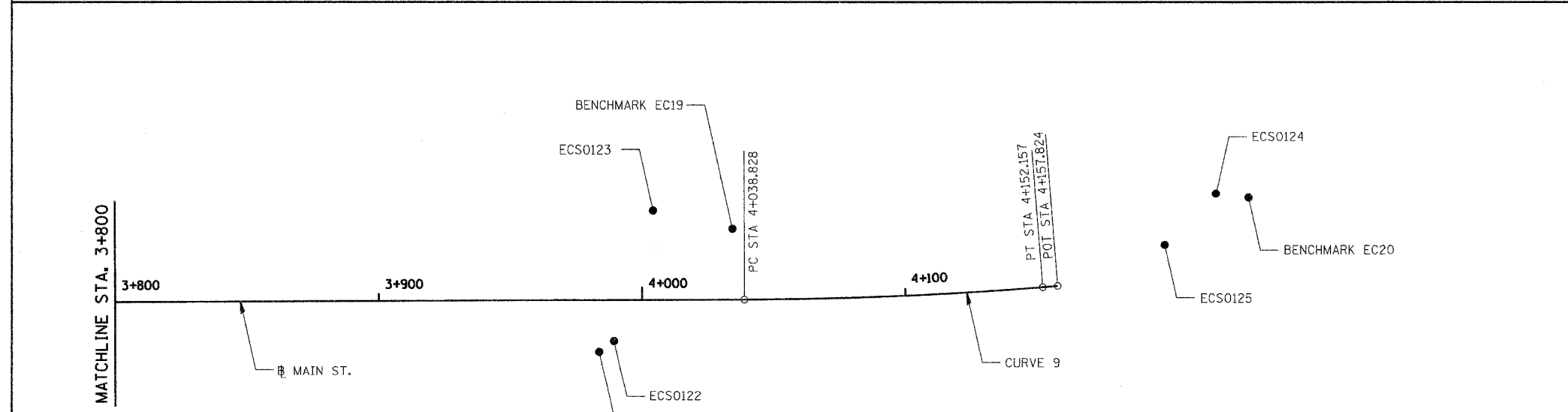


F.A.I. RTE.	SECTION	COUNTY	TOTAL SHEETS	SHEET NO.
74	*	TAZEWELL	1366	121
STA. 3+300.000		TO STA. 4+157.824		
FED. ROAD DIST. NO.		ILLINOIS FED. AID PROJECT		

\*(90-111R-2;90(13,14,14-11R-1



NOTE:  
 FOR COORDINATES OF "ECS" POINTS, SEE REFERENCE TIES & BENCHMARK SHEET  
 FOR BENCHMARK INFORMATION, SEE REFERENCE TIES & BENCHMARK SHEET



PROP. CURVE 1  
 P.I. STA = 4+095.519  
     N 445,625.688  
     E 751,455.737  
 $\Delta = 4^\circ 19' 44''$  (LT)  
 R = 1,500.000 m  
 T = 56.691 m  
 L = 113.329 m  
 E = 1.071 m  
 SE = MATCH EXISTING  
 P.C. STA = 4+038.828  
     N 445,590.605  
     E 751,411.205  
 P.T. STA = 4+152.157  
     N 445,664.032  
     E 751,497.494

P.O.T. STA. 4+157.824  
     N 445,667.865  
     E 751,501.668

REVISIONS		ILLINOIS DEPARTMENT OF TRANSPORTATION
NAME	DATE	
		SCHEMATIC DRAWING ILL. 116 - U.S. 150 - MAIN ST. STA. 3+300 TO STA. 4+157.824



DRAWN BY SRS  
 CHECKED BY JUM  
 DATE 12-20-04

D:\base\chicago\101103-56.dwg 12/20/2004 7:46:07 AM