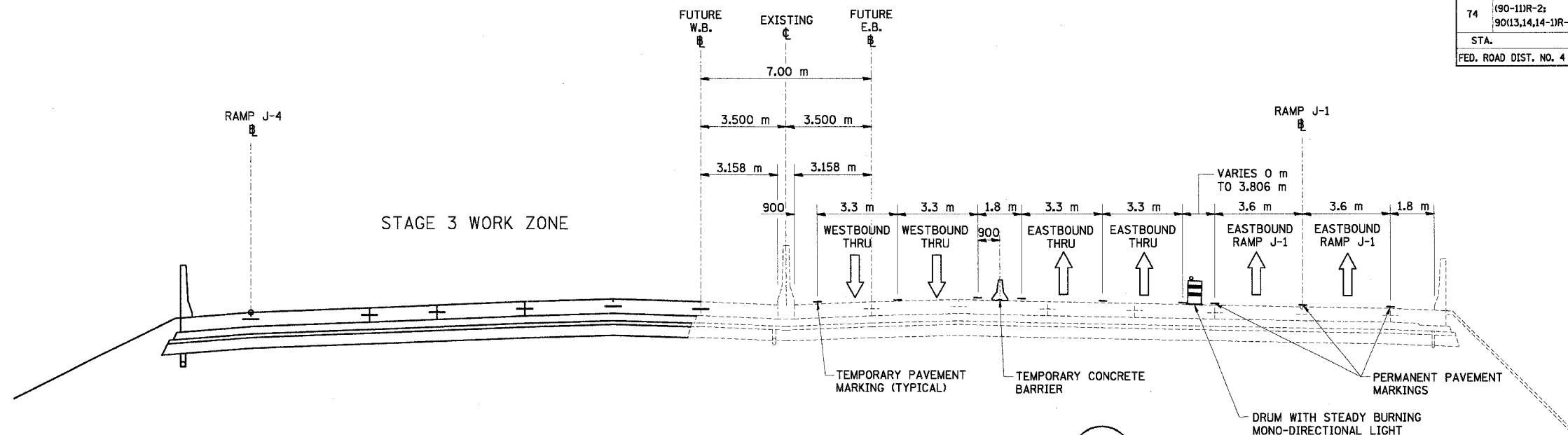
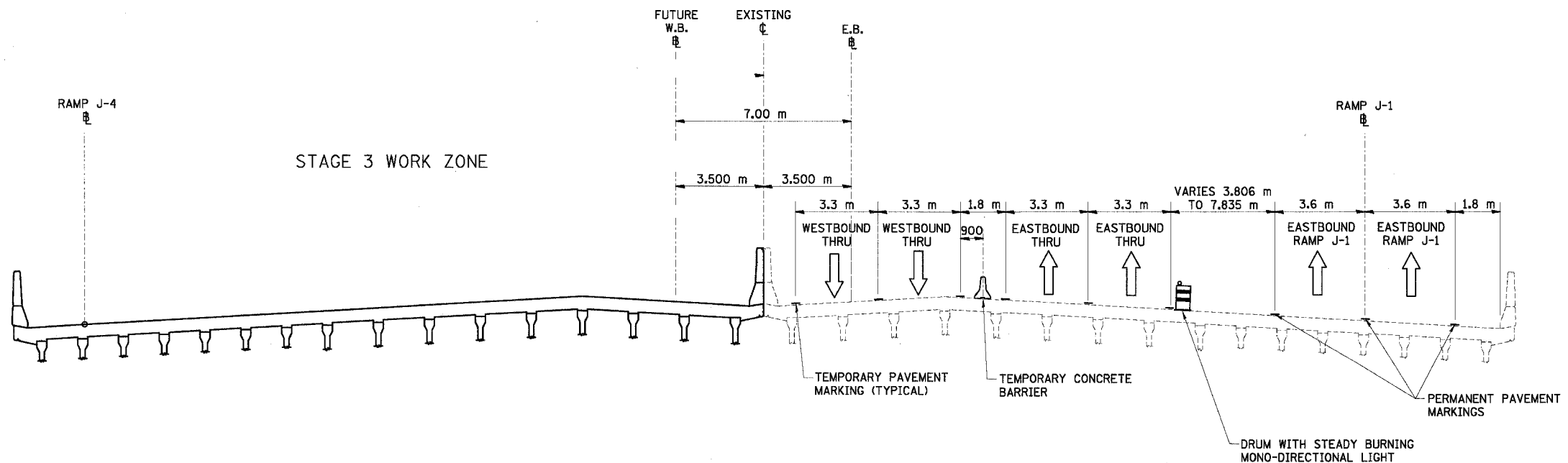


F.A.I. RTE.	SECTION	COUNTY	TOTAL SHEETS	SHEET NO.
74	(90-11R-2; 90(13,14,14-1)R-1	TAZEWELL	1366	138
STA. _____ TO STA. _____		FED. ROAD DIST. NO. 4 ILLINOIS FED. AID PROJECT		



I-74 MOT TYPICAL SECTION NO. 3
STA. 152+574.309 TO STA. 152+647.110

3



I-74 MOT TYPICAL SECTION NO. 4
STA. 152+647.110 TO STA. 152+723.600
I-74 AND RAMP J-1 OVER ALTORFER LANE AND TP&W R.R.

4

REVISIONS	
NAME	DATE

ILLINOIS DEPARTMENT OF TRANSPORTATION
 F.A.I. ROUTE 74 (I-74)
 MAINTENANCE OF TRAFFIC
 STAGE 3A
 I-74 TYPICAL SECTIONS 3 & 4
 DRAWN BY KMO
 CHECKED BY RTG
 DATE 12/20/2004

