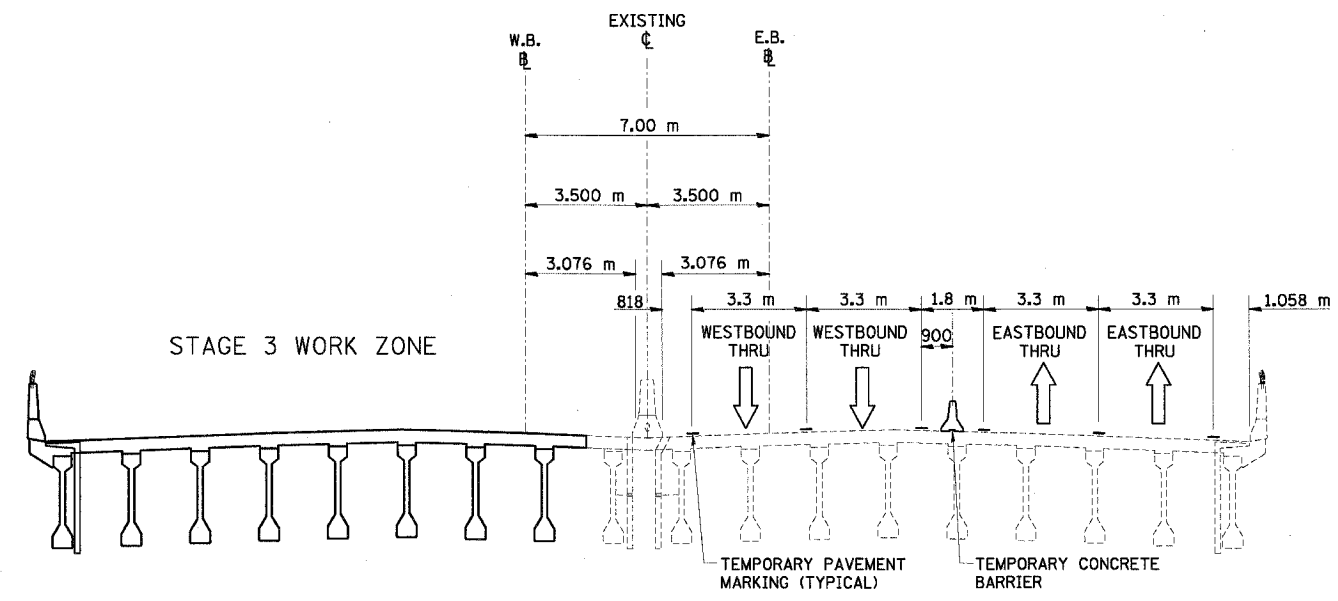
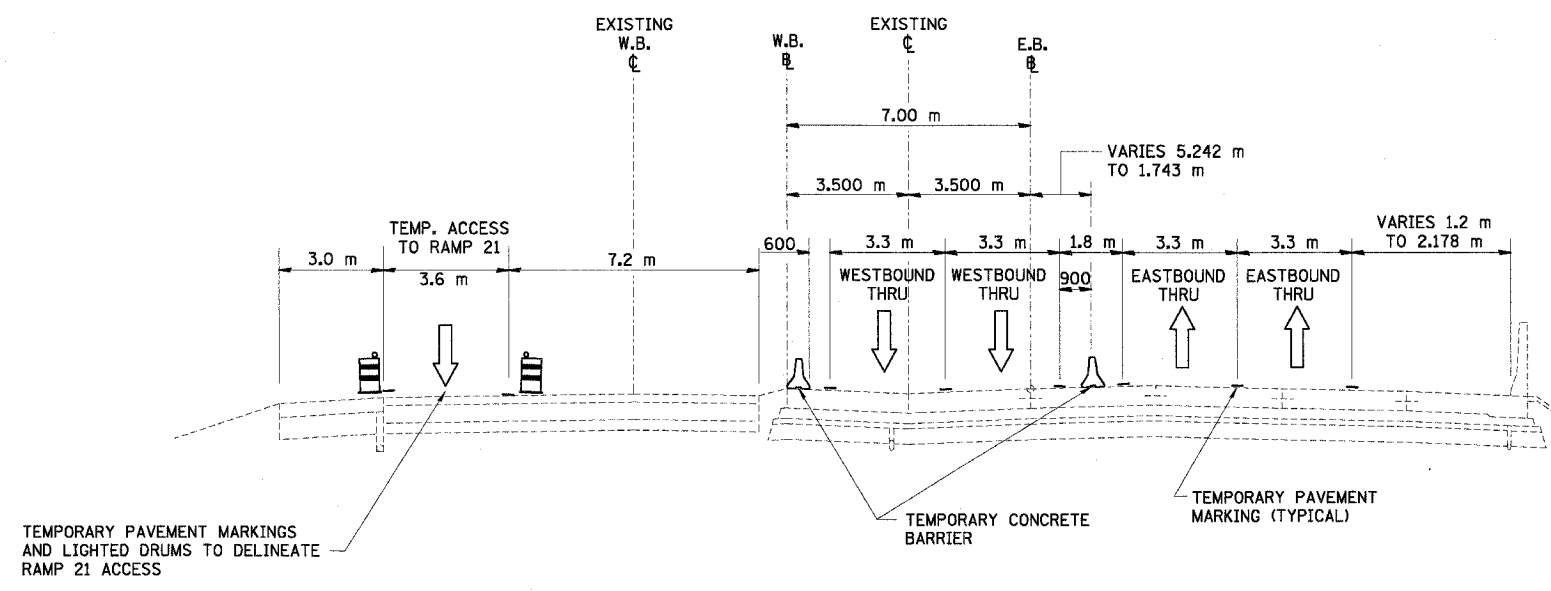


88201				
F.A.I. RTE.	SECTION	COUNTY	TOTAL SHEETS	SHEET NO.
74	(90-11)R-2; 90(13,14,14-1)R-1	TAZEWELL	1366	141
STA.		TO STA.		
FED. ROAD DIST. NO. 4		ILLINOIS FED. AID PROJECT		



I-74 MOT TYPICAL SECTION NO. 9
 STA. 153+012.640 TO STA. 153+089.640
 I-74 OVER NORTH MAIN STREET (US 150, IL116)

9



I-74 MOT TYPICAL SECTION NO. 10
 STA. 153+089.640 TO STA. 153+202.863
 WESTBOUND I-74 GAPPED BETWEEN STATION 153+168 TO 153+470

10

REVISIONS	
NAME	DATE

ILLINOIS DEPARTMENT OF TRANSPORTATION
 F.A.I. ROUTE 74 (I-74)
 MAINTENANCE OF TRAFFIC
 STAGE 3A
 I-74 TYPICAL SECTIONS 9 & 10
 DRAWN BY KMO
 CHECKED BY RTG
 DATE 12/20/2004

