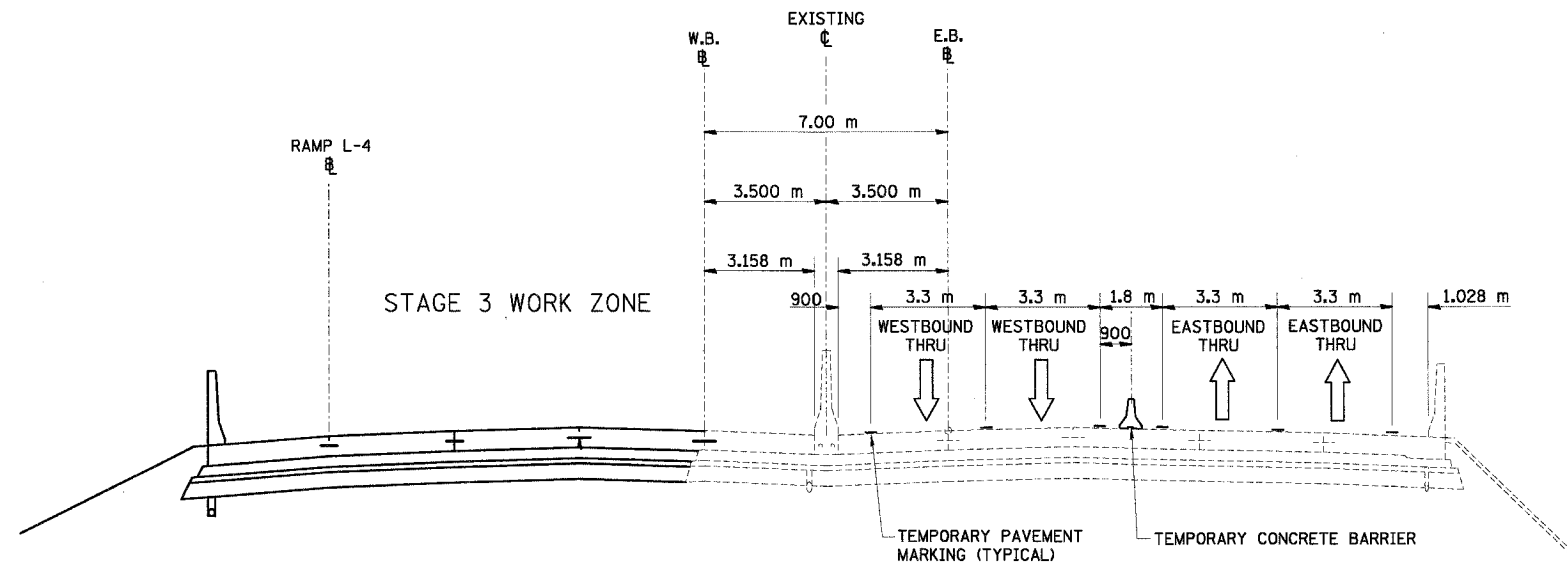
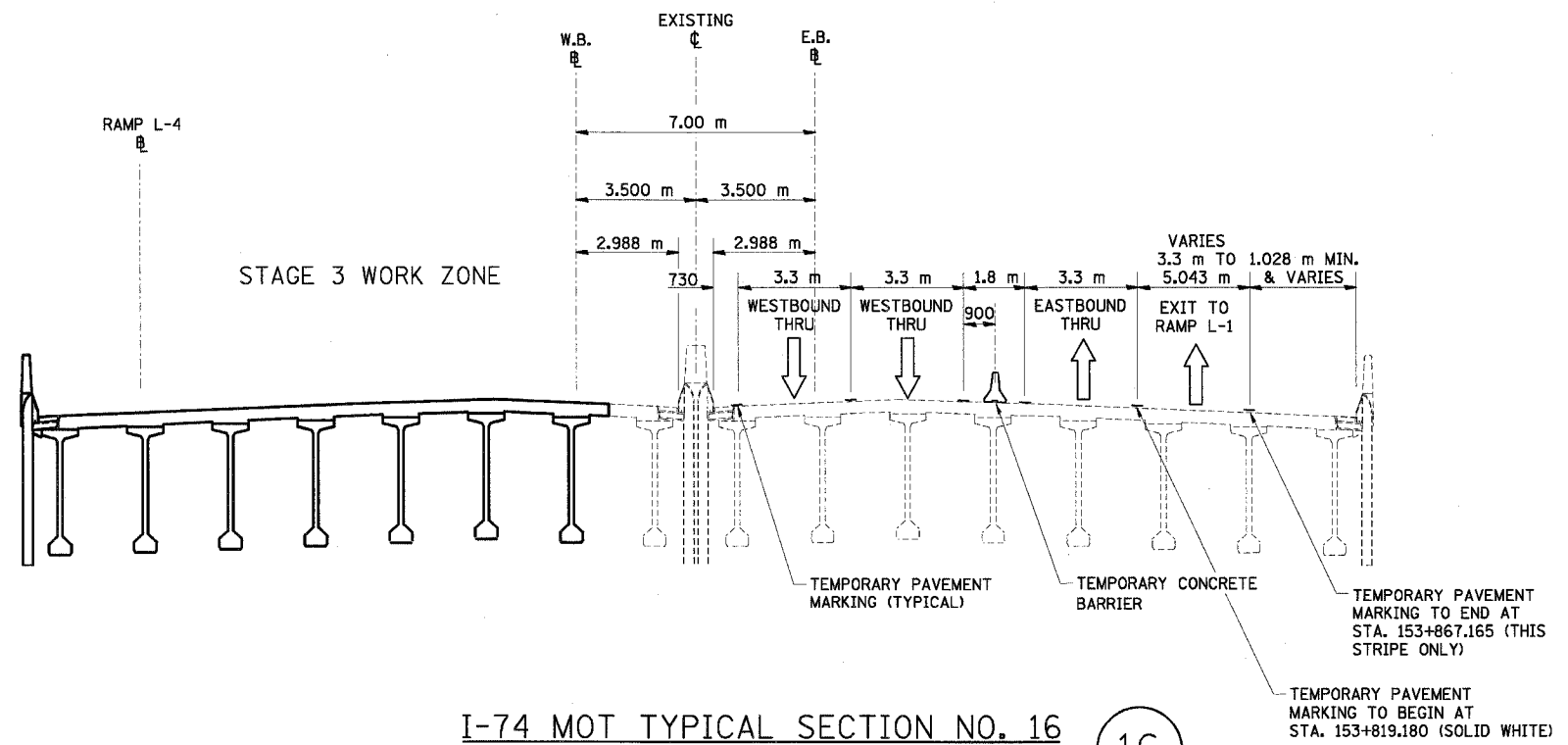


F.A.I. RTE.	SECTION	COUNTY	TOTAL SHEETS	SHEET NO.
74	(90-11)R-2; 90(13,14,14-1)R-1	TAZEWELL	1366	144
STA.		TO STA.		
FED. ROAD DIST. NO. 4		ILLINOIS FED. AID PROJECT		



I-74 MOT TYPICAL SECTION NO. 15  
STA. 153+750.460 TO STA. 153+819.180

15



I-74 MOT TYPICAL SECTION NO. 16  
STA. 153+819.180 TO STA. 153+892.180

16

I-74 & RAMP L-4 OVER TAYLOR ST AND WASHINGTON ST (IL 8)

REVISIONS		ILLINOIS DEPARTMENT OF TRANSPORTATION F.A.I. ROUTE 74 (I-74) MAINTENANCE OF TRAFFIC STAGE 3A I-74 TYPICAL SECTIONS 15 & 16 DRAWN BY KMO CHECKED BY RTG
NAME	DATE	



DATE 12/20/2004