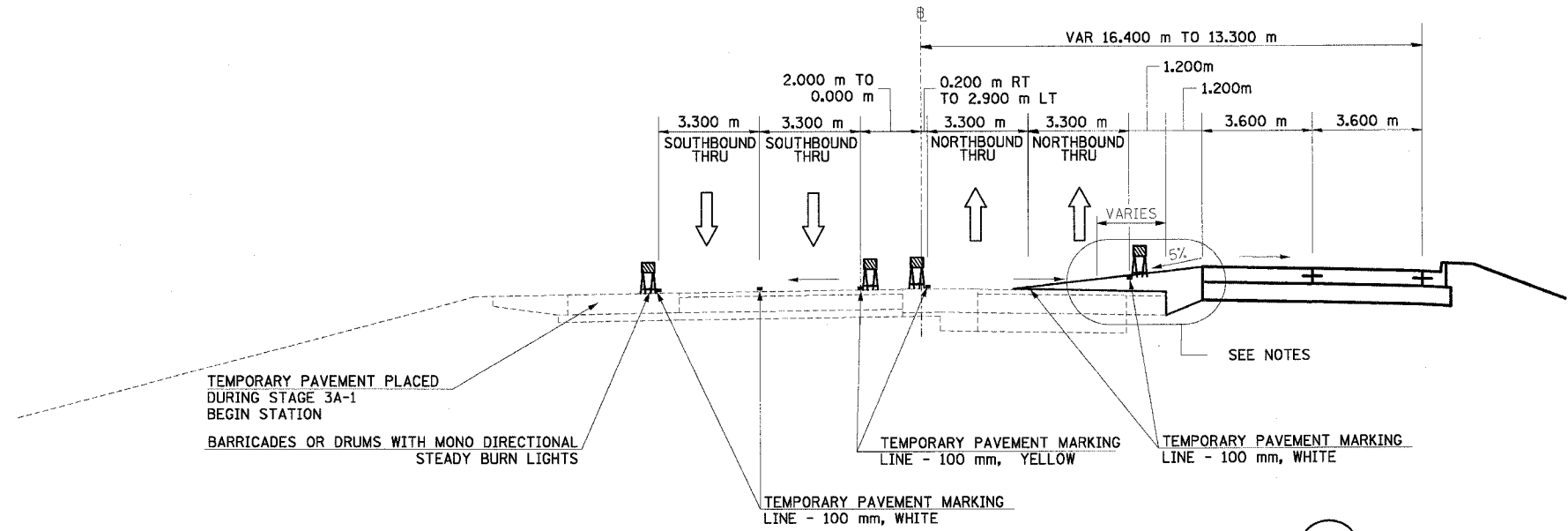
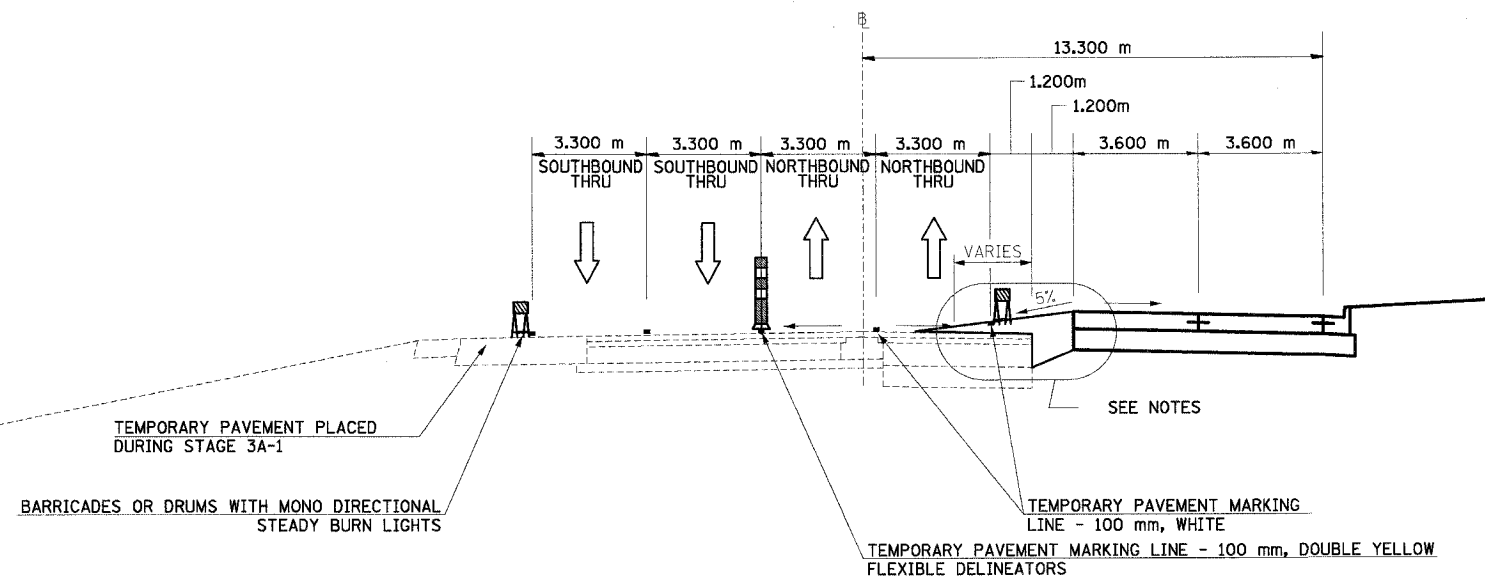


F.A.I. RTE.	SECTION	COUNTY	TOTAL SHEETS	SHEET NO.
74	*	TAZEWELL	1366	155
STA.		TO STA.		
FED. ROAD DIST. NO.		ILLINOIS FED. AID PROJECT		

\*(90-11)R-2;90(13,14,14-1)R-1



**NORTH MAIN ST MOT TYPICAL SECTION NO. 7A** (7A)  
 STA. 2+579.299 TO STA. 2+703.299



**NORTH MAIN ST MOT TYPICAL SECTION NO. 8A** (8A)  
 STA. 2+703.299 TO STA. 2+800.000  
 END OF COMPLETE PAVEMENT RECONSTRUCTION

- NOTES:
1. PROPOSED TEMPORARY PAVEMENT IS BELOW EXISTING PAVEMENT PRIOR TO STA 2+610
  2. VERTICAL DIFFERENTIAL RANGES BETWEEN 30 TO 450 mm FOR 7A AND BETWEEN 0.125 TO 0.345 mm FOR 8A, DO NOT MILL EXISTING SB PAVEMENT.
  3. TEMPORARY PAVEMENT PLACED IMMEDIATELY AFTER PROPOSED PAVEMENT IS CONSTRUCTED, USE STANDARD 701606.
  4. TEMPORARY GAP IN PROPOSED CURB REQUIRED FROM STA 2+585 TO STA 2+600 TO ALLOW ACCESS FROM RAMP 21 TO EASTBOUND NORTH MAIN STREET

REVISIONS	
NAME	DATE

ILLINOIS DEPARTMENT OF TRANSPORTATION  
 FAI ROUTE 74 (I-74)  
 MAINTENANCE OF TRAFFIC  
 STAGE 3A-2  
 ILL. 116-U.S. 150-NORTH MAIN ST.  
 TYPICAL SECTIONS 7A & 8A  
 DATE: 12/20/2004  
 DRAWN BY: MRF  
 CHECKED BY: RTG

