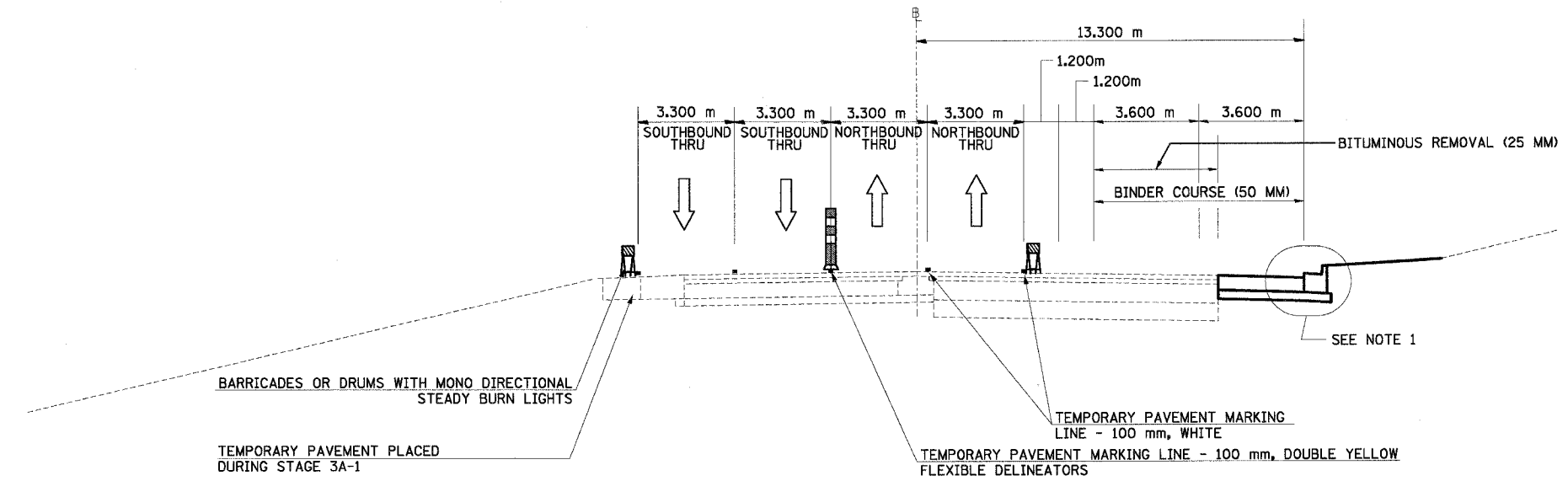
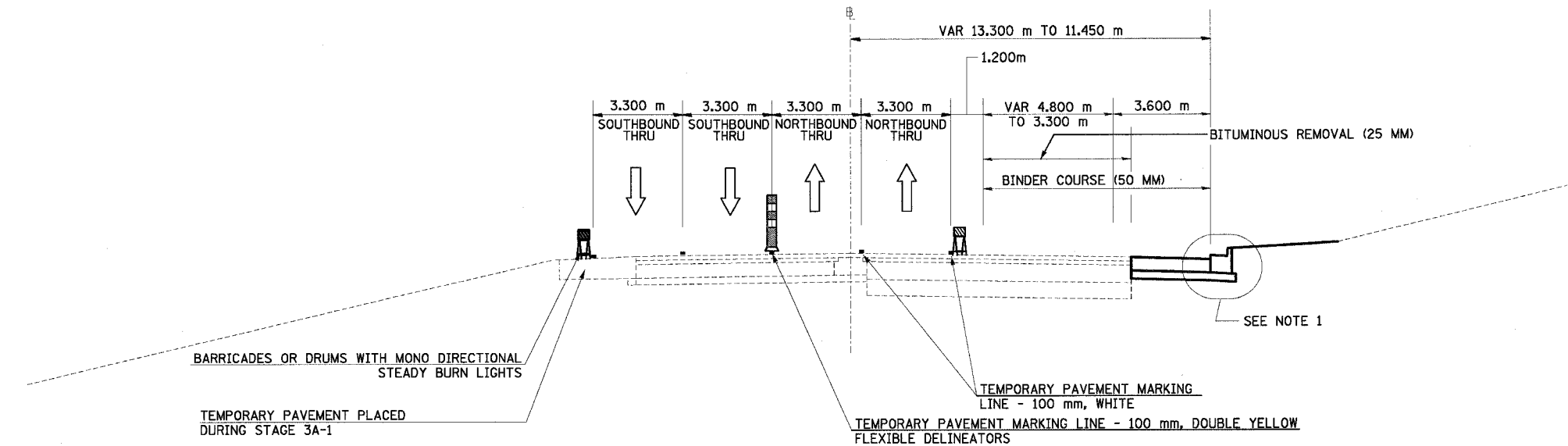


F.A. RTE.	SECTION	COUNTY	TOTAL SHEETS	SHEET NO.
74	*	TAZEWELL	1366	156
STA.		TO STA.		
FED. ROAD DIST. NO.		ILLINOIS FED. AID PROJECT		

\*(90-11)R-2;90(13,14,14-1)R-1



**NORTH MAIN ST MOT TYPICAL SECTION NO. 9A** (9A)  
 STA. 2+800.000 TO STA. 3+023.295  
 BEGIN RESURFACE AND WIDENING



**NORTH MAIN ST MOT TYPICAL SECTION NO. 10A** (10A)  
 STA. 3+023.295 TO STA. 3+103.295

- NOTES: 1. USE DISTRICT 4 STANDARD 602401-D4, TEMPORARY INLET DRAINAGE TREATMENT  
 2. BINDER COURSE IS TO BE PLACED IN WORKZONE AREAS AS SHOWN

REVISIONS	
NAME	DATE

ILLINOIS DEPARTMENT OF TRANSPORTATION  
 FAI ROUTE 74 (I-74)  
 MAINTENANCE OF TRAFFIC  
 STAGE 3A-2  
 ILL. 116-U.S. 150-NORTH MAIN ST.  
 TYPICAL SECTIONS 9A & 10A  
 DATE 12/20/2004  
 DRAWN BY MRF  
 CHECKED BY RTG

